

ADDENDUM NO. 1

TO THE PLANS AND SPECIFICATIONS FOR:

LVES Build Restrooms at Champion's Terrace University Special Events

Prepared by

Brigham Young University
Planning & Construction Dept.
240 Brewster Physical Plant
Provo, Utah 84602
2 April 2024

This Addendum issued 2 April 2024 is for all persons preparing bids and as such shall be made a part of the contract documents. This Addendum consists of this cover sheet and 5 pages. In case of any conflict between the drawings, specifications, and this Addendum, this Addendum shall govern. All changes, corrections, deletions and/or additions to the initial bidding documents shall be included in the Bidder's proposal. Receipt of this Addendum shall be acknowledged on the Bid proposal forms.

Approved by:



Anthony Burdette (Apr 2, 2024 13:56 MDT)

Anthony R. Burdette, Director of Construction

Apr 2, 2024

Date

**BRIGHAM YOUNG UNIVERSITY
LVES – BUILD RESTROOMS AT CHAMPIONS TERRACE
Work Order No. N4639**

**ADDENDUM NO. 1
02 APRIL 2024**

OWNER/ARCHITECT

Brigham Young University
Keith Martin, 240 BRWB, (801) 623-8894

CHANGES TO DRAWINGS

- 1. Sheet A2.1**
 - a. ADD Structural Redlines (see attached).

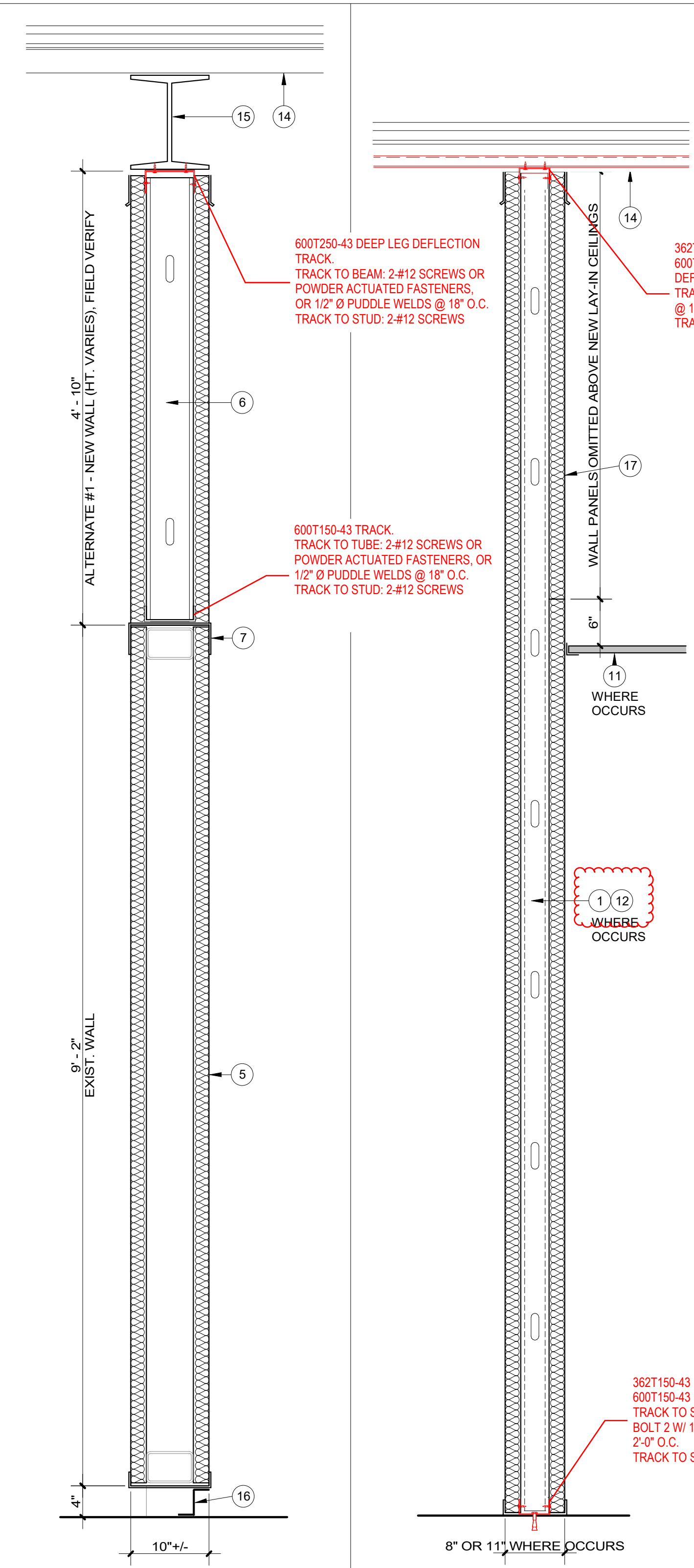
- 2. Sheet A3.0**
 - a. ADD Door Schedule & Hardware Schedule (see attached).

CHANGES TO SPECIFICATIONS

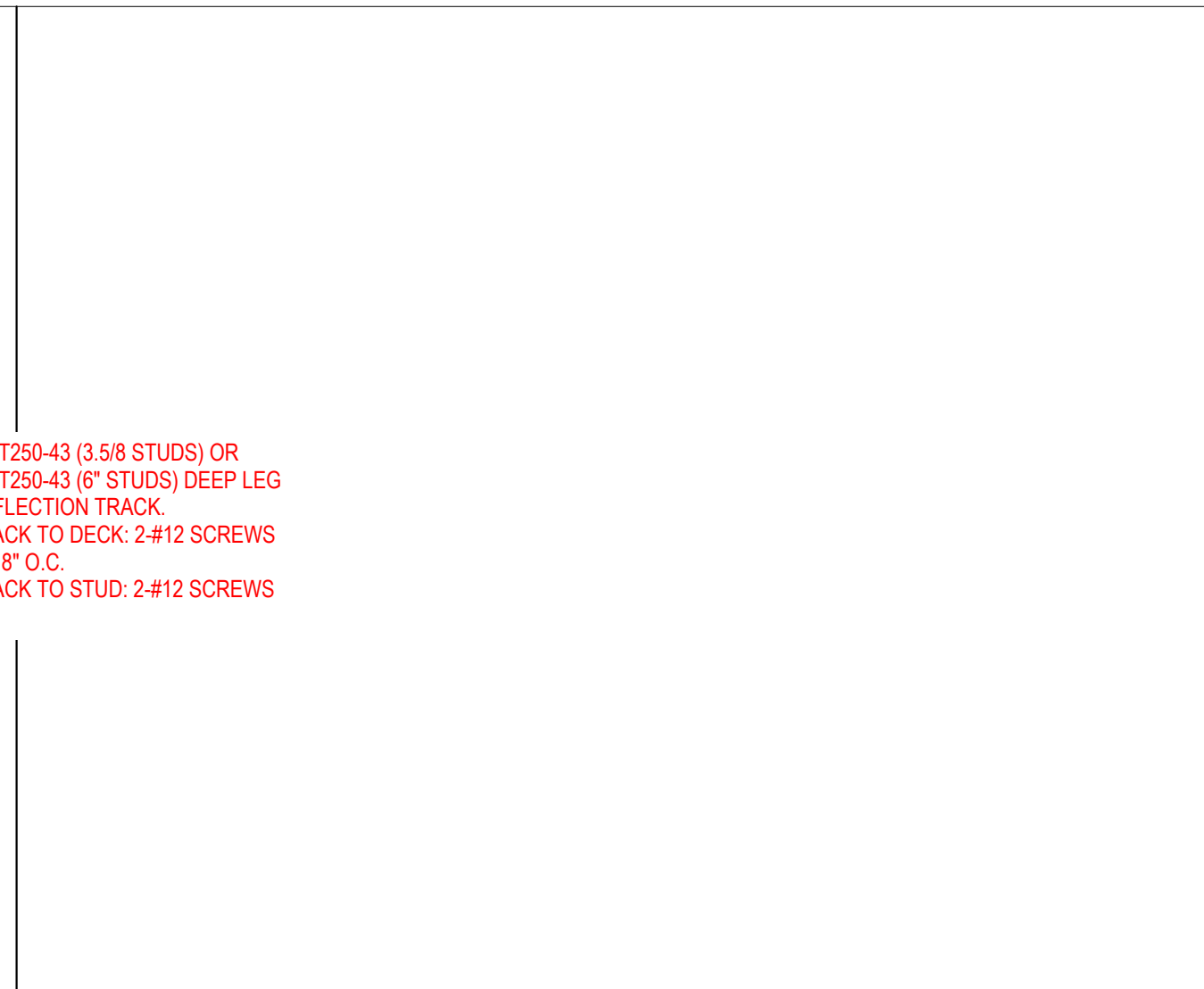
- 1. Kingspan insulated panel system contact:**
 - a. Patrick Kraber
Regional Sales Manager
Insulated Panel Systems
BENCHMARK Architectural Systems

M: 720.695.9554 / T: 209.531.9091
www.kingspanpanels.com

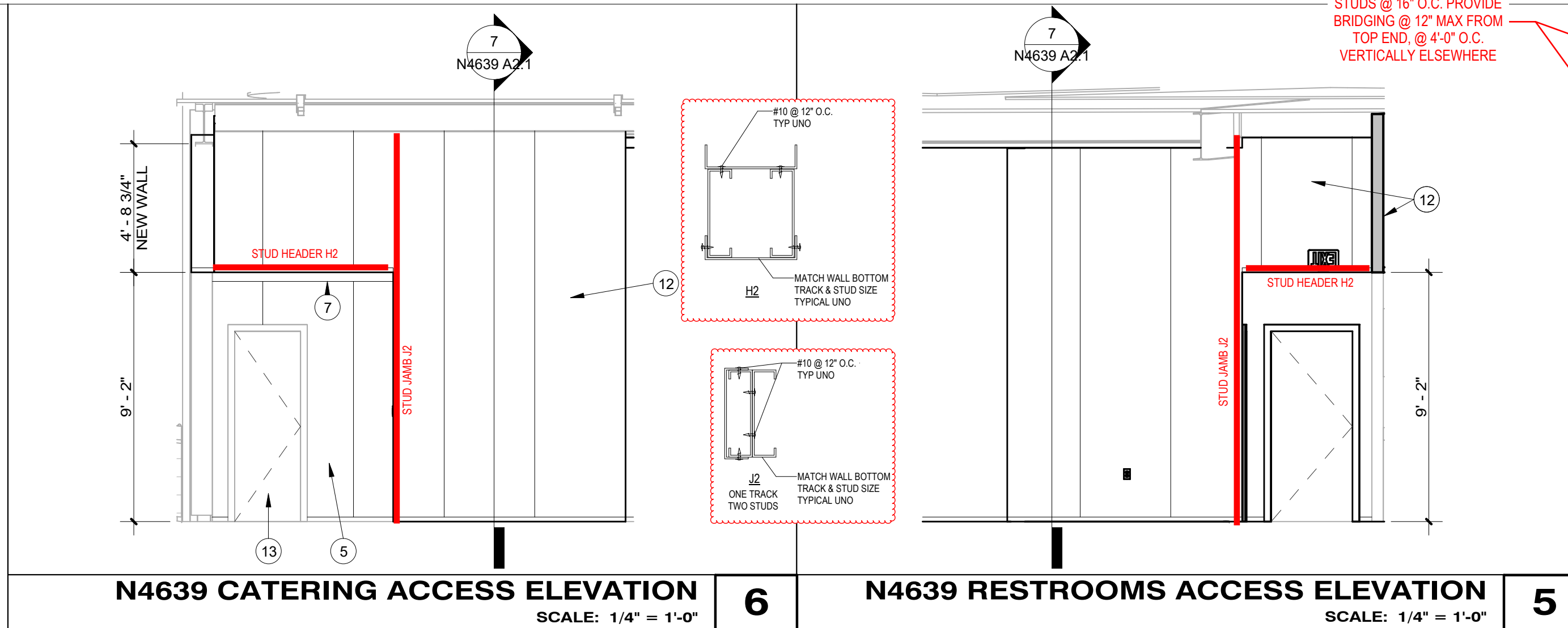
3/27/2024 6:11:08 PM C:\Users\kemp2\Documents\LVES_kam297DL6W.rvt



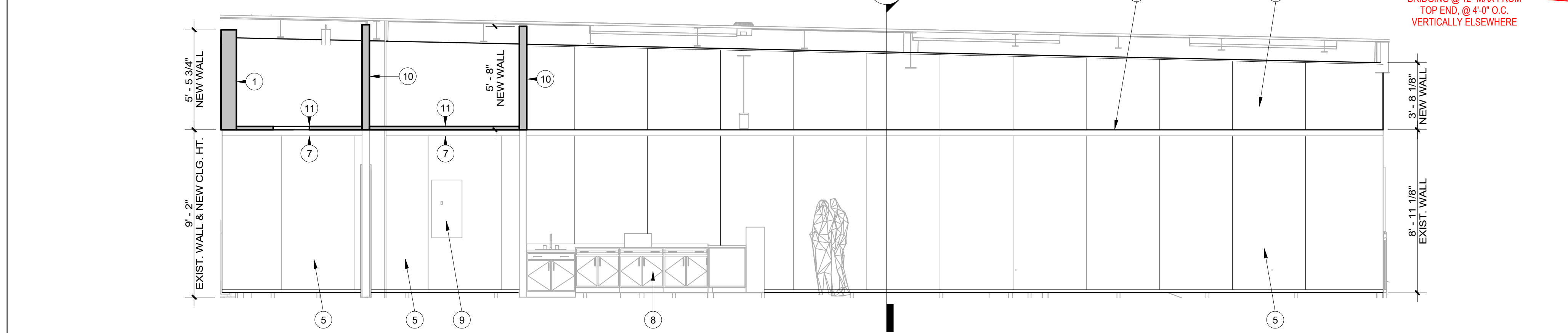
N4639 WALL SECT. 8 SCALE: 1" = 1'-0"
N4639 WALL SECT. 7 SCALE: 1" = 1'-0"



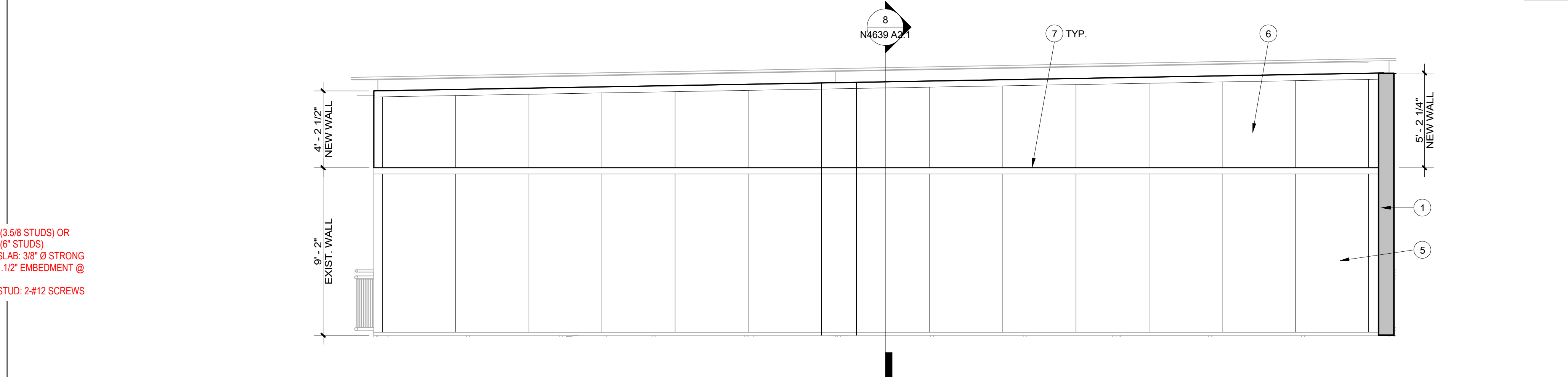
N4639 CATERING ACCESS ELEVATION 6 SCALE: 1/4" = 1'-0"



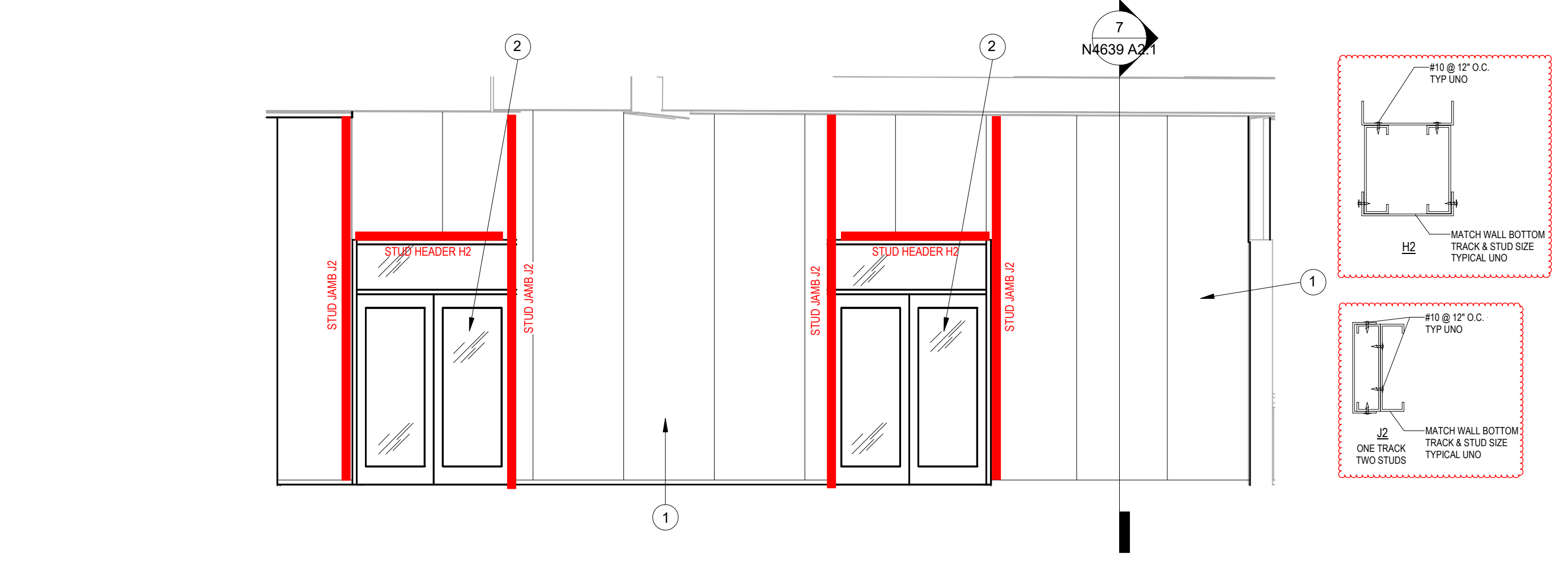
N4639 RESTROOMS ACCESS ELEVATION 5 SCALE: 1/4" = 1'-0"



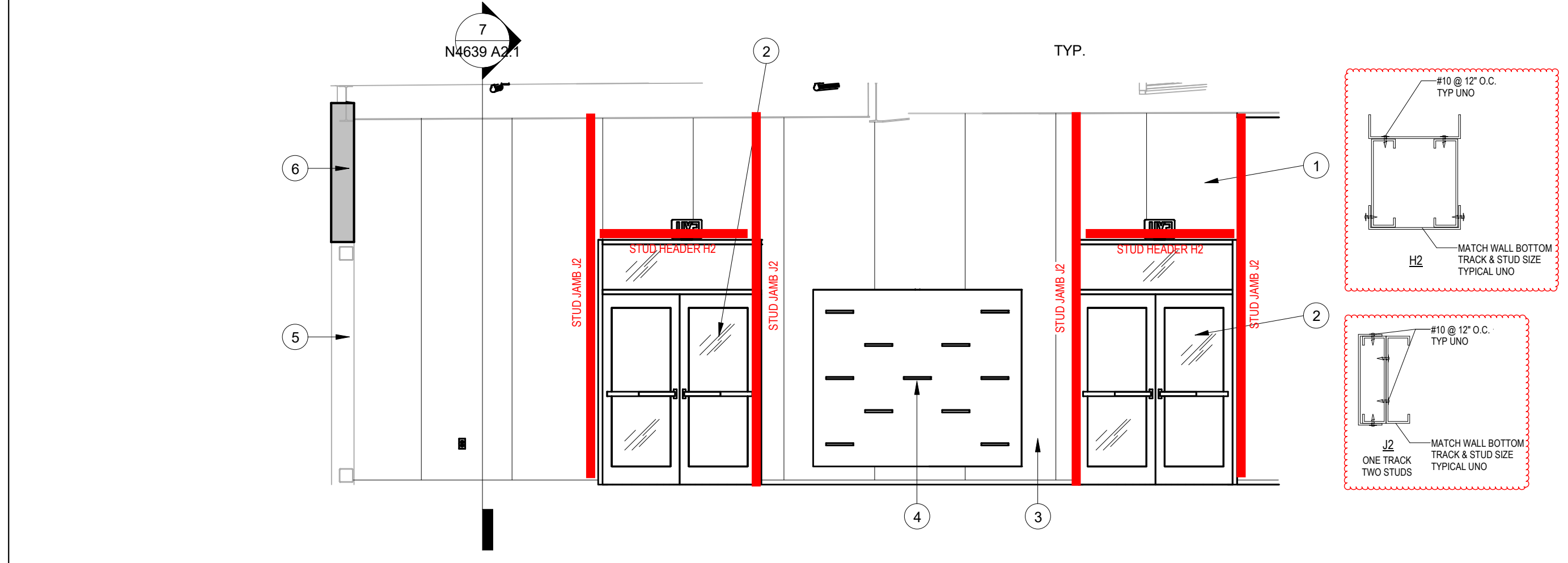
N4639 TERRACE SOUTH INTERIOR ELEVATION 4 SCALE: 1/4" = 1'-0"



N4639 TERRACE NORTH INTERIOR ELEVATION 3 SCALE: 1/4" = 1'-0"

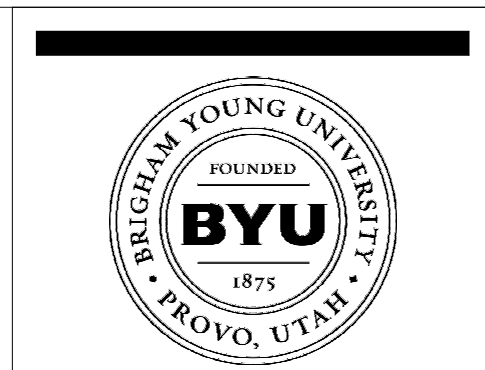


N4639 TERRACE ENTRANCE DOORS EXTERIOR ELEVATION 2 SCALE: 1/4" = 1'-0"



N4639 TERRACE ENTRANCE DOORS INTERIOR ELEVATION 1 SCALE: 1/4" = 1'-0"

- REFERENCE NOTES**
- NEW 6" 18GA. METAL STUDS @ 16" O.C. W/ 2" INSULATED ALUM. PANELS EACH SIDE; EXTEND FROM FLOOR TO DECK (APPROX. 15'-0). SEE DETAIL 7/A2.1
 - NEW 6070 DOUBLE ALUMINUM GLASS STOREFRONT DOORS W/ ALUMINUM FRAME
 - NEW 6020 TRANSOM WINDOW WITH ALUMINUM FRAME
 - NEW LOCATION OF BACK-LIT SHOE DISPLAY; PROVIDE ELECTRICAL POWER, SEE ELECTRICAL
 - EXIST. INSULATED ALUM. PANEL WALL SYSTEM TO REMAIN, PROTECT AS REQ'D.
 - ALTERNATE #1 - NEW 6" 18GA. METAL STUDS @ 16" O.C. W/ 2" INSULATED ALUM. PANELS EACH SIDE; EXTEND FROM TOP OF EXIST. WALL TO UNDERSIDE OF EXIST. STEEL BEAM, SEE DETAIL 8/A2.1
 - ALTERNATE #1 - REMOVE & REPLACE EXIST. ALUMINUM WALL CAP INCLUDING POP-RIVETS, CAULK & DRIP EDGE WITH NEW ALUMINUM WALL CAP INCLUDING POP-RIVETS (NO DRIP EDGE)
 - EXIST. STEEL CABINETS & STONE COUNTER TOPS TO REMAIN, PROTECT AS REQ'D.
 - EXIST. ELECTRICAL POWER PANEL TO REMAIN, SEE ELECTRICAL PLANS
 - NEW 3 5/8" 18GA. METAL STUDS @ 16" O.C. W/ 2" INSULATED ALUM. PANELS EACH SIDE; EXTEND FROM TOP OF EXIST. WALL TO UNDERSIDE OF EXIST. ROOF DECK (APPROX. 6'-0"), SEE DETAIL 8/A2.1 (SIMILAR)
 - NEW 2x2 LAY-IN CEILING SYSTEM INCLUDING LIGHT FIXTURES & HVAC, SEE MECHANICAL & ELECTRICAL
 - NEW 3 5/8" 18GA. METAL STUDS @ 16" O.C. W/ 2" INSULATED ALUM. PANELS EACH SIDE; EXTEND FROM FLOOR TO ROOF DECK (APPROX. 15'-0), SEE DETAIL 7/A2.1
 - EXIST. DOOR TO REMAIN, PROTECT AS REQ'D.
 - EXIST. STEEL STRUCTURE & ROOF DECK TO REMAIN, PROTECT AS REQ'D.
 - EXIST. STRUCTURAL STEEL BEAM TO REMAIN, PROTECT AS REQ'D.
 - ALTERNATE #1 - NEW ALUMINUM BREAK-METAL TO MATCH INSULATED PANEL WALL SYSTEM W/ 2" TAB AT TOP & BOTTOM, FASTEN TOP TAB TO EXIST. INSULATED PANEL WALL SYSTEM W/ SELF-TAPPING SCREWS AS REQ'D.
 - INSULATED ALUMINUM PANELS SHALL BE OMITTED ABOVE NEW LAY-IN CEILINGS, TYP. (RESTROOMS & CATERING)



FACILITIES PLANNING
 240 BRWB PROVO, UTAH 84602
 PHONE: (801) 422-5504
 FAX: (801) 422-0566

DATE: 03.28.2024
 DESIGNER: K. MARTIN
 DRAWN BY: FR

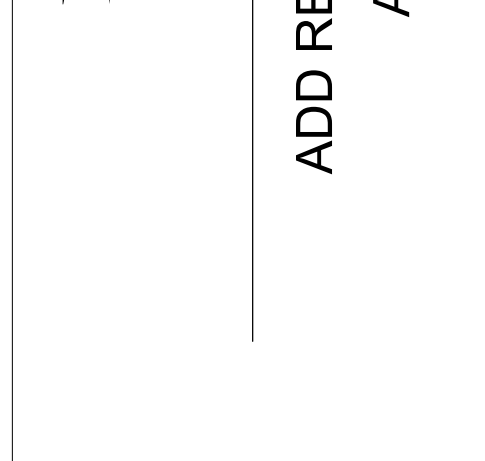
ADA CHECK: _____
 CODE CHECK: _____
 STRUCTURAL: _____
 ENGINEERING: _____
 PLANNING DIR: _____

CLIENT APPROVAL _____ DATE _____

REVISIONS

NO.	DESCRIPTION	DATE

BRIGHAM YOUNG UNIVERSITY
 ADD RESTROOMS TO CHAMPIONS TERRACE
 ADVANCEMENT VP - ATHLETICS
 LAVELL EDWARDS STADIUM (LVES) - LEVEL 3 NE CORNER



INTERIOR ELEVATIONS & WALL SECTIONS

WORK ORDER & SHEET NO.
N4639
A2.1
 CONSTRUCTION DOCUMENTS

HDWR. GROUP 1	(3) EA. (1) EA. (1) EA. (1) EA.	FULL MORTISE - 5 KNUCKLE HINGE CLOSER CRASH BAR CONCAVE WALL STOP (AS NEEDED)	MCKINNEY LCN SARGENT ROCKWOOD	TA2714 4 1/2" x 4 1/2" 26D 4040XP PA 689 8888 32D EXIT ONLY WS406 26D
HDWR.GROUP 2	(3) EA. (1) EA. (1) EA. (2) EA.	FULL MORTISE - 5 KNUCKLE HINGE DOUBLE INDICATOR LOCK CONCAVE WALL STOP (AS NEEDED) SS KICKPLATE	MCKINNEY SARGENT ROCKWOOD ROCKWOOD	TA2714 4 1/2" x 4 1/2" 26D LC VSR 8257 VNI L 26D LH/RH WS406 26D 34x10 32D
HDWR. GROUP 3	(2) EA. (2) EA. (1) EA. (1) EA. (1) EA. (2) EA.	CONTINUOUS HINGE CLOSER CRASH BAR CRASH BAR MULLION LADDER PULLS	MANUF. LCN SARGENT SARGENT VONDUPRIN IVES	ND92LD RHO 626 4040XP PA 689 8888 32D EXIT ONLY LC-IN120-8877-F-BIPS-B-ET-L-32D-LH-36" 5754 CLEAR ANNO. 9264F-36-20-630
HDWR. GROUP 4	(2) EA. (2) EA. (2) EA. (1) EA. (2) EA.	CONTINUOUS HINGE CLOSER CRASH BAR MULLION LADDER PULLS	MANUF. LCN SARGENT VONDUPRIN IVES	ND92LD RHO 626 4040XP PA 689 8888 32D EXIT ONLY 5754 CLEAR ANNO. 9264F-36-20-630

BRIGHAM YOUNG UNIVERSITY

ADDENDUM RECEIPT

DATE: April 2, 2024

PROJECT: LVES Build Restrooms at Champion's Terrace University Special Events

PROJ. #: WO# N4639

We acknowledge receipt of Addendum Number 1.

COMPANY: _____

BY: _____

TITLE: _____

PLEASE EMAIL SIGNED RECEIPT TO construction@byu.edu