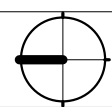
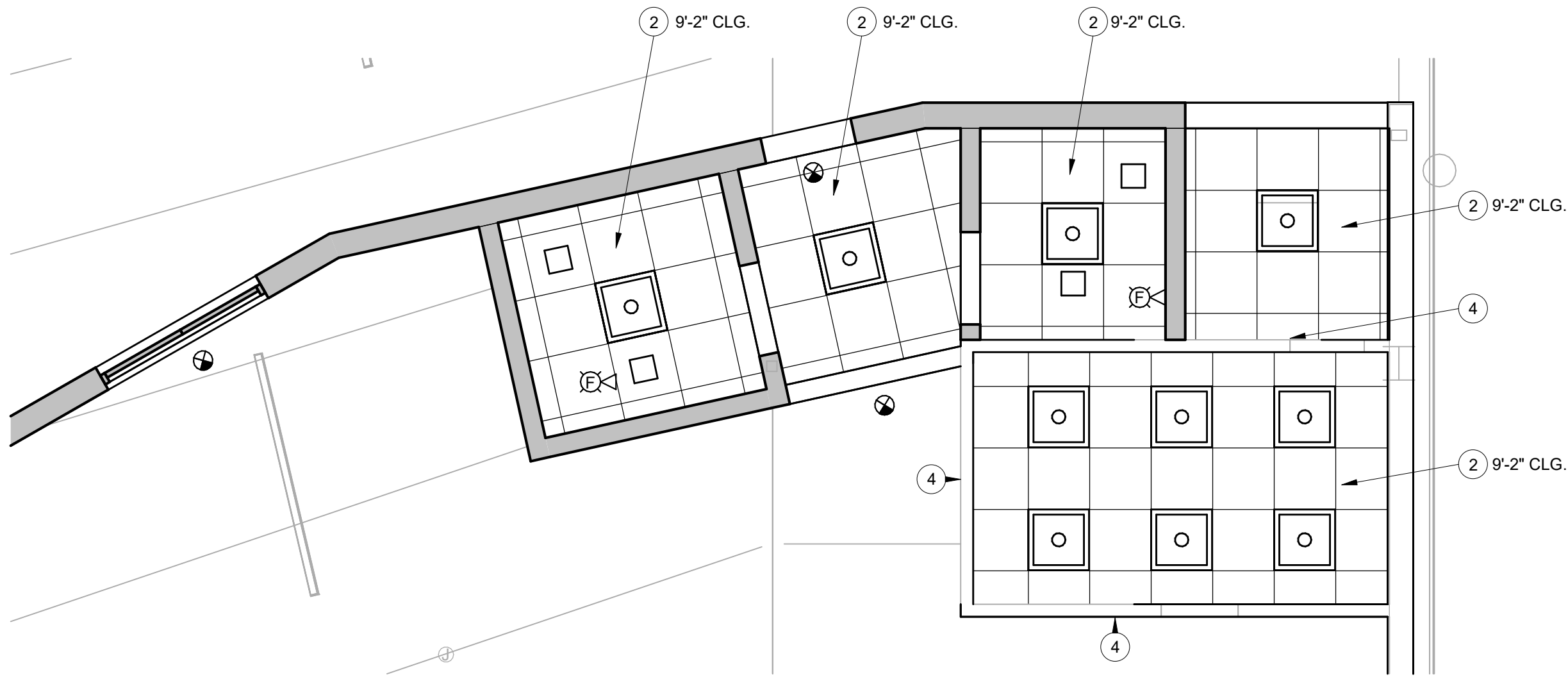


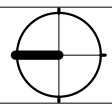
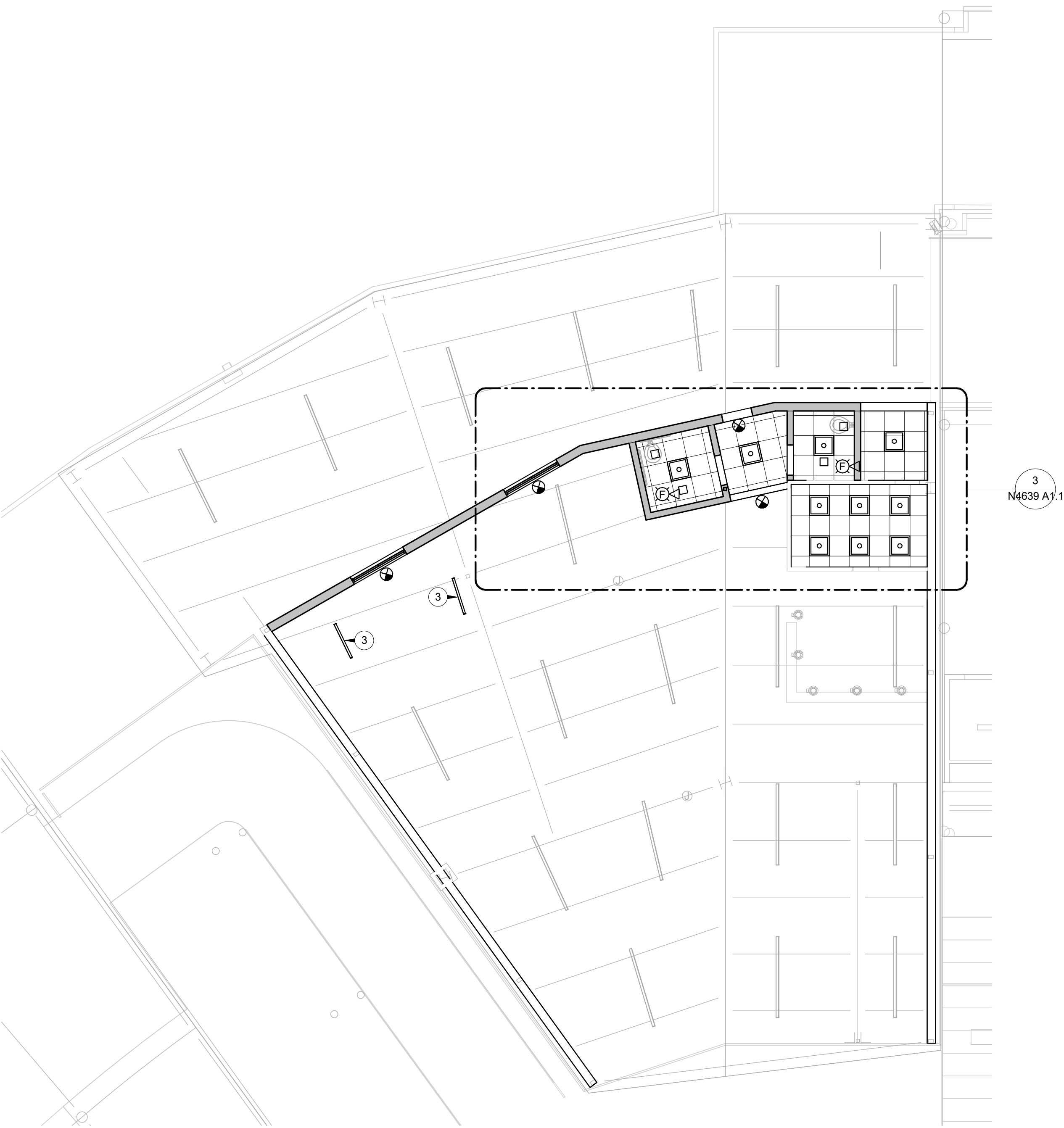
3/27/2024 6:02:30 PM C:\Users\kam2\Documents\LVES_kam2\7DL6\W.rvt



N4639 ENLARGED CEILING PLAN

SCALE: 1/4" = 1'-0"

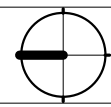
3



N4639 NEW CEILING PLAN

SCALE: 1/8" = 1'-0"

2



N4639 DEMOLITION CEILING PLAN

SCALE: 1/8" = 1'-0"

1

REFERENCE NOTES

- 1 EXIST. OPEN-STRUCTURE CEILING TO REMAIN; REMOVE SOME LIGHT FIXTURES, SEE ELECTRICAL
- 2 NEW 2x2 LAY-IN CEILING SYSTEM INCLUDING LIGHT FIXTURES & HVAC, SEE MECHANICAL & ELECTRICAL
- 3 NEW LIGHT FIXTURES, SEE ELECTRICAL
- 4 NEW 3 5/8" 18GA. METAL STUDS @ 16" O.C. W/ 2" INSULATED ALUM. PANELS EACH SIDE; EXTEND FROM TOP OF EXIST. WALL TO UNDERSIDE OF EXIST. ROOF DECK (APPROX. 6'-0"), SEE DETAIL 8/A2.1 (SIMILAR)



FACILITIES PLANNING

240 BRWB PROVO, UTAH 84602
PHONE: (801) 422-5504
FAX: (801) 422-0566

DATE: 03.28.2024
DESIGNER: K. MARTIN
DRAWN BY: FR

ADA CHECK:

CODE CHECK:

STRUCTURAL:

ENGINEERING:

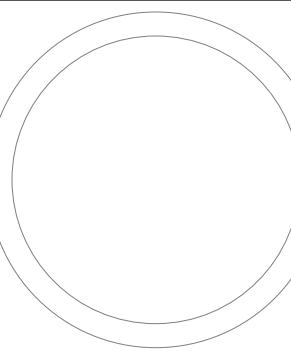
PLANNING DIR:

CLIENT APPROVAL DATE

REVISIONS

BRIGHAM YOUNG
UNIVERSITY

ADD RESTROOMS TO CHAMPIONS TERRACE
ADVANCEMENT VP - ATHLETICS
LAVELL EDWARDS STADIUM (LVES) - LEVEL 3 NE CORNER

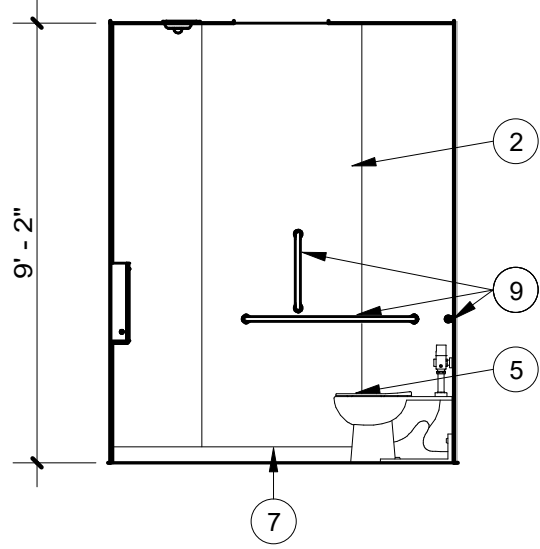


DEMOLITION & NEW
CEILING PLANS

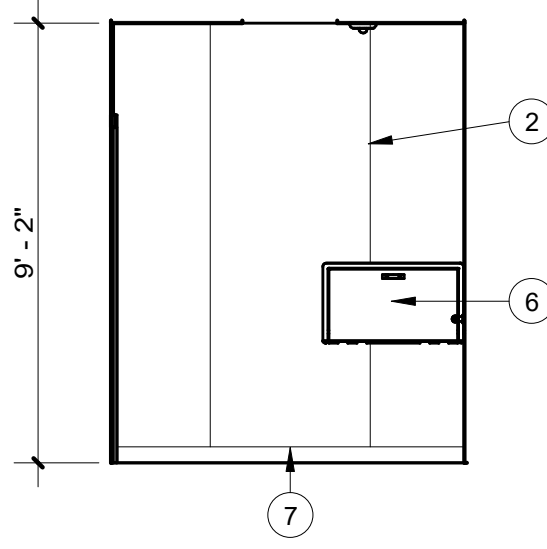
WORK ORDER & SHEET NO.

N4639
A1.1

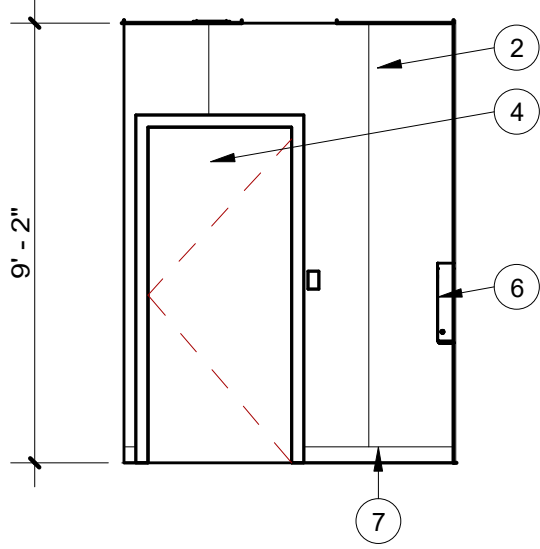
CONSTRUCTION DOCUMENTS



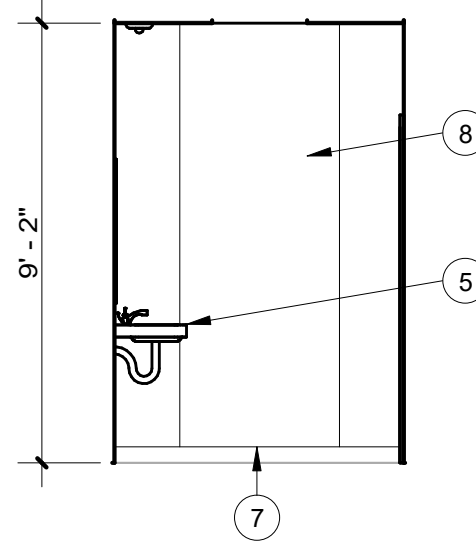
N4639 ADA RESTROOM NORTH ELEVATION
SCALE: 1/4" = 1'-0" 13



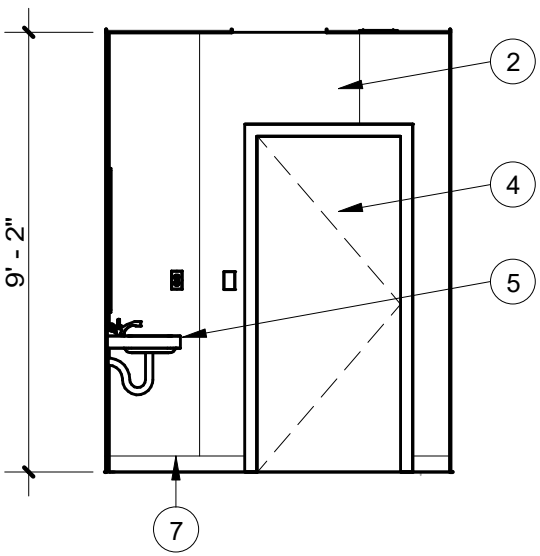
N4639 ADA RESTROOM WEST ELEVATION
SCALE: 1/4" = 1'-0" 12



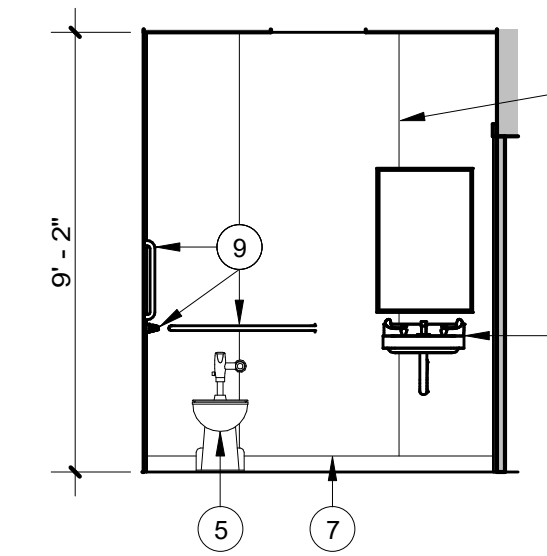
N4639 SINGLE-USE NORTH ELEVATION
SCALE: 1/4" = 1'-0" 9



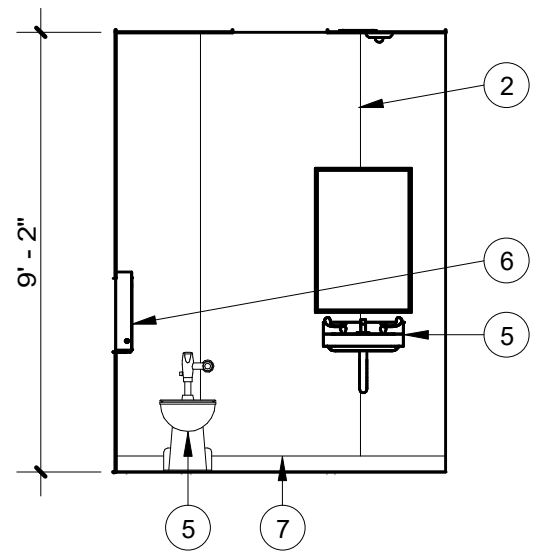
N4639 SINGLE-USE WEST ELEVATION
SCALE: 1/4" = 1'-0" 8



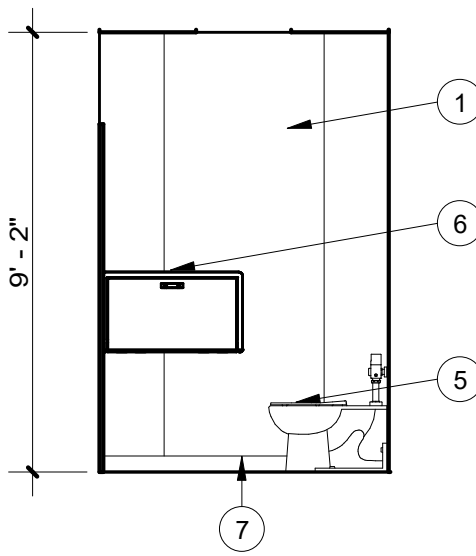
N4639 ADA RESTROOM SOUTH ELEVATION
SCALE: 1/4" = 1'-0" 11



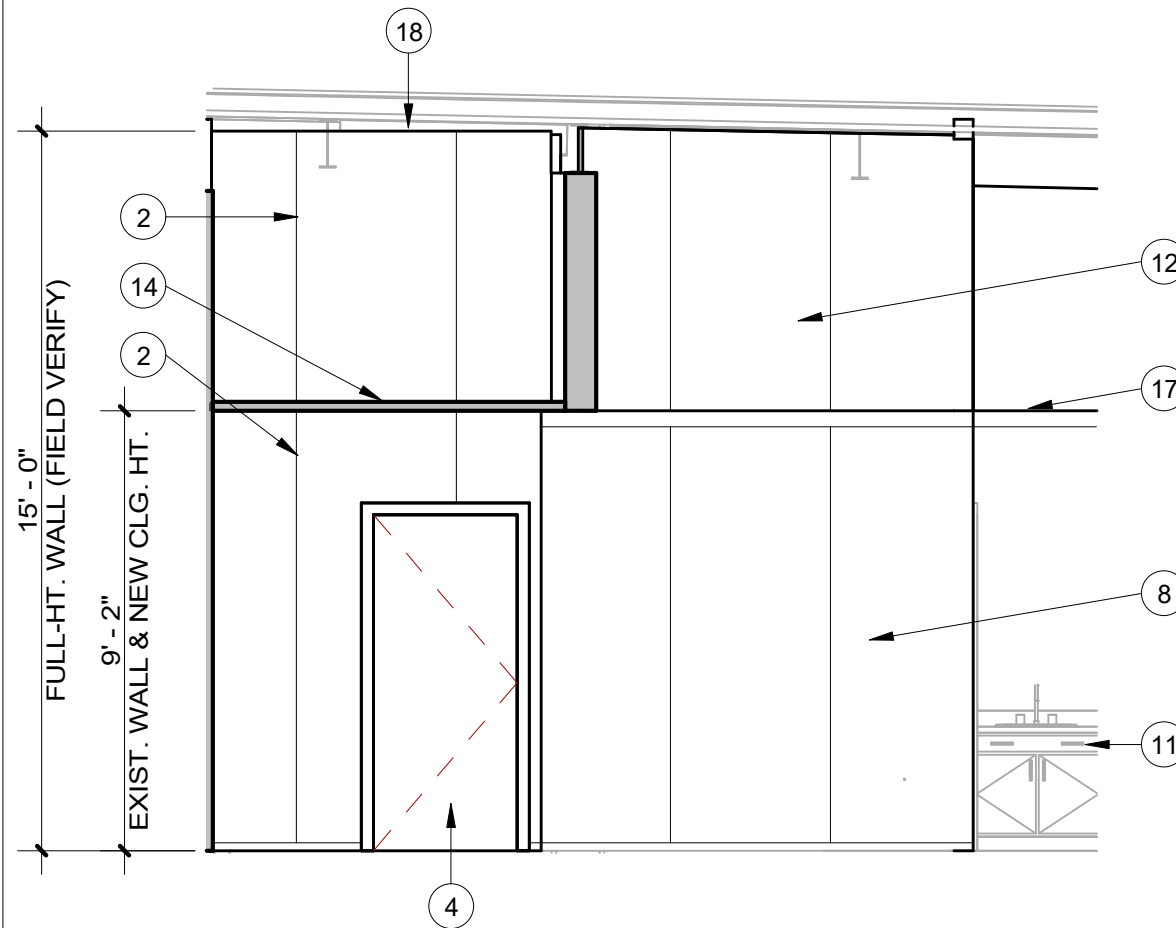
N4639 ADA RESTROOM EAST ELEVATION
SCALE: 1/4" = 1'-0" 10



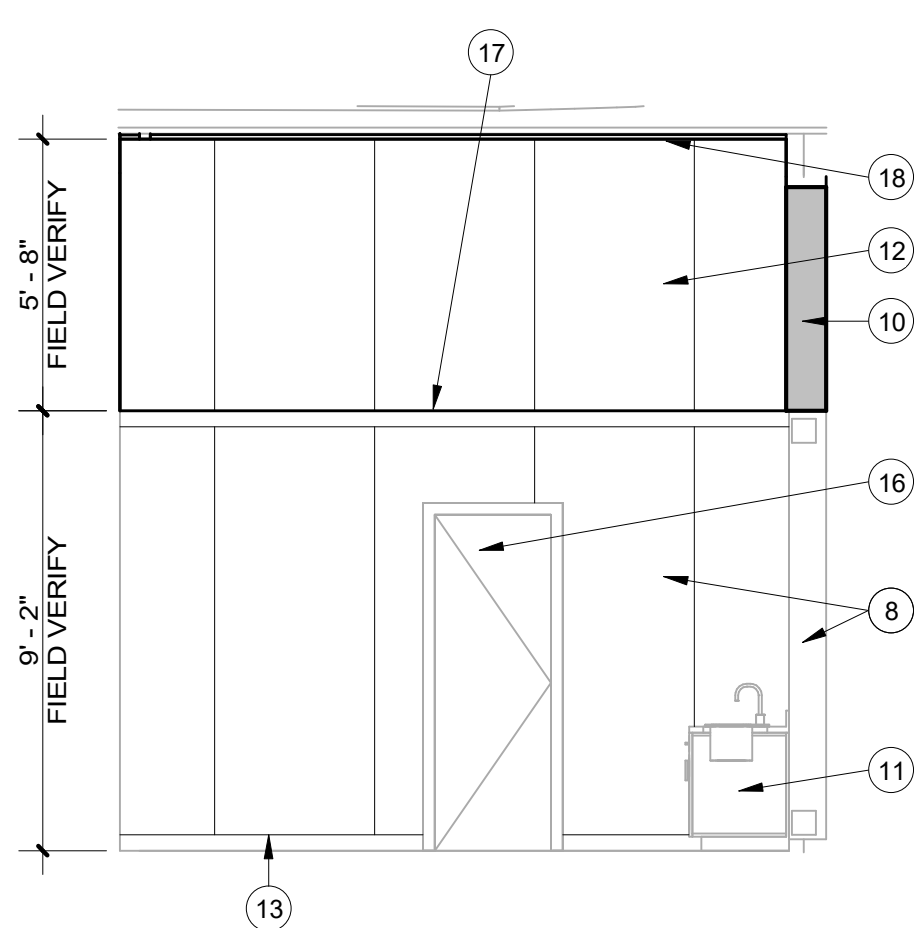
N4639 SINGLE-USE SOUTH ELEVATION
SCALE: 1/4" = 1'-0" 7



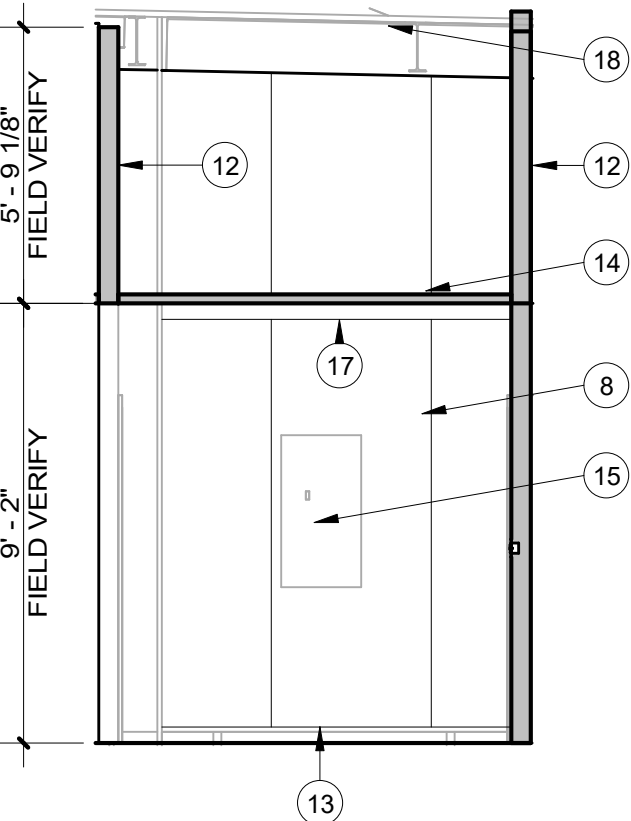
N4639 SINGLE-USE EAST ELEVATION
SCALE: 1/4" = 1'-0" 6



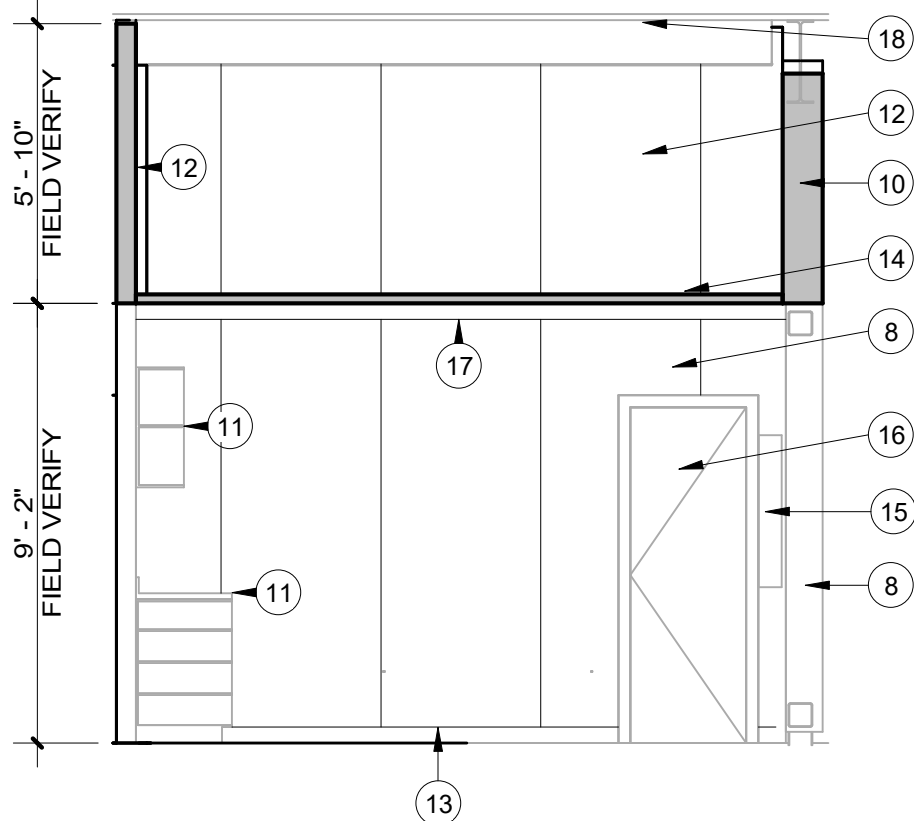
N4639 HOSTING PARTIAL SOUTH ELEV.
SCALE: 1/4" = 1'-0" 5



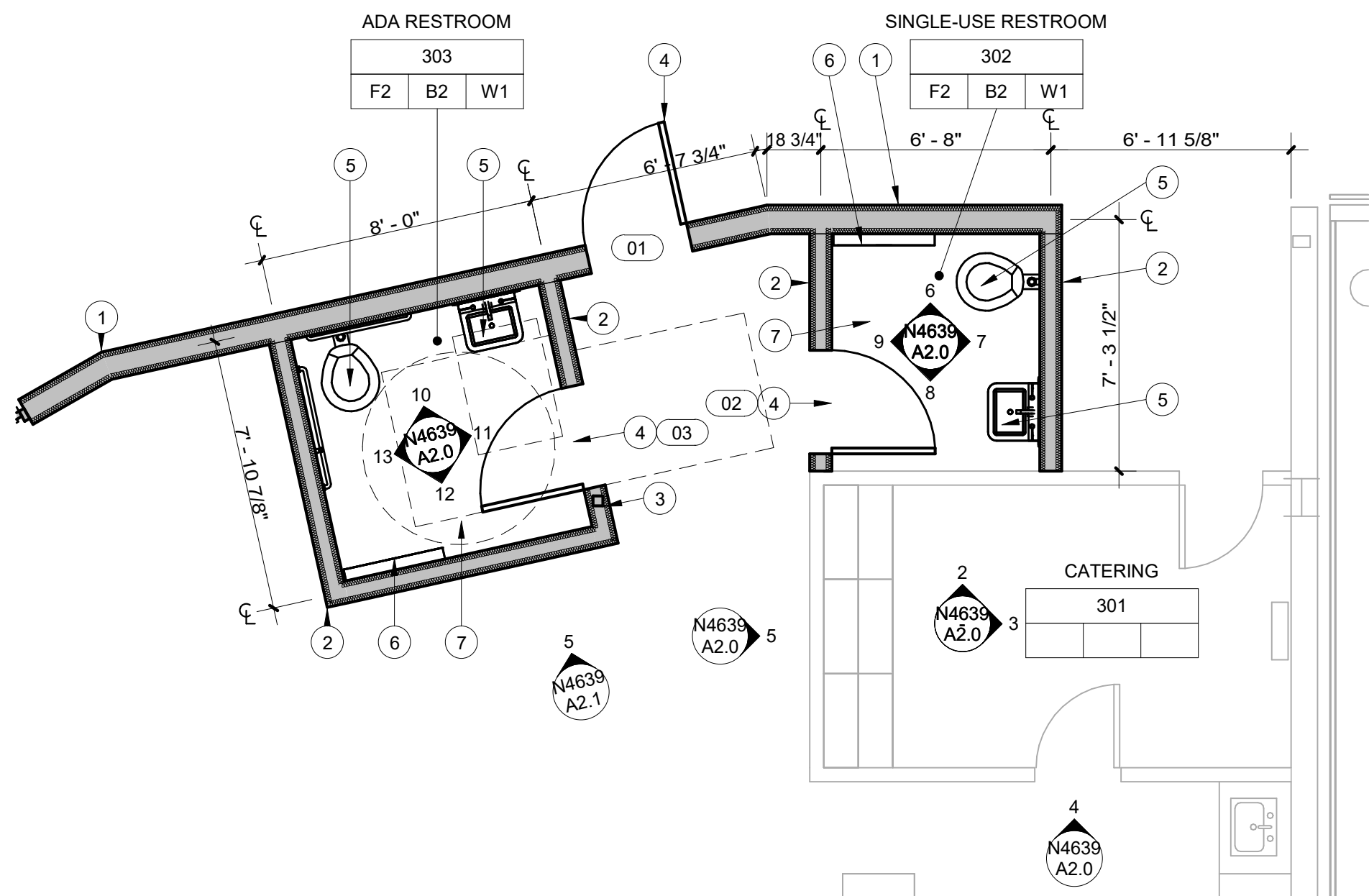
N4639 SERVING AREA EAST ELEVATION
SCALE: 1/4" = 1'-0" 4



N4639 CATERING SOUTH ELEVATION
SCALE: 1/4" = 1'-0" 3



N4639 CATERING EAST ELEVATION
SCALE: 1/4" = 1'-0" 2



N4639 ENLARGED RESTROOM PLAN
SCALE: 1/4" = 1'-0" 1

REFERENCE NOTES

- 1 NEW 6" 18GA. METAL STUDS @ 16" O.C. W/ 2" INSULATED ALUM. PANELS EACH SIDE; EXTEND FROM FLOOR TO DECK (APPROX. 15'-0); SEE DETAIL 7/A2.1
- 2 NEW 3 5/8" 18GA. METAL STUDS @ 16" O.C. W/ 2" INSULATED ALUM. PANELS EACH SIDE; EXTEND FROM FLOOR TO ROOF DECK (APPROX. 15'-0); SEE DETAIL 7/A2.1
- 3 EXIST. STEEL COLUMN TO REMAIN, PROTECT AS REQ'D.
- 4 NEW 3070 INSULATED METAL DOOR (PAINTED), HARDWARE & PAINTED METAL FRAME
- 5 NEW PLUMBING FIXTURE, SEE PLUMBING
- 6 NEW BABY-CHANGING STATION, PROVIDED BY OWNER & INSTALL BY CONTRACTOR; INSTALL SOLID BLOCKING AT WALL AS REQ'D.
- 7 NEW LVT FLOORING & COMPOSITE BASE (NIC), SEE FINISH SCHEDULE
- 8 EXIST. INSULATED ALUM. PANEL WALL SYSTEM TO REMAIN, PROTECT AS REQ'D.
- 9 NEW STAINLESS STEEL GRAB BAR(S); INSTALL SOLID BLOCKING AT WALL AS REQ'D.
- 10 ALTERNATE #1 - NEW 6" 18GA. METAL STUDS @ 16" O.C. W/ 2" INSULATED ALUM. PANELS EACH SIDE; EXTEND FROM TOP OF EXIST. WALL TO UNDERSIDE OF EXIST. STEEL BEAM, SEE DETAIL 8/A2.1
- 11 EXIST. STEEL CABINETS & STONE COUNTER TOPS TO REMAIN, PROTECT AS REQ'D.
- 12 NEW 3 5/8" 18GA. METAL STUDS @ 16" O.C. W/ 2" INSULATED ALUM. PANELS EACH SIDE; EXTEND FROM TOP OF EXIST. WALL TO UNDERSIDE OF EXIST. ROOF DECK (APPROX. 6'-0"); SEE DETAIL 8/A2.1 (SIMILAR)
- 13 EXIST. LVT FLOORING TO REMAIN, PROTECT AS REQ'D.
- 14 NEW 2x2 LAY-IN CEILING SYSTEM INCLUDING LIGHT FIXTURES & HVAC, SEE MECHANICAL & ELECTRICAL
- 15 EXIST. ELECTRICAL PANEL TO REMAIN, PROTECT AT REQ'D., SEE ELECTRICAL
- 16 EXIST. DOOR TO REMAIN, PROTECT AS REQ'D.
- 17 ALTERNATE #1 - REMOVE & REPLACE EXIST. ALUMINUM WALL CAP INCLUDING POP-RIVETS, CAULK & DRIP EDGE WITH NEW ALUMINUM WALL CAP INCLUDING POP-RIVETS (NO DRIP EDGE)
- 18 NEW R11 VINYL-FACED BATT, INSULATION AT STRUCTURE ABOVE EACH NEW LAY-IN, TYP.



FACILITIES PLANNING
240 BRWB PROVO, UTAH 84602
PHONE: (801) 422-5504
FAX: (801) 422-0566

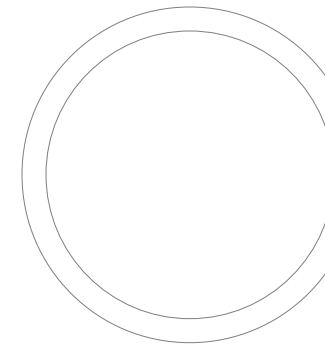
DATE: 03.28.2024
DESIGNER: K. MARTIN
DRAWN BY: FR

ADA CHECK:
CODE CHECK:
STRUCTURAL:
ENGINEERING:
PLANNING DIR:

CLIENT APPROVAL DATE

REVISIONS

BRIGHAM YOUNG
UNIVERSITY
ADD RESTROOMS TO CHAMPIONS TERRACE
ADVANCEMENT VP - ATHLETICS
LAVELLE EDWARDS STADIUM (LVES) - LEVEL 3 NE CORNER

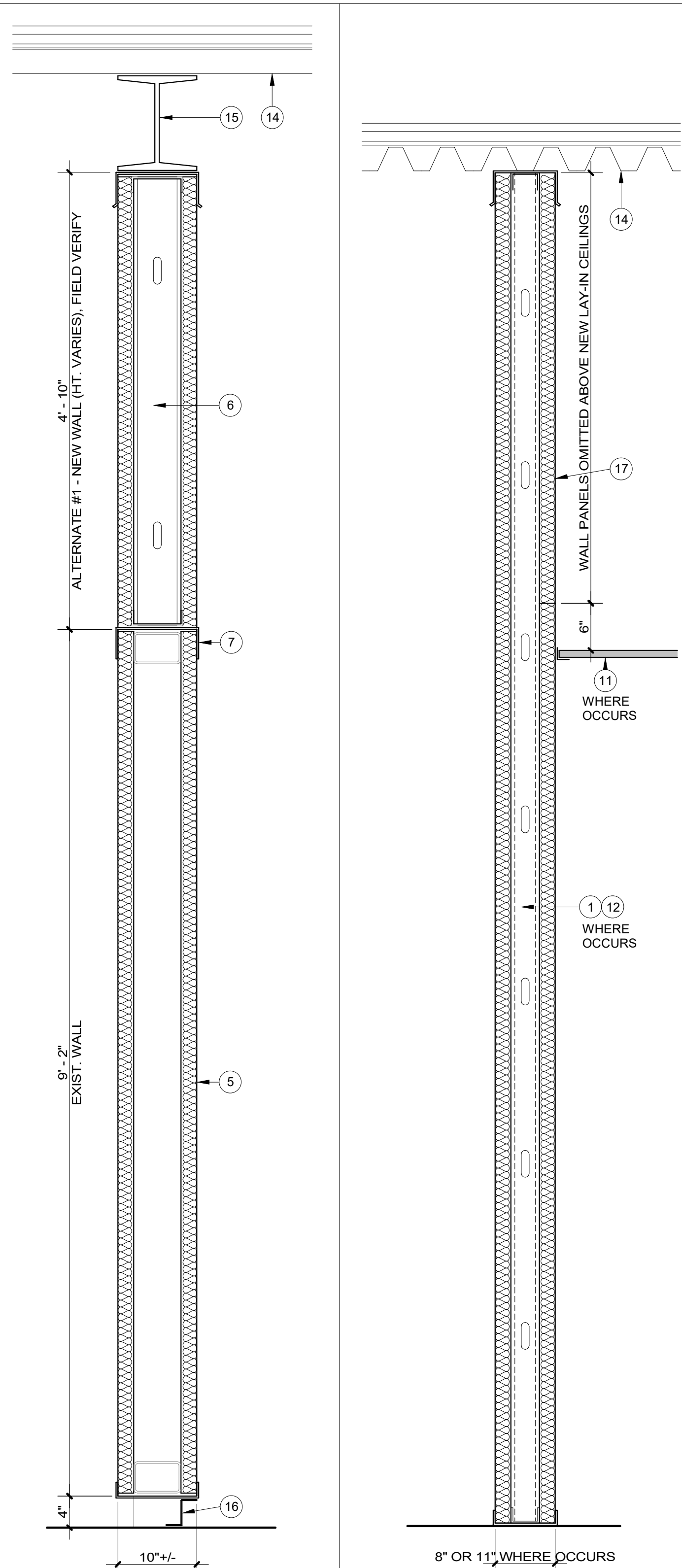


ENLARGED
RESTROOM PLAN &
INTERIOR
ELEVATIONS

WORK ORDER & SHEET NO.

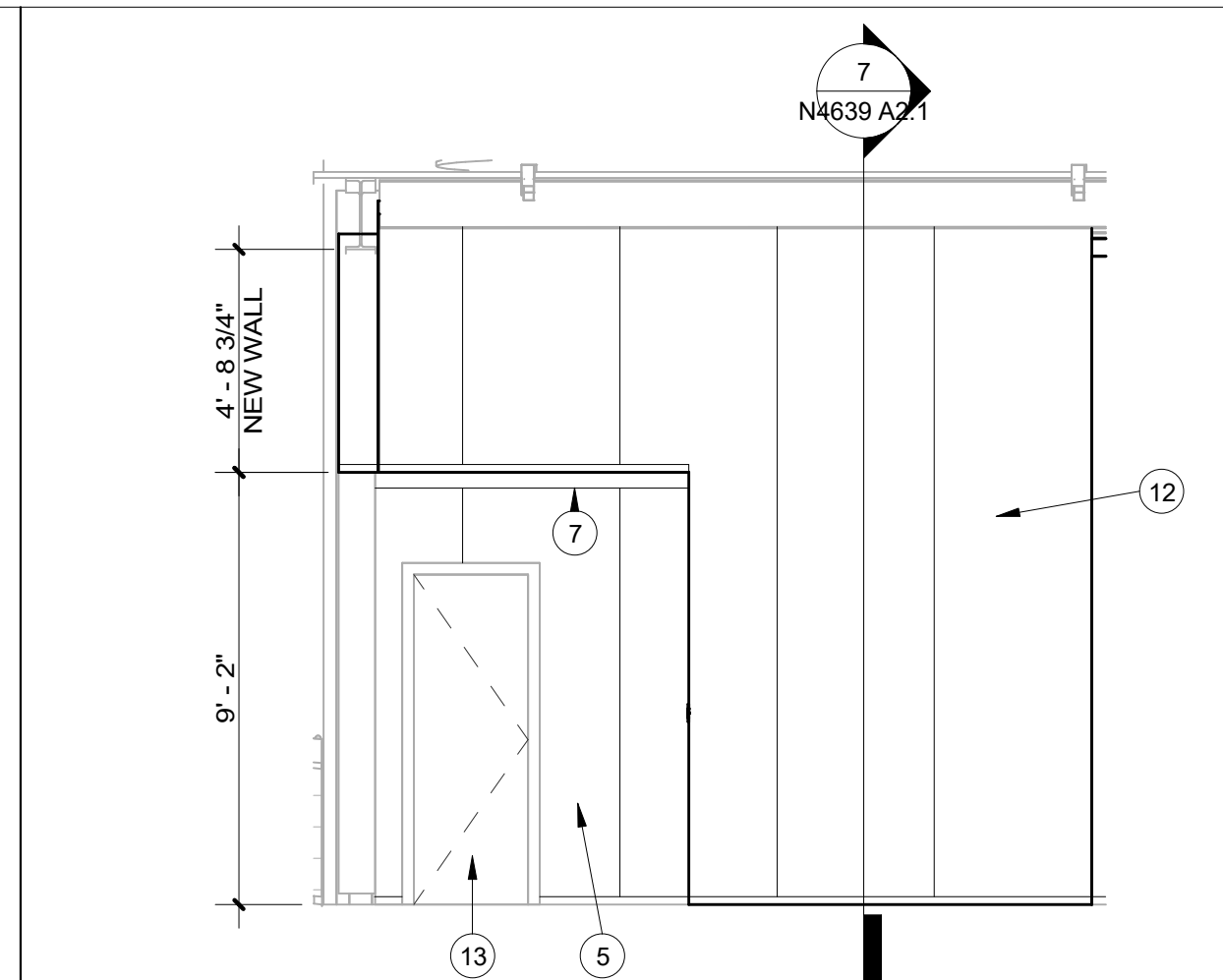
N4639
A2.0

CONSTRUCTION DOCUMENTS

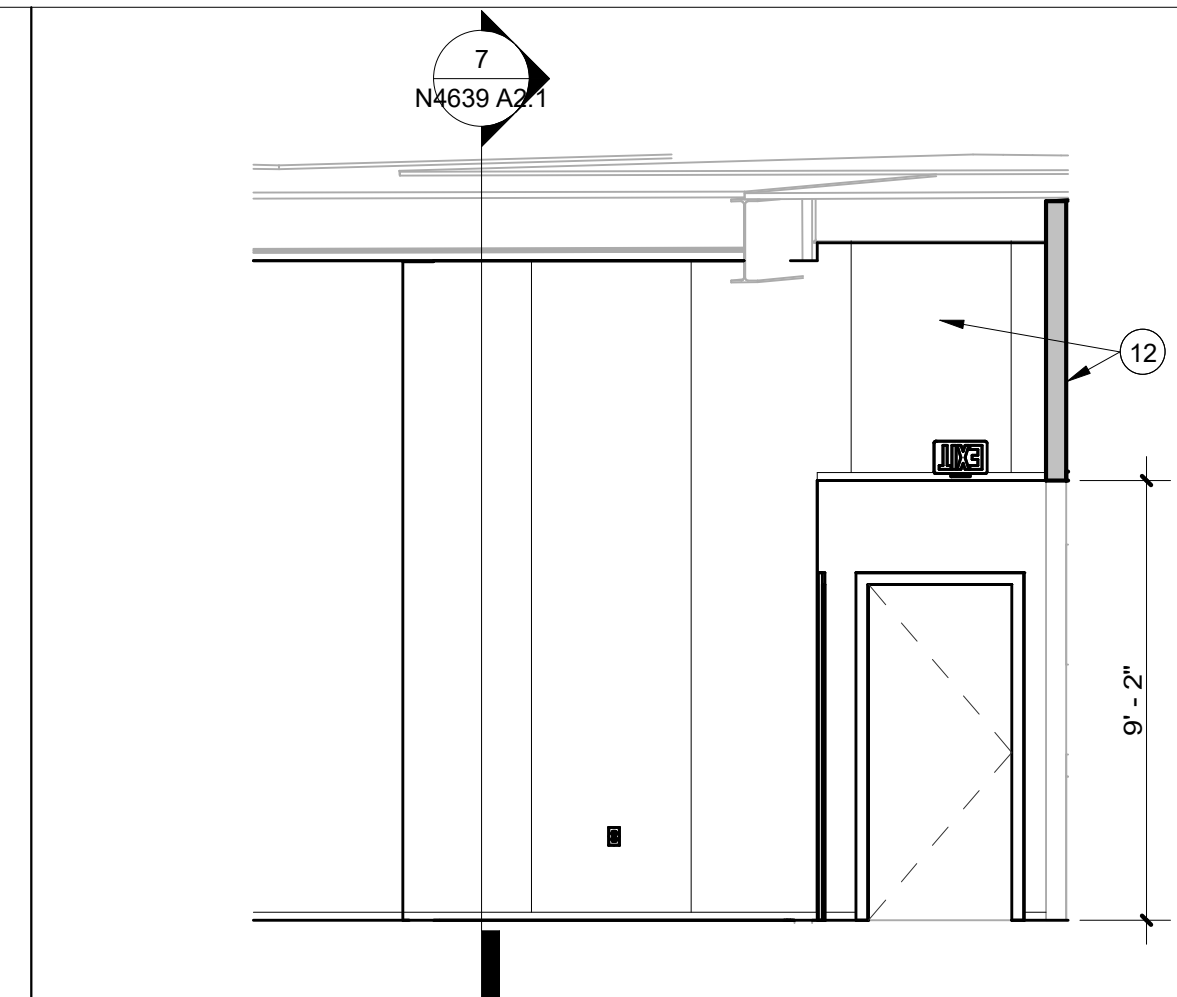


N4639 WALL SECT.. SCALE: 1" = 1'-0"	8
---	----------

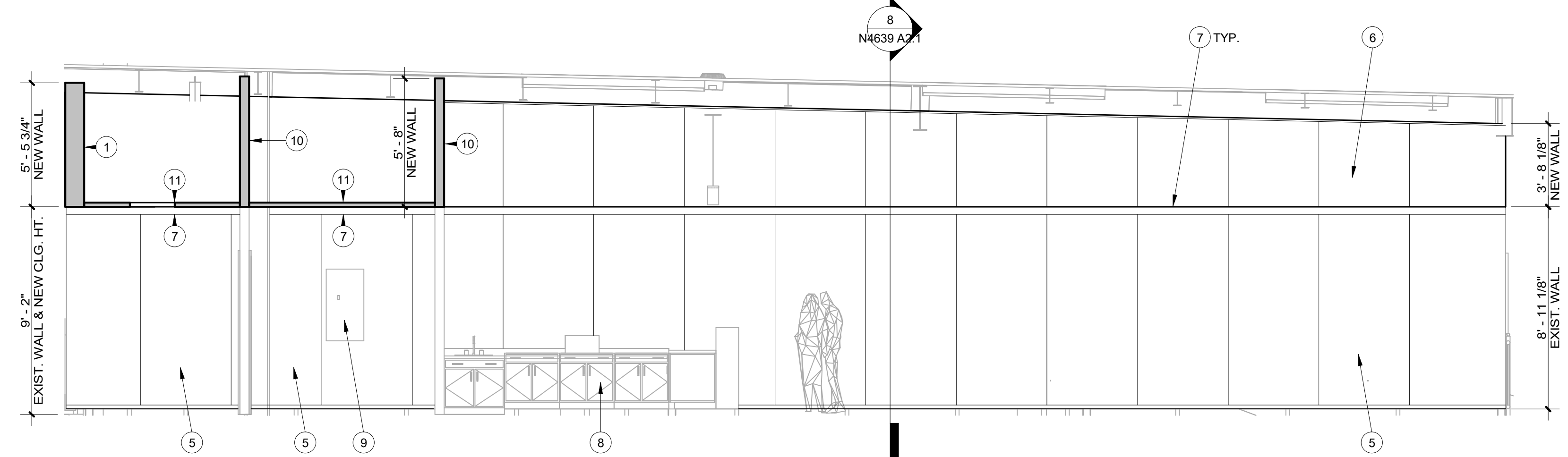
N4639 WALL SECT. SCALE: 1" = 1'-0"	7
--	----------



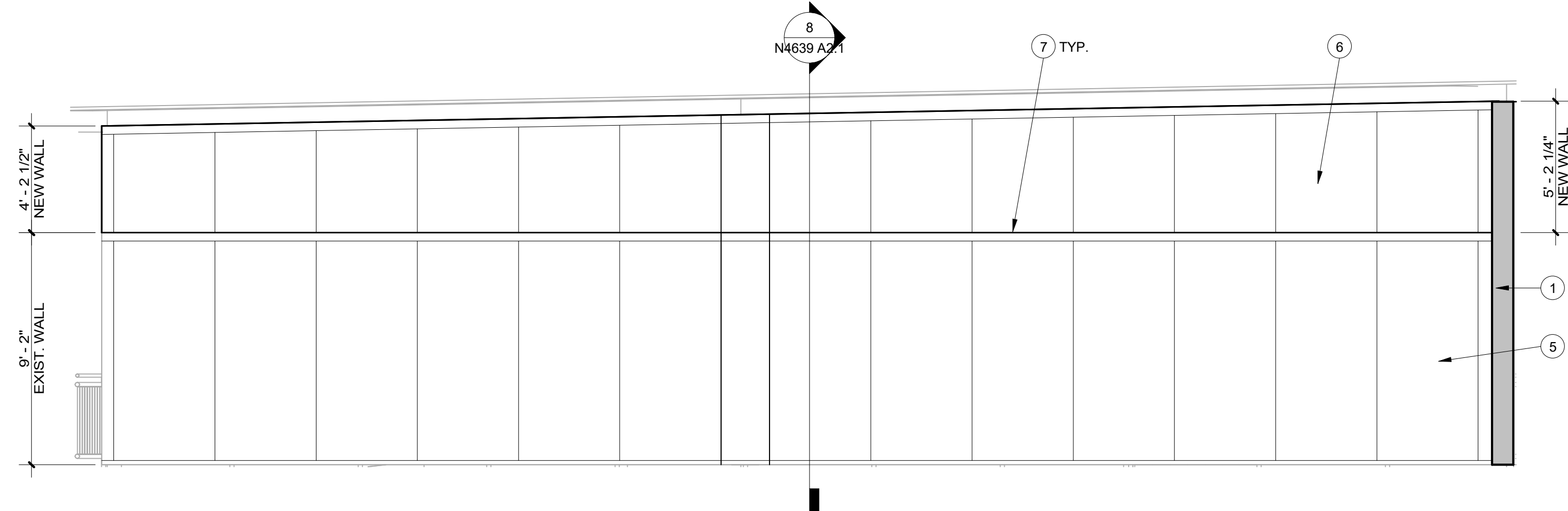
N4639 CATERING ACCESS ELEVATION
SCALE: 1/4" = 1'-0"



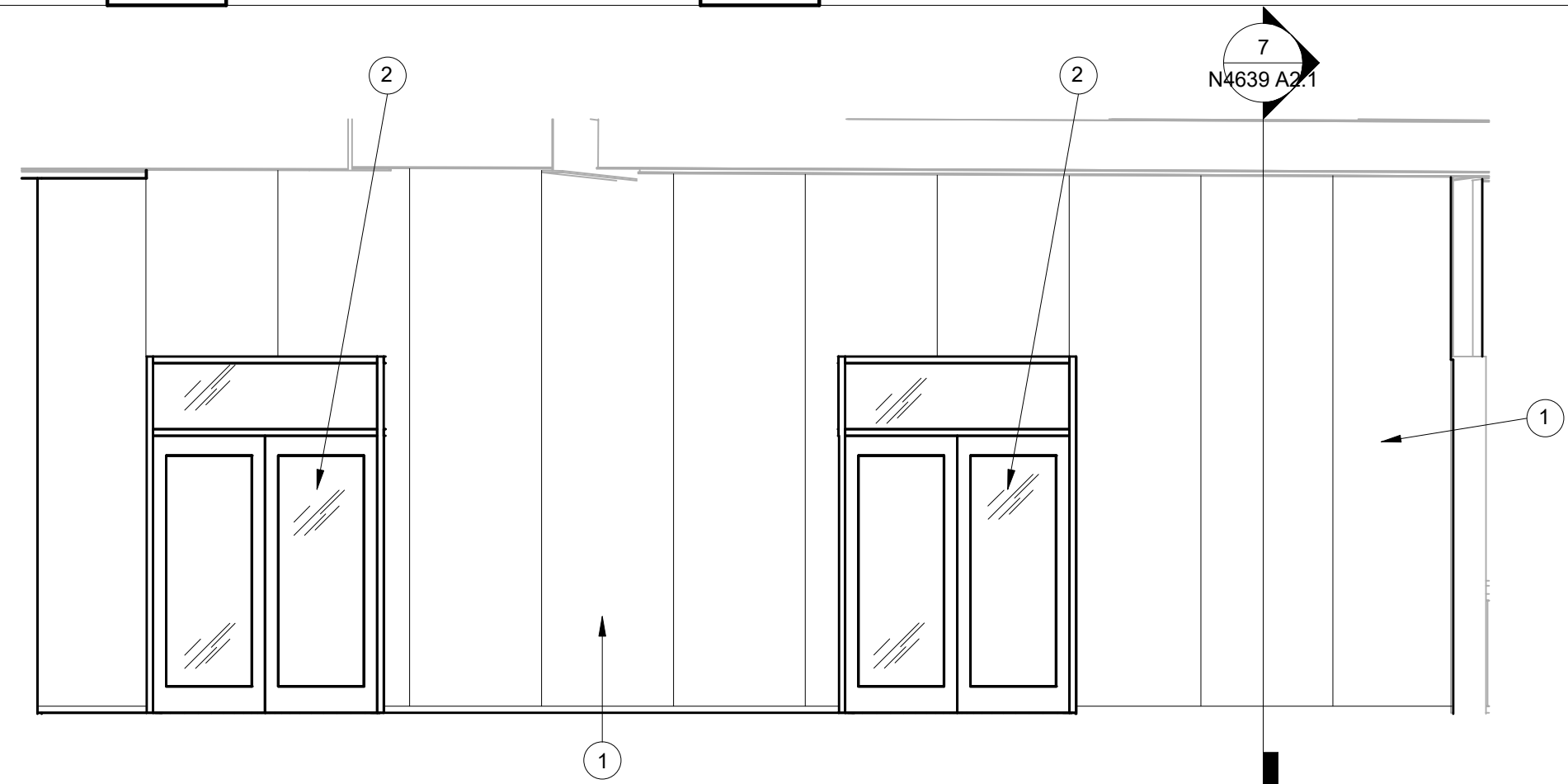
N4639 RESTROOMS ACCESS ELEVATION
SCALE: 1/4" = 1'-0"



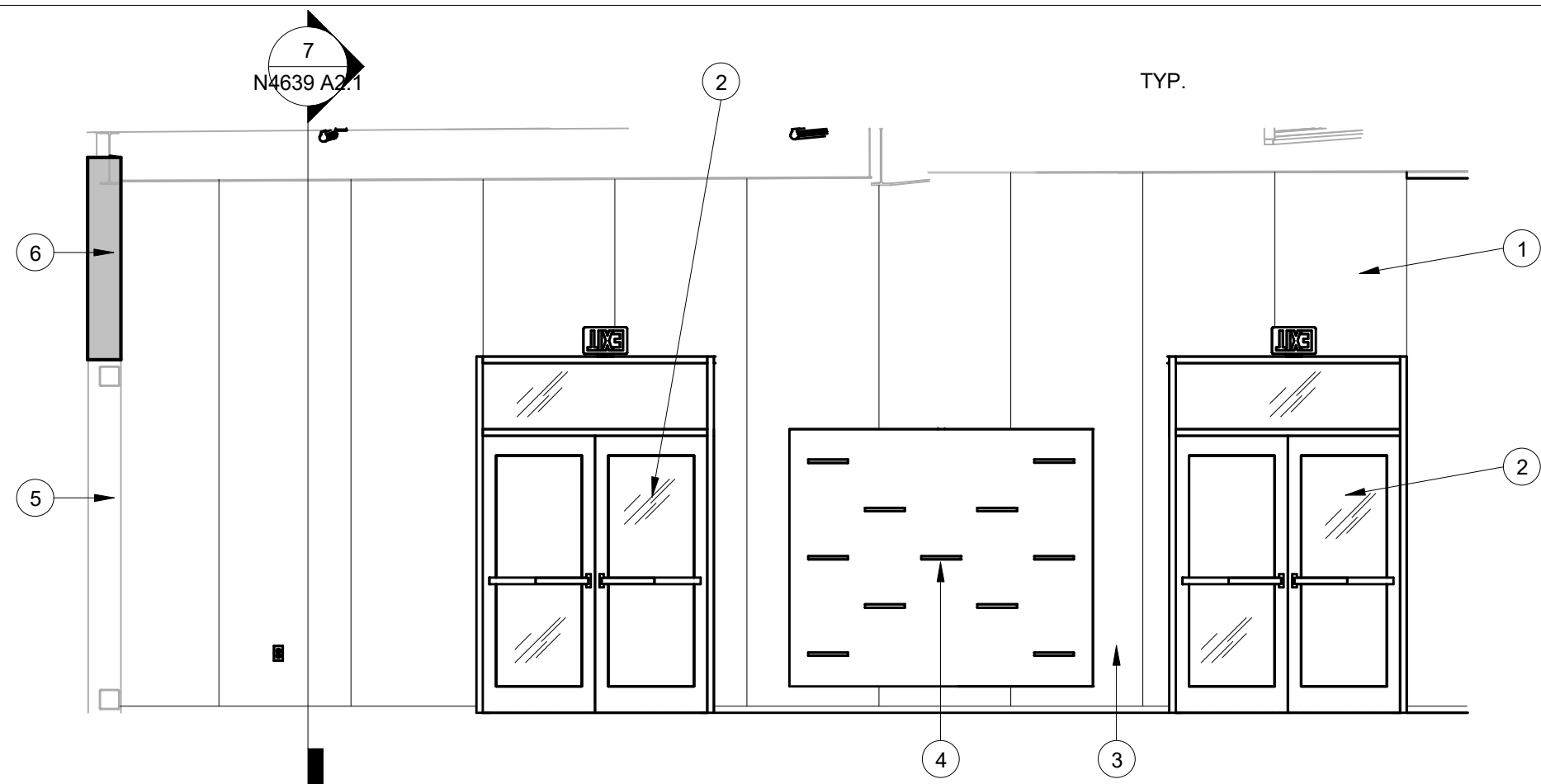
N4639 TERRACE SOUTH INTERIOR ELEVATION
SCALE: 1/4" = 1'-0"



N4639 TERRACE NORTH INTERIOR ELEVATION
SCALE: 1/4" = 1'-0"



N4639 TERRACE ENTRANCE DOORS EXTERIOR ELEVATION
SCALE: 1/4" = 1'-0"



N4639 TERRACE ENTRANCE DOORS INTERIOR ELEVATION
SCALE: 1/4" = 1'-0"

REFERENCE NOTES

- 1 NEW 6" x 18GA. METAL STUDS @ 16" O.C. W/ 2" INSULATED ALUM. PANELS EACH SIDE; EXTEND FROM FLOOR TO DECK (APPROX. 15'-0"), SEE DETAIL 7/2A.1
- 2 NEW 6070 DOUBLE ALUMINUM/GLASS STOREFRONT DOORS W/ ALUMINUM FRAME
- 3 NEW 6020 TRANSOM WINDOW WITH ALUMINUM FRAME
- 4 NEW LOCATION OF BACKLIT SHOE DISPLAY; PROVIDE ELECTRICAL POWER, SEE ELECTRICAL
- 5 EXIST. INSULATED ALUM. PANEL WALL SYSTEM TO REMAIN, PROTECT AS REQ'D.
- 6 ALTERNATE #1 - NEW 6" x 18GA. METAL STUDS @ 16" O.C. W/ 2" INSULATED ALUM. PANELS EACH SIDE; EXTEND FROM TOP OF EXIST. WALL TO UNDERSIDE OF EXIST. STEEL BEAM, SEE DETAIL 8/2A.1
- 7 ALTERNATE #1 - REMOVE & REPLACE EXIST. ALUMINUM WALL CAP INCLUDING POP-RIVETS, CAULK & DRIP EDGE WITH NEW ALUMINUM WALL CAP INCLUDING POP-RIVETS (NO DRIP EDGE)
- 8 EXIST. STEEL CABINETS & STONE COUNTER TOPS TO REMAIN, PROTECT AS REQ'D.
- 9 EXIST. ELECTRICAL POWER PANEL TO REMAIN SEE ELECTRICAL PLANS
- 10 NEW 3 5/8" x 18GA. METAL STUDS @ 16" O.C. W/ 2" INSULATED ALUM. PANELS EACH SIDE; EXTEND FROM TOP OF EXIST. WALL TO UNDERSIDE OF EXIST. ROOF DECK (APPROX. 6'-0"); SEE DETAIL 8/2A.1 (SIMILAR)
- 11 NEW 2x2 LAY IN CEILING SYSTEM INCLUDING LIGHT FIXTURES & HVAC, SEE MECHANICAL & ELECTRICAL
- 12 NEW 3 5/8" x 18GA. METAL STUDS @ 16" O.C. W/ 2" INSULATED ALUM. PANELS EACH SIDE; EXTEND FROM FLOOR TO ROOF DECK (APPROX. 15'-0"), SEE DETAIL 7/2A.1
- 13 EXIST. DOOR TO REMAIN, PROTECT AS REQ'D.
- 14 EXIST. STEEL STRUCTURE & ROOF DECK TO REMAIN, PROTECT AS REQ'D.
- 15 EXIST. STRUCTURAL STEEL BEAM TO REMAIN, PROTECT AS REQ'D.
- 16 ALTERNATE #1 - NEW ALUMINUM BREAK-TAB TO MATCH INSULATED PANEL WALL SYSTEM W/ 2" TAB AT TOP & BOTTOM, FASTEN TOP TAB TO EXIST. INSULATED PANEL WALL SYSTEM W/ SELF-TAPPING SCREWS AS REQ'D.
- 17 INSULATED ALUMINUM PANELS SHALL BE OMITTED ABOVE NEW LAY-IN CEILINGS, TYP. (RESTROOMS & CATERING)



FACILITIES PLANNING

240 BRWB PROVO, UTAH 84602
PHONE: (801) 422-5504
FAX: (801) 422-0566

DATE: 03.28.2024

DESIGNER: K. MARTIN

DRAWN BY: FR

ADA CHECK:

CODE CHECK:

STRUCTURAL:

ENGINEERING

PLANNING DIR

CLIENT APPROVAL

DATE _____

REVISIONS

BRIGHAM YOUNG
UNIVERSITY

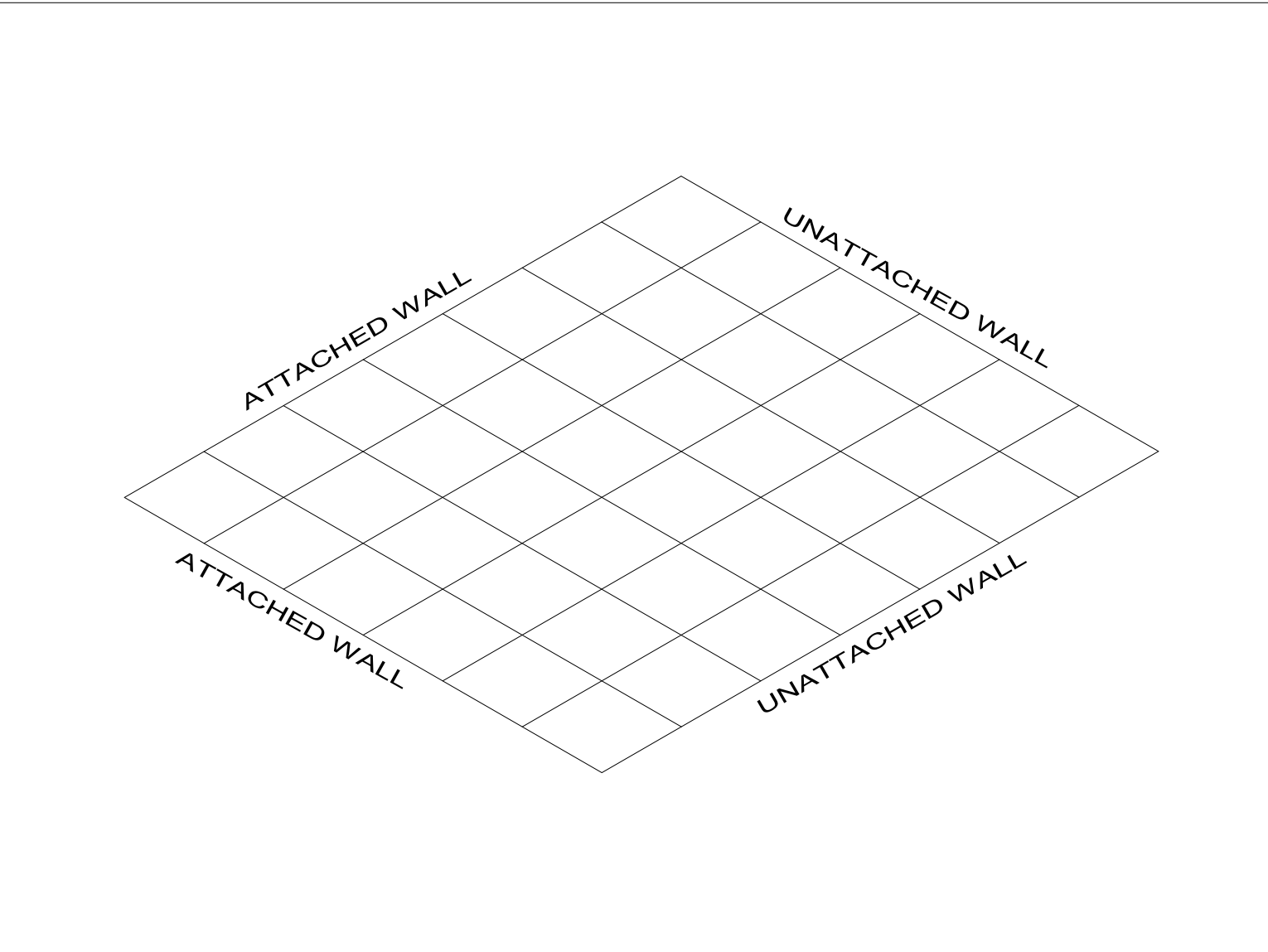
INTERIOR ELEVATIONS & WALL SECTIONS

WORK ORDER & SHEET NO.

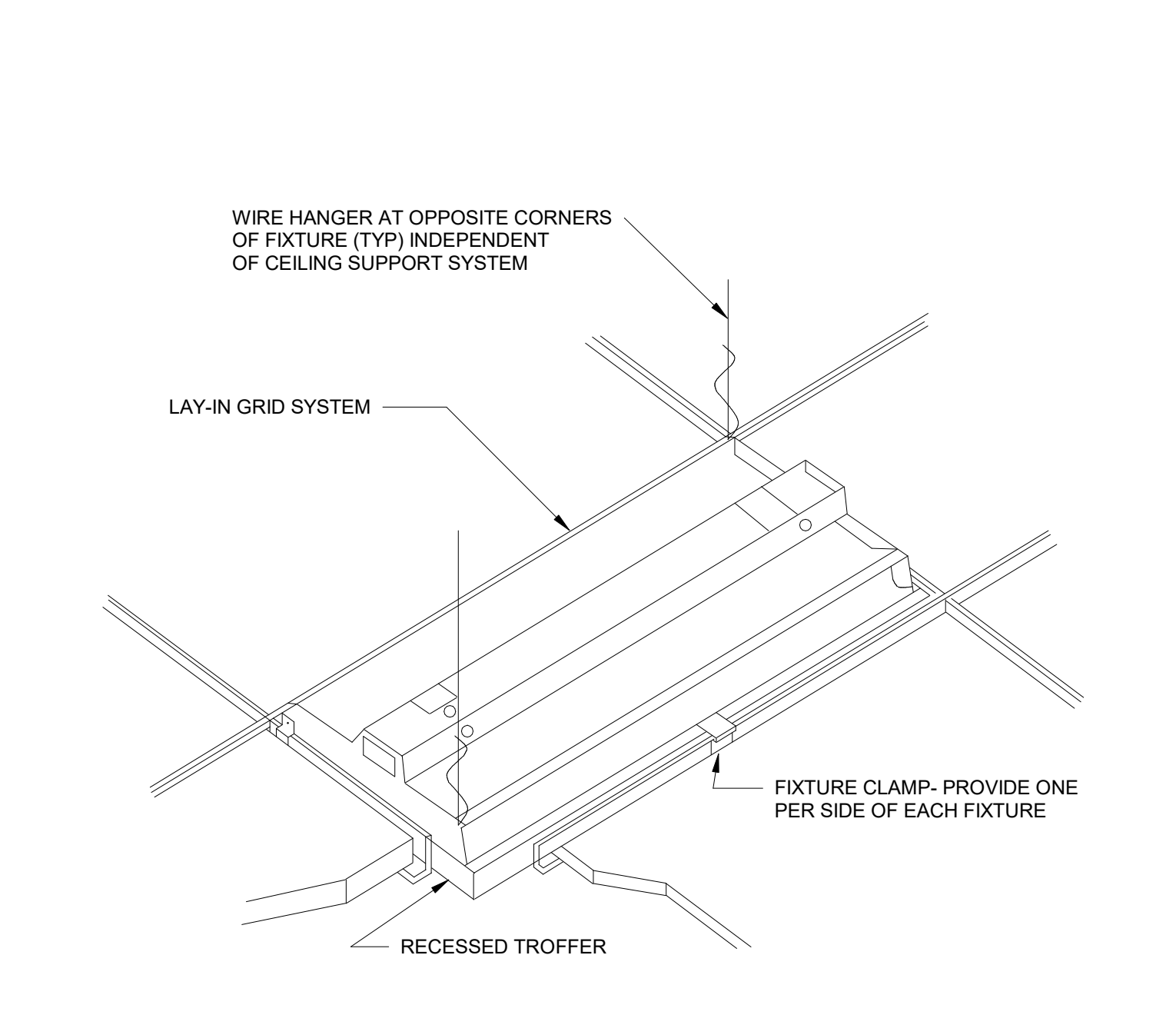
N4639
A2.1

CONSTRUCTION DOCUMENTS

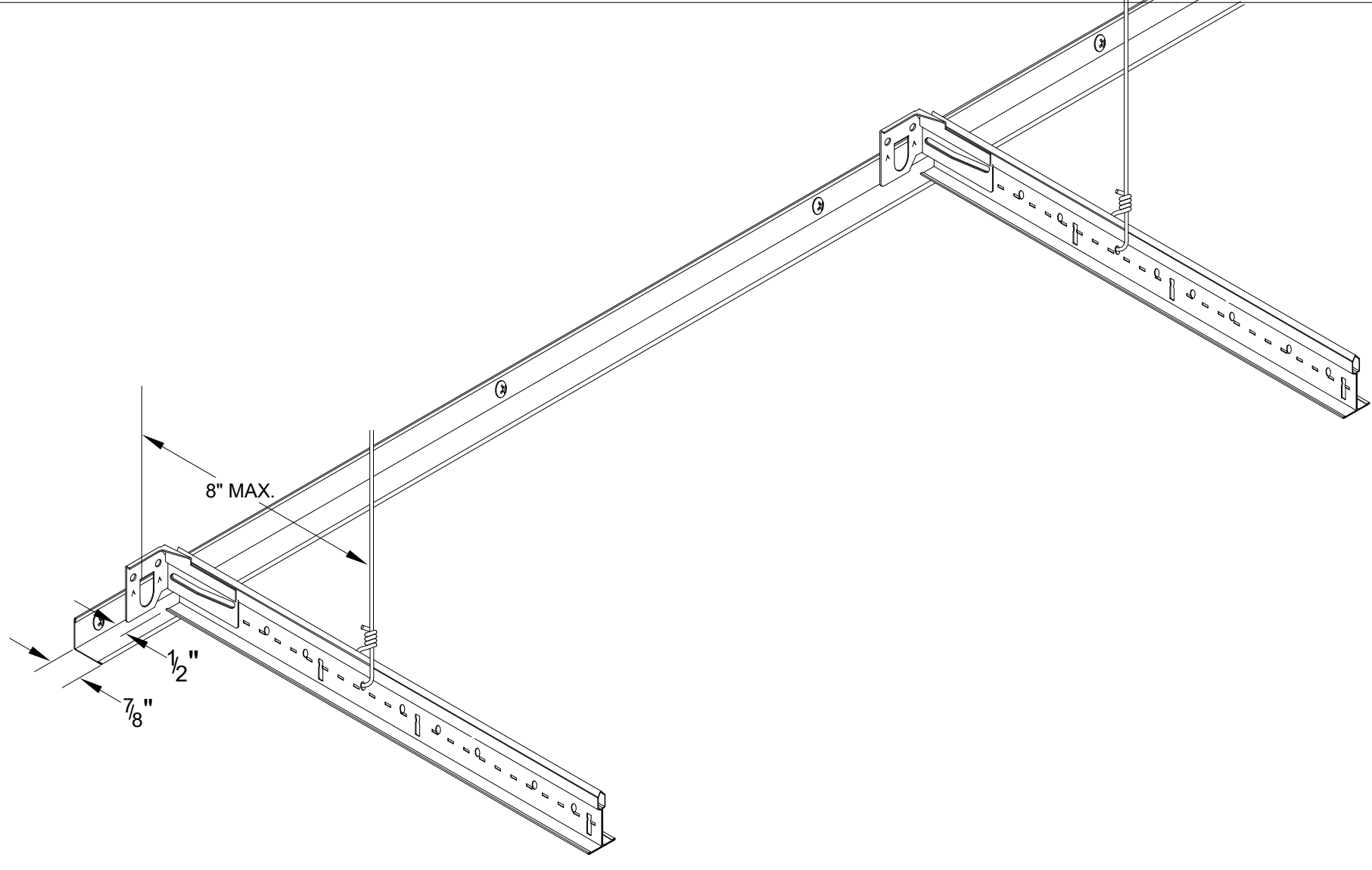
3/28/2024 8:33:07 AM C:\Users\kam2\Documents\LVES_kam297DL6W.rvt



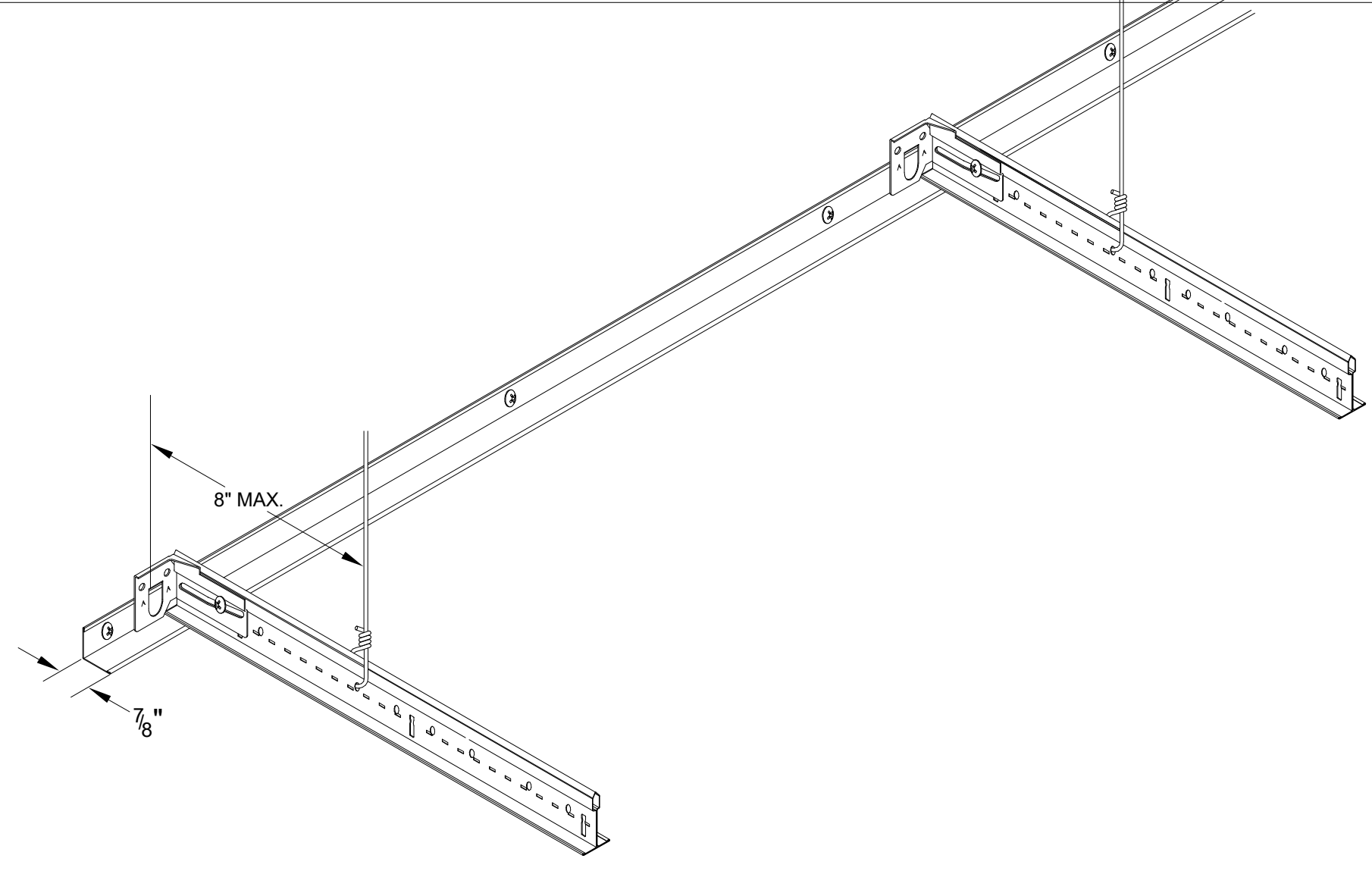
PERIMETER CLIP LAYOUT
SCALE: 1" = 1'-0" **14**



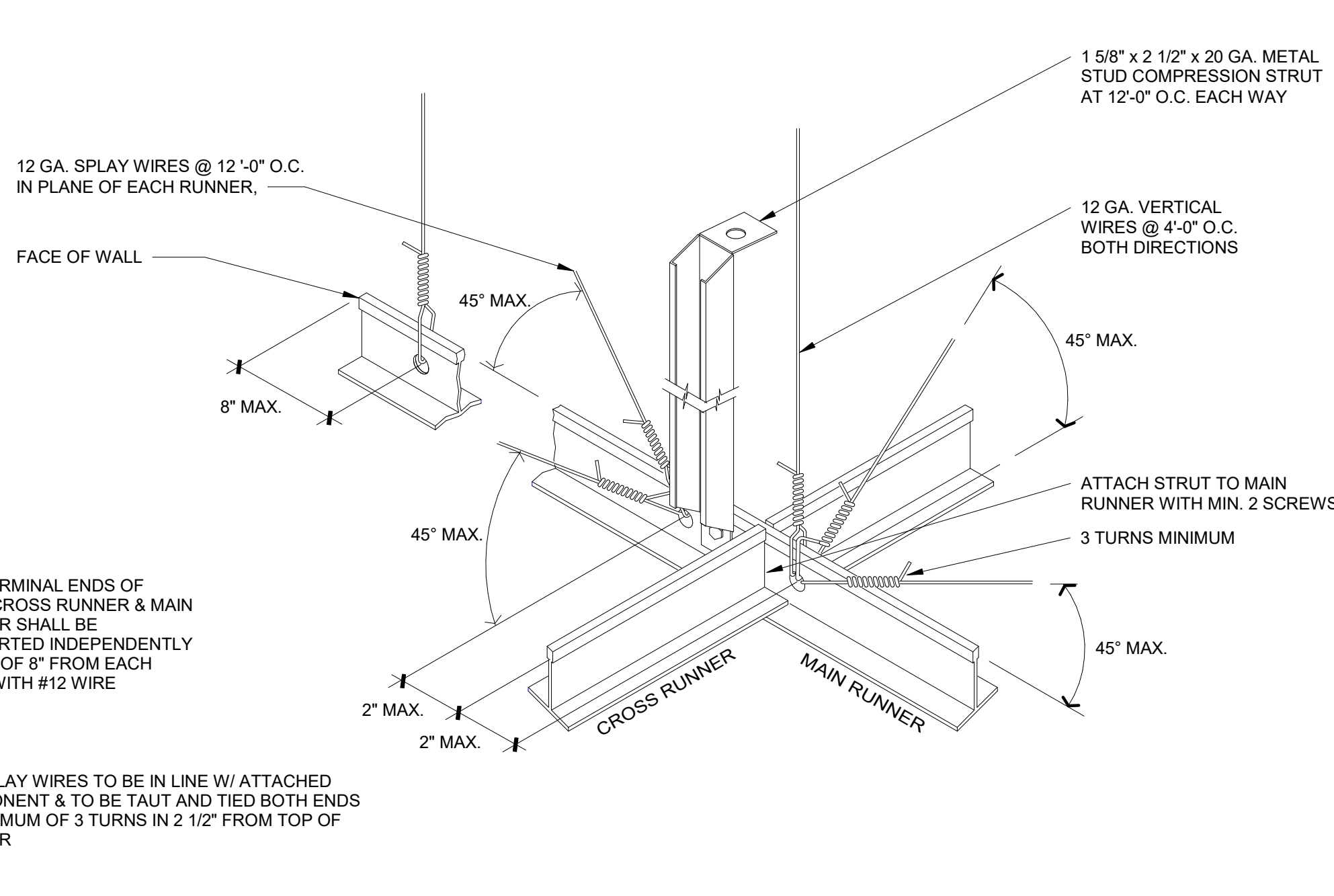
RECESSED LIGHT FIXTURE MOUNTING DETAIL
SCALE: 1" = 1'-0" **11**



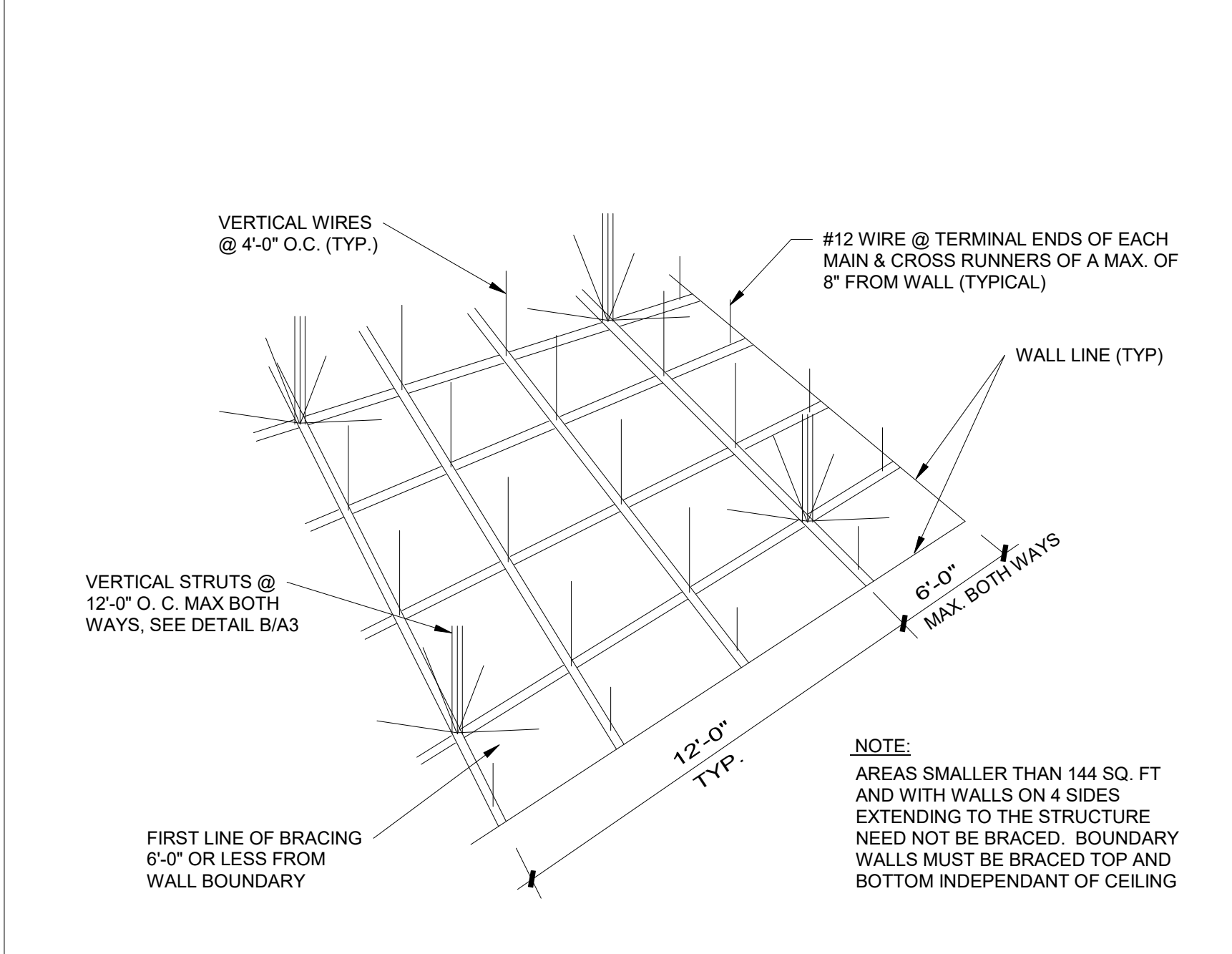
PERIMETER CLIP DETAIL @ UNATTACHED WALL
SCALE: 1" = 1'-0" **13**



PERIMETER CLIP DETAIL @ ATTACHED WALL
SCALE: 1" = 1'-0" **12**

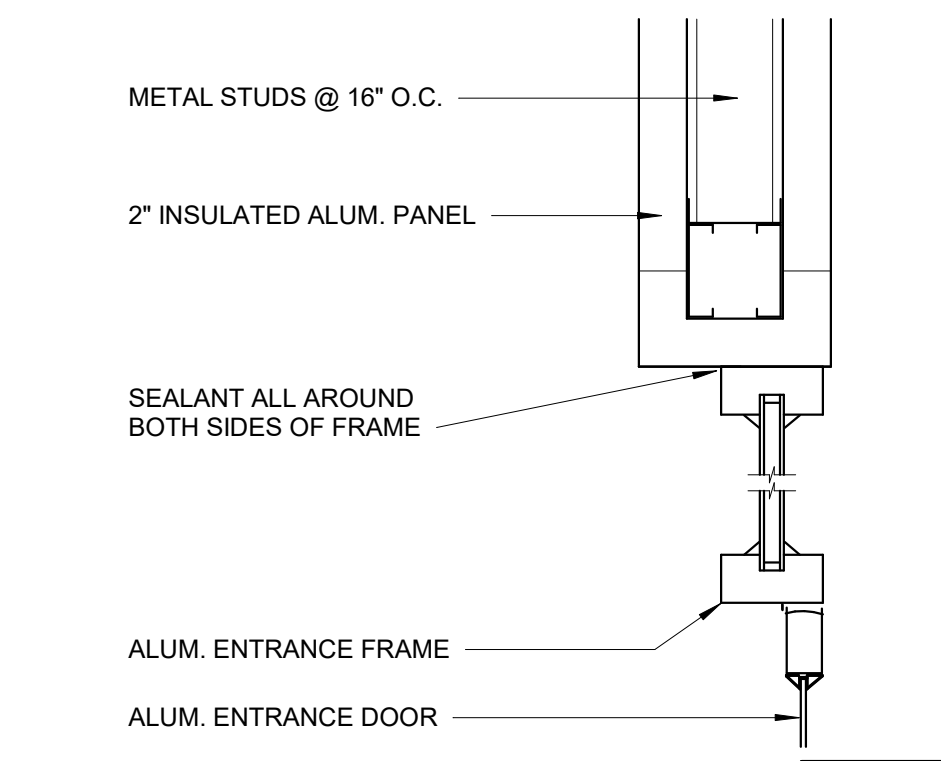


SEISMIC BRACING
SCALE: 1" = 1'-0" **10**

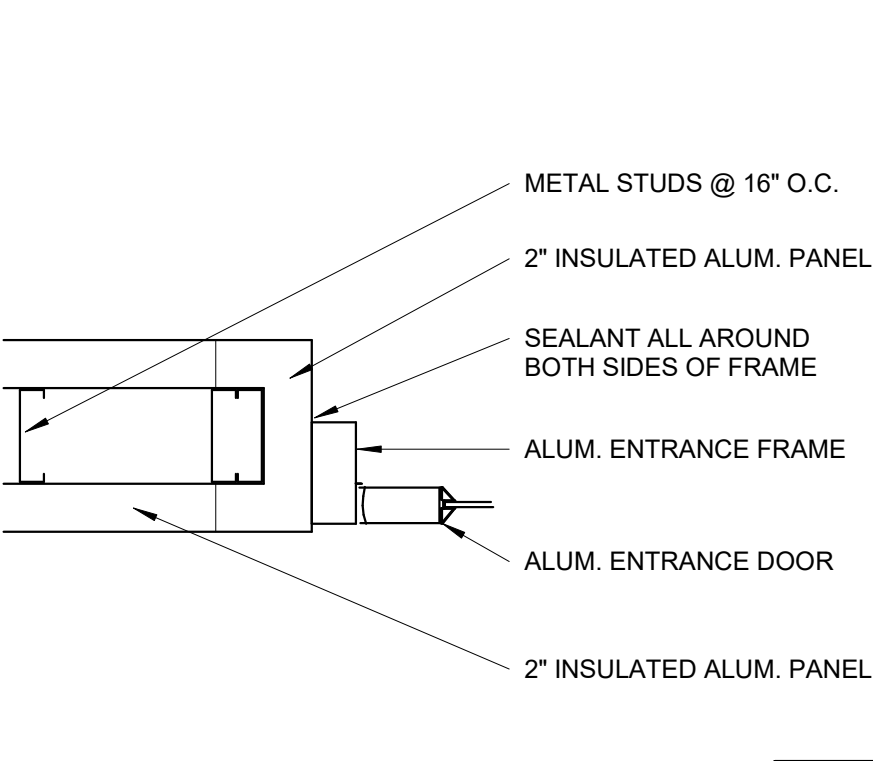


SEISMIC BRACING LAYOUT
SCALE: 1" = 1'-0" **9**

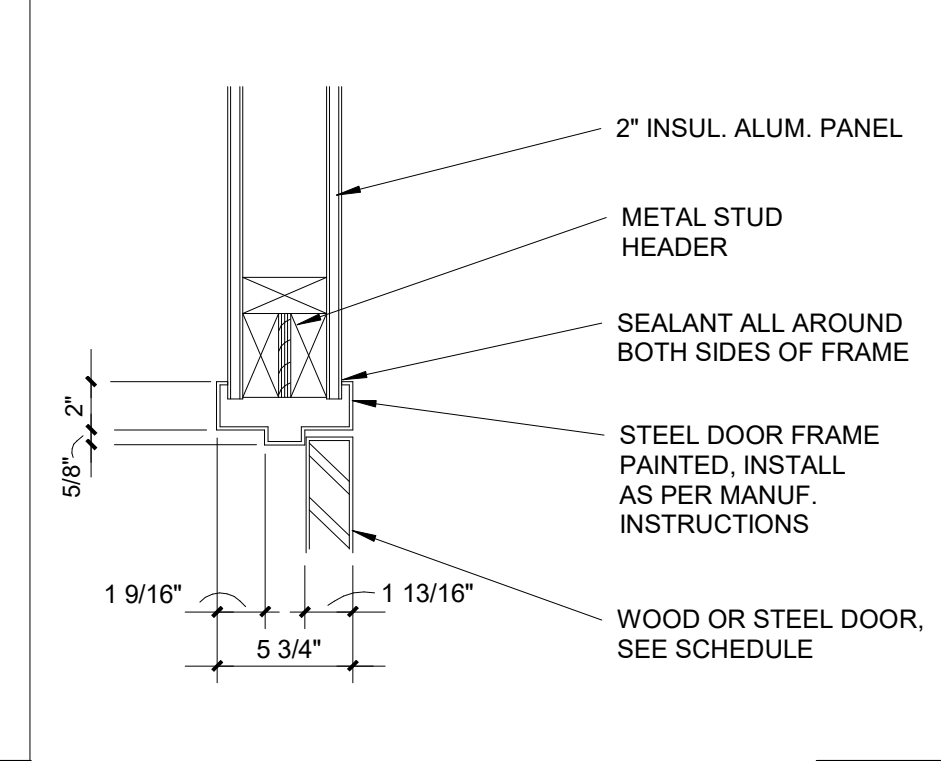
HARDWARE SCHEDULE		8
SCALE: NONE		



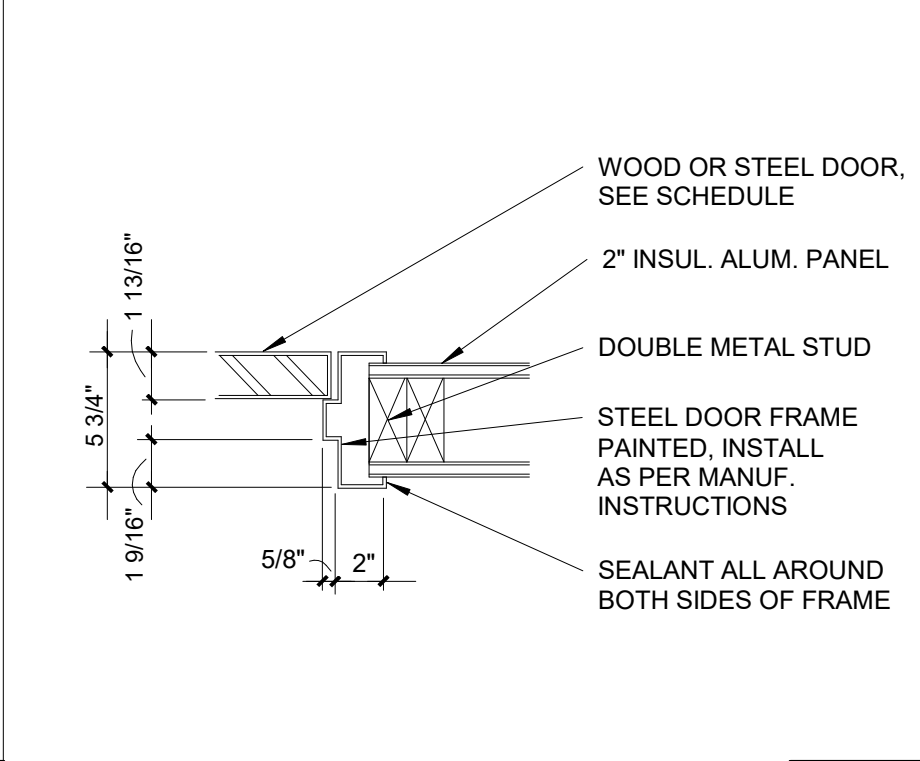
HEAD DETAIL
SCALE: 1 1/2" = 1'-0" **6**



JAMB DETAIL
SCALE: 1 1/2" = 1'-0" **5**

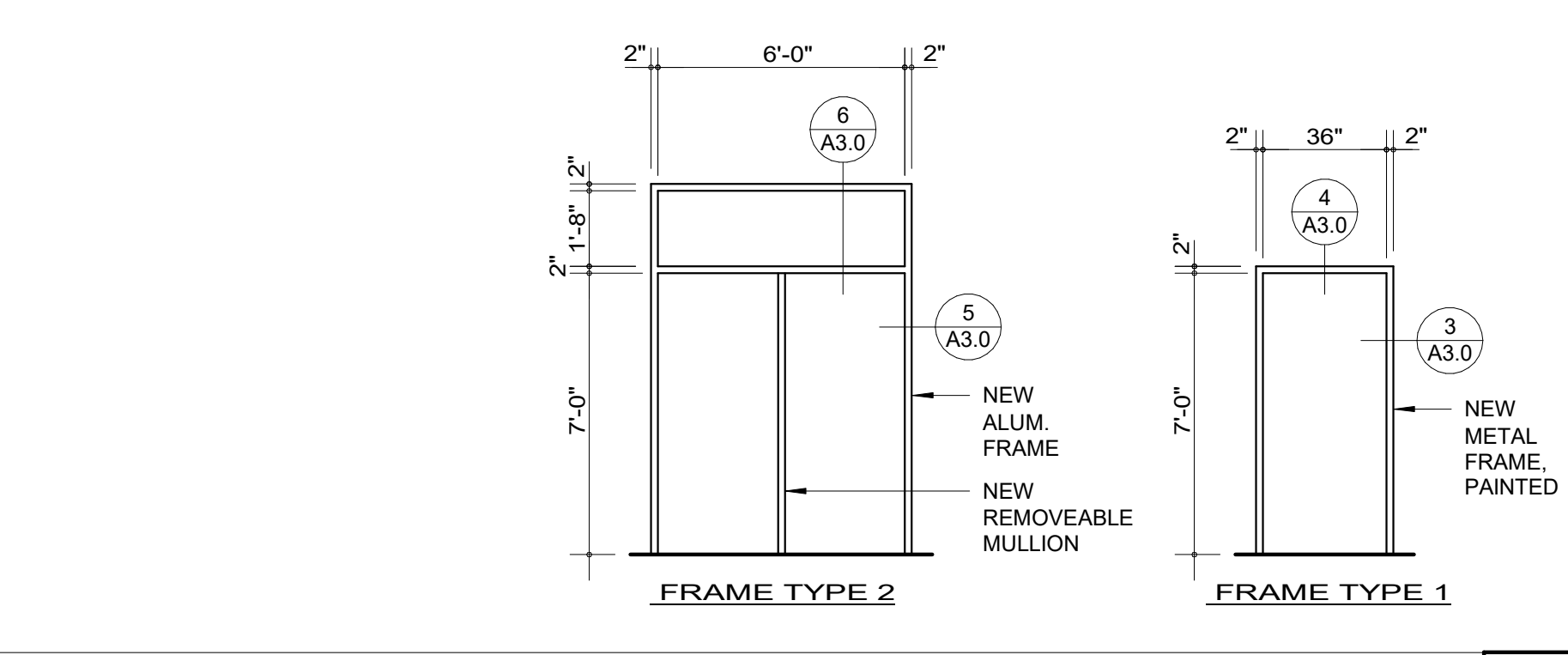


HEAD DETAIL
SCALE: 1 1/2" = 1'-0" **4**

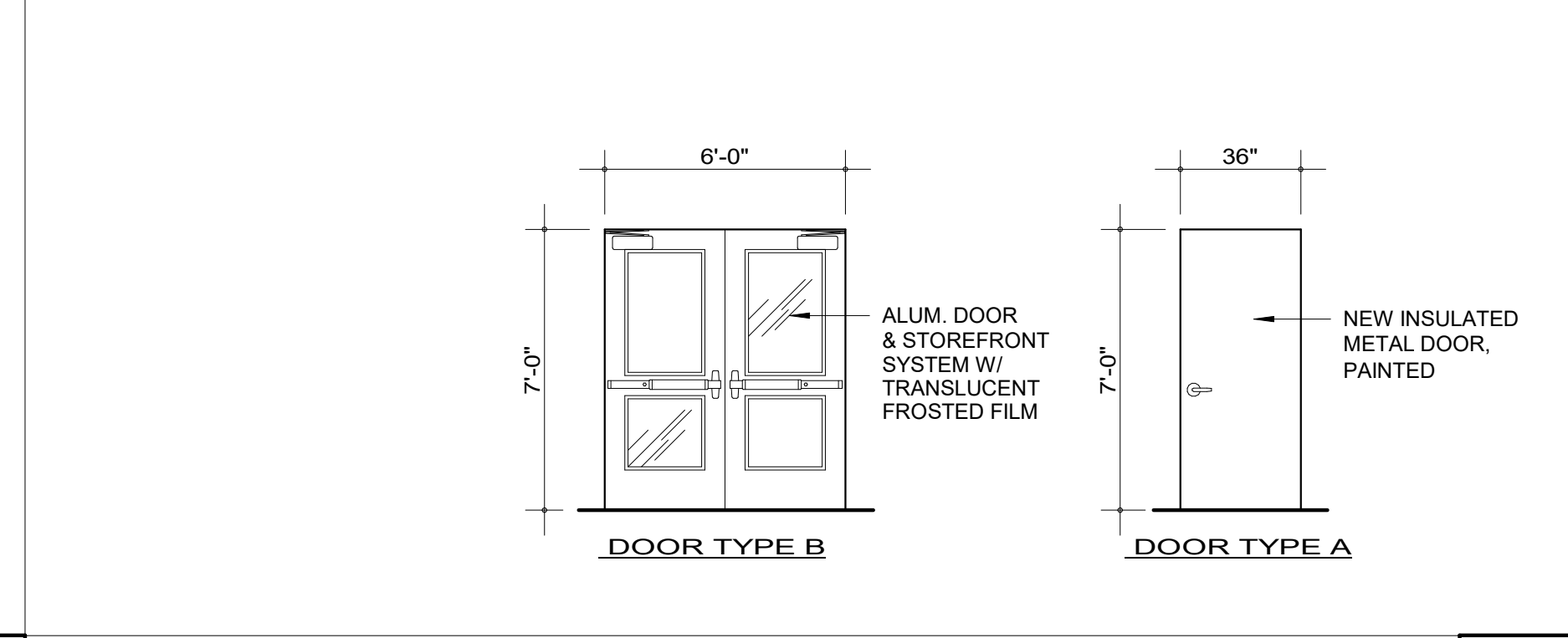


JAMB DETAIL
SCALE: 1 1/2" = 1'-0" **3**

DOOR SCHEDULE		7
SCALE: NONE		



FRAME TYPES
SCALE: 3/8" = 1'-0" **2**



DOOR TYPES
SCALE: 3/8" = 1'-0" **1**

REFERENCE NOTES



FACILITIES PLANNING
240 BRWB PROVO, UTAH 84602
PHONE: (801) 422-5504
FAX: (801) 422-0566

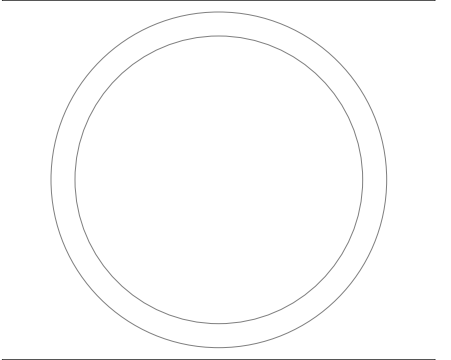
DATE: 03.28.2024
DESIGNER: K. MARTIN
DRAWN BY: FR

ADA CHECK:
CODE CHECK:
STRUCTURAL:
ENGINEERING:
PLANNING DIR:

CLIENT APPROVAL DATE

REVISIONS

BRIGHAM YOUNG
UNIVERSITY
ADD RESTROOMS TO CHAMPIONS TERRACE
ADVANCEMENT VP - ATHLETICS
LAVELL EDWARDS STADIUM (LVES) - LEVEL 3 NE CORNER

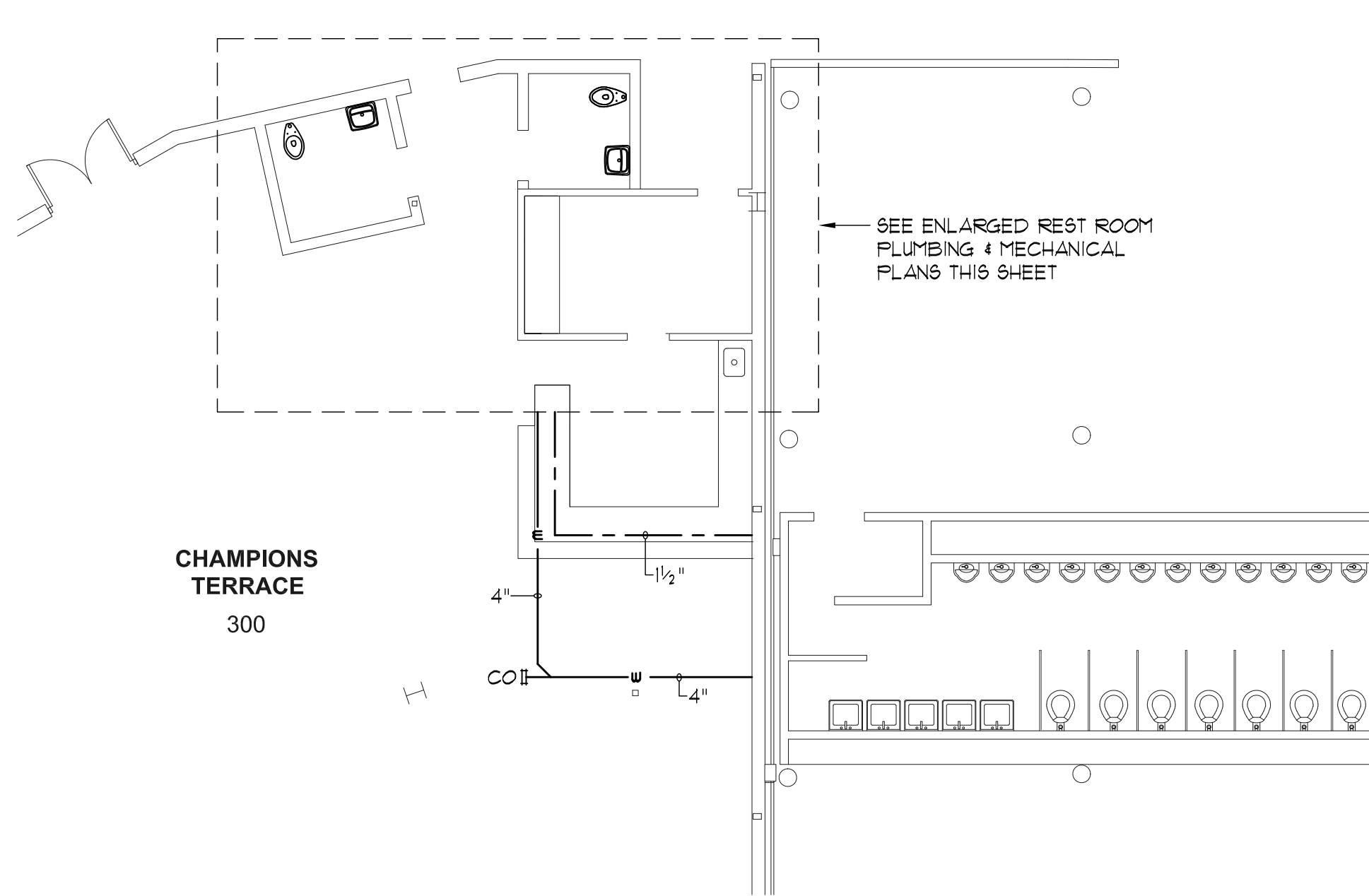


**DOOR, FRAME
TYPES, SCHEDULES
& DETAILS**

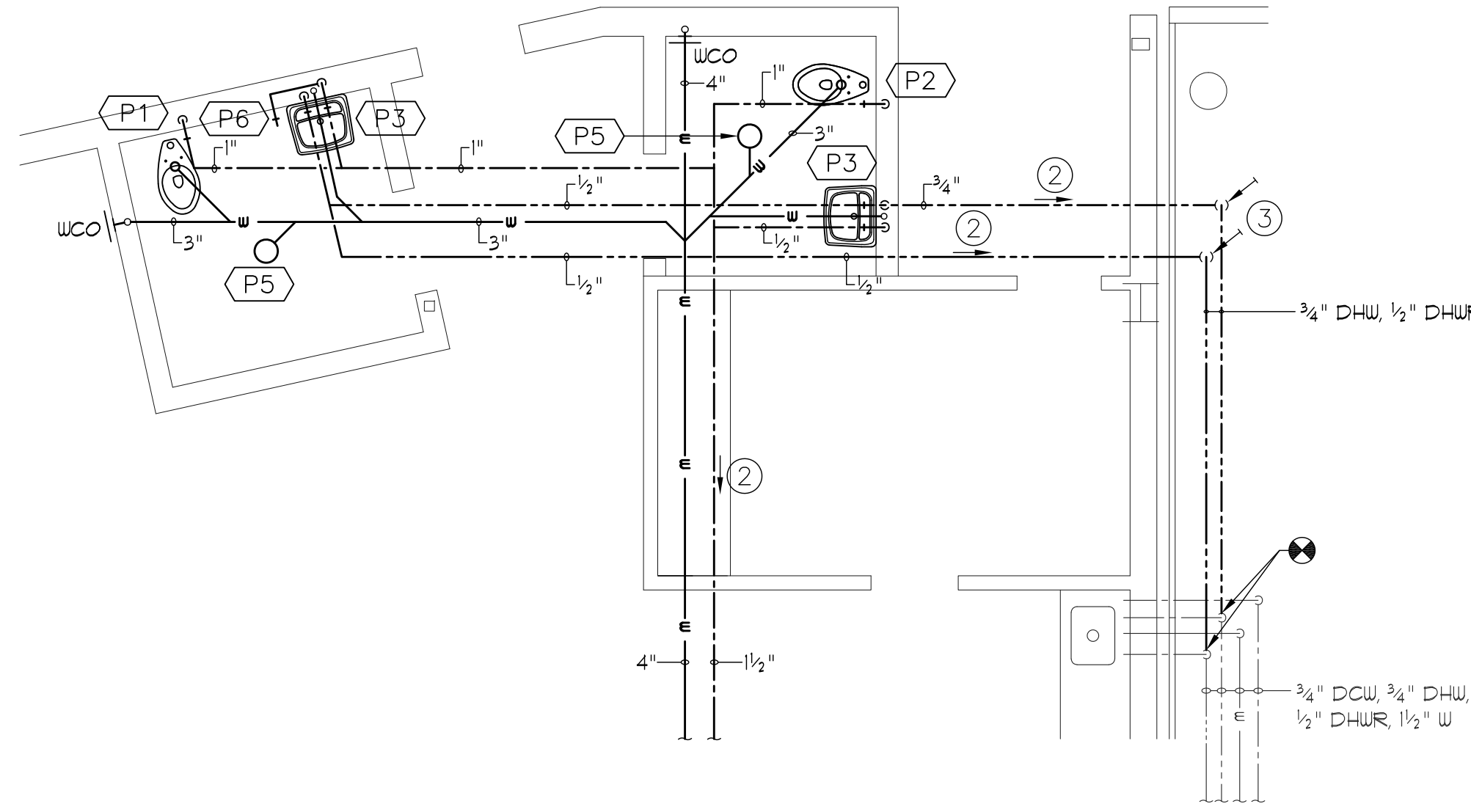
WORK ORDER & SHEET NO.

**N4639
A3.0**

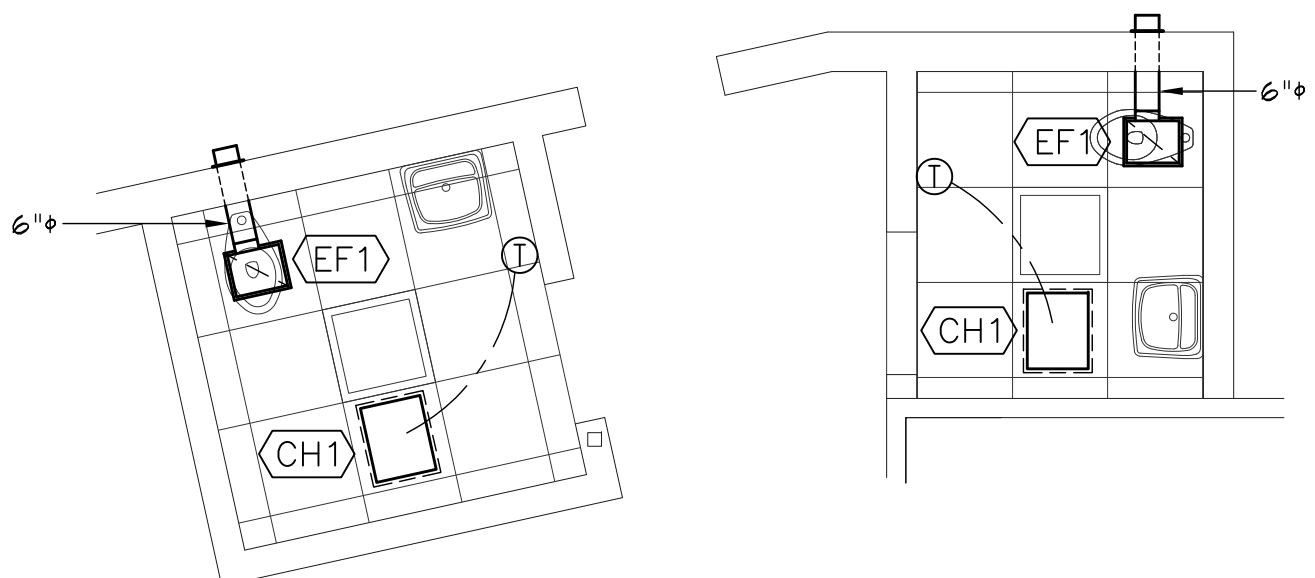
CONSTRUCTION DOCUMENTS



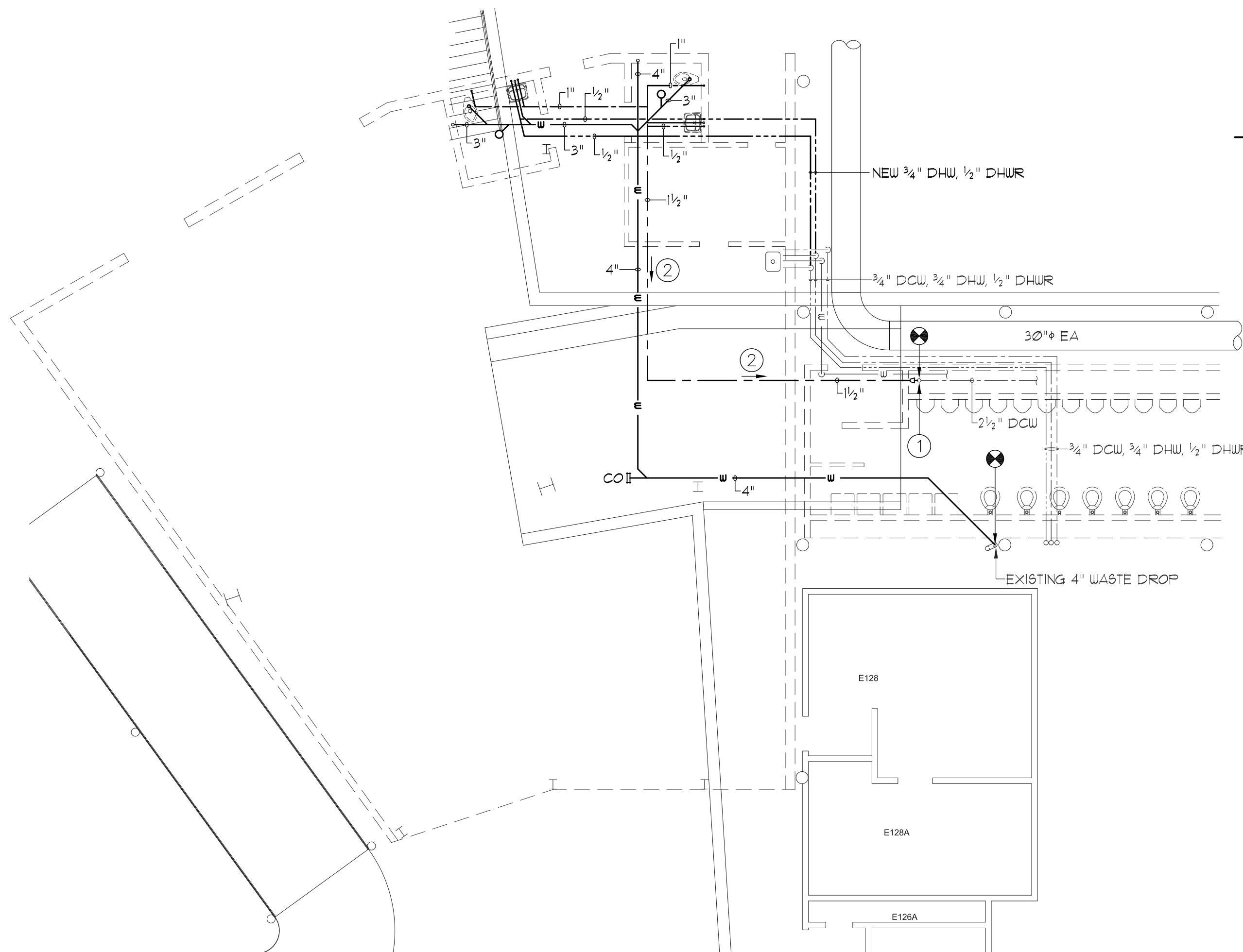
MEZZANNINE LEVEL PIPING PLAN
SCALE 1/8" = 1'-0"



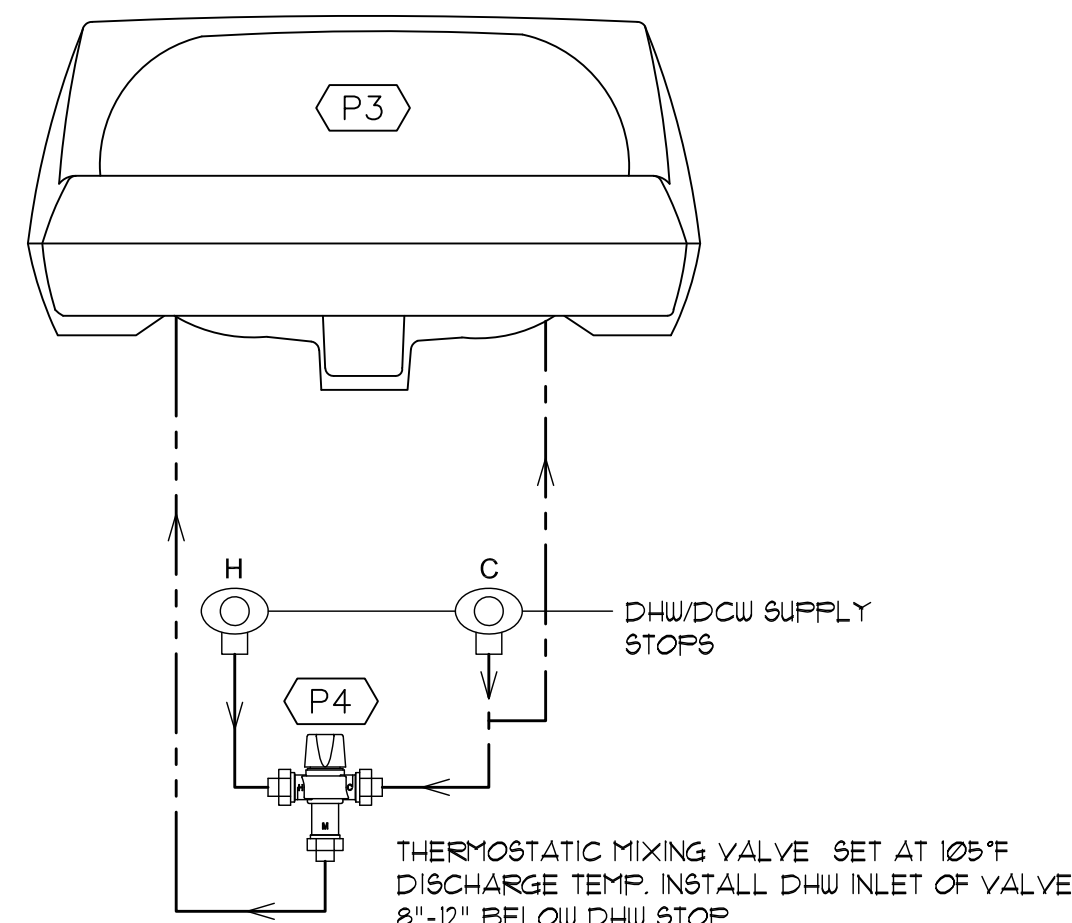
ENLARGED PLUMBING PLAN
SCALE 1/4" = 1'-0"



ENLARGED MECHANICAL PLAN
SCALE 1/4" = 1'-0"



GROUND LEVEL PIPING PLAN
SCALE 1/8" = 1'-0"



LAVATORY THERMOSTATIC MIXING VALVE DETAIL
SCALE NT5

KEYED REFERENCE NOTES

- 1 DISCONNECT EXISTING 2 1/2" DCW PIPE AT FLANGED CONNECTION. REPLACE 2 1/2" ELBOW WITH TEE AND RECONNECT PIPING AT FLANGE. REDUCE AT OTHER LEG OF TEE TO 1 1/2" AND CONNECT NEW 1 1/2" DCW TO NEW RESTROOMS.
- 2 GRADE NEW 1 1/2" DCW PIPING BACK TOWARD NEW CONNECTION AT MAIN A MINIMUM OF 1/8" PER FOOT TO ACCOMMODATE WINTERIZING DRAINAGE.
- 3 6" LONG DROPS WITH BALL VALVES FOR WINTERIZING DRAINAGE. TYPICAL 3/4" DHW AND 1/2" DHUR.
- 4 GRADE NEW 3/4" DHW & 1/2" DHUR PIPING BACK TOWARD DRAIN VALVES A MINIMUM OF 1/8" PER FOOT TO ACCOMMODATE WINTERIZING DRAINAGE.

GENERAL MECHANICAL NOTES

1. ALL NEW DCW/DHW PIPING SHALL BE COPPER TYPE K OR L UNLESS OTHERWISE NOTED.
2. ALL NEW OR REPAIRED PIPING SHALL BE INSULATED WITH 1" THICK, SNAP-ON PIPE INSULATION WITH A PVC VAPOR JACKET. FURNISH & INSTALL A PVC JACKET ON ALL FITTINGS.
3. INSULATE LAVATORY 1" TRAP WITH PREFORMED, SNAP-ON, REMOVABLE INSULATION TO MEET ADA REQUIREMENTS. USE TRUEBRO Mod. 102 w/ ACCESSORY 102 or EQUAL.
4. SLOPE ALL NEW DOMESTIC WATER PIPING TO DRAINAGE POINTS A MINIMUM OF 1/8" PER FOOT. FIELD VERIFY DRAINAGE POINTS WITH OWNER PRIOR TO INSTALLATION.

MECHANICAL EQUIPMENT SCHEDULE			
SYM	DESCRIPTION	MFG	CATALOG No.
EF1	CEILING EXHAUST FAN GALVANIZED STEEL HOUSING, CENTRIFUGAL DIRECT DRIVE FAN, ACOUSTICAL LINING, BACKDRAFT DAMPER, PLASTIC GRILLE, CAN BE SET TO 30, 110, OR 130 cfm. SET FAN TO 30 cfm, 115/1160, 15 WATTS, INTERNAL PLUG-IN TYPE DISCONNECT, VARIGREEN MOTOR WEIGHT: 12 lbs. ROUND HOODED WALL CAP - 6" INLET	GREENHECK or EQUAL	No. 9P-A90-130-VG
CH1	ELECTRIC CEILING MOUNTED HEATER RECESSED MOUNTING, GALVANIZED STEEL ENCLOSURE, UL LISTED, NON-GLOWING HEATING ELEMENT, ALUMINUM FAN BLADES, FAN DELAY SWITCH, THERMAL CUT-OUT, DISCONNECT SWITCH, LOUVERED FACEPLATE, SINGLE POLE THERMOSTAT, 5/120 btuh, 1500 WATT, 120/1/60, 12.5 A WEIGHT: 23 lbs. T-BAR MOUNTING FRAME KIT - DESIGNED TO MOUNT IN 2' x 2' GRID SINGLE POLE T-STAT - FIELD INSTALLED	QMARK or EQUAL	No. WC-6 No. EFF1500 No. EFFTBF No. EFFT1

PLUMBING FIXTURE SCHEDULE					
SYM	DESCRIPTION	MFG NO.	COLD/ INLET	HOT/ OUTLET	TRAP VENT
P1	WATER CLOSET FLOOR MOUNT, SIPHON JET FLUSHING ACTION, TOP SPUD, 1/6 GALLON FLUSH, 16 3/8" HIGH ELONGATED BOWL, 12" ROUGH-IN COLOR-WHITE SEAT "LUSTRA", SOLID PLASTIC, OPEN FRONT, WHITE MANUAL FLUSH VALVE - 1/6 GPF, PISTON ACTION, ANGLE STOP, VACUUM BREAKER, SPUD NUT AND ESCUTCHEON, SWEAT SOLDER KIT	KOHLER "HIGHCLIFF ULTRA" K-96051 KOHLER K-4610-CA TOTO No. TMTILN32CP	1 1/2"	-	3" 1 1/2"
P2	WATER CLOSET FLOOR MOUNT, SIPHON JET FLUSHING ACTION, TOP SPUD, 1/6 GALLON FLUSH, 16 3/8" HIGH ELONGATED BOWL, 12" ROUGH-IN COLOR-WHITE SEAT "LUSTRA", SOLID PLASTIC, OPEN FRONT, WHITE MANUAL FLUSH VALVE - 1/6 GPF, PISTON ACTION, ANGLE STOP, VACUUM BREAKER, SPUD NUT AND ESCUTCHEON, SWEAT SOLDER KIT	KOHLER "WELLCOMME ULTRA" K-96051 KOHLER K-4610-CA TOTO No. TMTILN32CP	1 1/2"	-	3" 1 1/2"
P3	LAVATORY - MEETS ADA REQUIREMENTS VITREOUS CHINA, 4" FAUCET CENTERS, DRILLED FOR CONCEALED CARRIER OFFSET DRAIN 3/8" ANGLE SUPPLIES w/ STOPS 1 1/4" CAST BRASS 1" TRAP MANUAL LAVATORY FIXTURE 4" CENTERSET, METAL WASTE	KOHLER "KINGSTON" K-2005 K-13885 K-1603-P K-8998 CHICAGO No. 802-317ABCP	1/2"	1/2"	1 1/4" 1 1/4"
P4	LAVATORY HOT WATER TEMPERING VALVE 050 gpm MIN. FLOW RATE, 60°F - 140°F, PRESSURE UP TO 125 psi, THERMAL MOTOR, TAMPER RESISTANT HANDLE, 3/8" COMPRESSION FITTINGS	SYMMONS "MAXLINE" No. T-210-CK	3/8"	3/8"	- -
P5	FLOOR DRAIN DUCO CAST IRON BODY, ADJUSTABLE NICKEL-BRONZE TOP, SECONDARY FLASHING FLANGE	JAY R SMITH No. 2005-A	-	-	2" 1 1/2"
P6	SILL COCK POLISHED CHROME PLATED BRASS, REMOVABLE TEE HANDLE, FNPT INLET, SLIP WALL FLANGE, IN-LINE VACUUM BREAKER, SLOW COMPRESSION CARTRIDGE	CHICAGO No. 381-E21CP	3/4"	-	- -



FACILITIES PLANNING
240 BRWB PROVO, UTAH 84602
PHONE: (801) 422-5504
FAX: (801) 422-0565

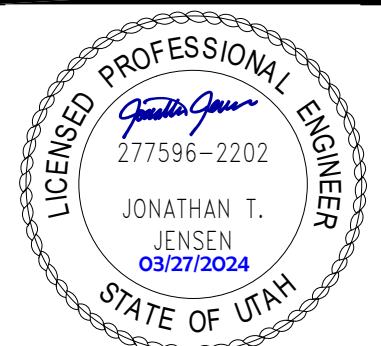
DATE: March 2024
DESIGNER: B. Holman
DRAWN BY: B. Holman

ADA CHECK:
CODE CHECK:
MECHANICAL:
STRUCTURAL:
PLANNING DIR:

CLIENT APPROVAL DATE

REVISIONS

BRIGHAM YOUNG UNIVERSITY
ADD RESTROOMS TO CHAMPIONS TERRACE
ADVANCEMENT VP - ATHLETICS
LAVELL EDWARDS STADIUM (LVES) - LEVEL 3 NE CORNER



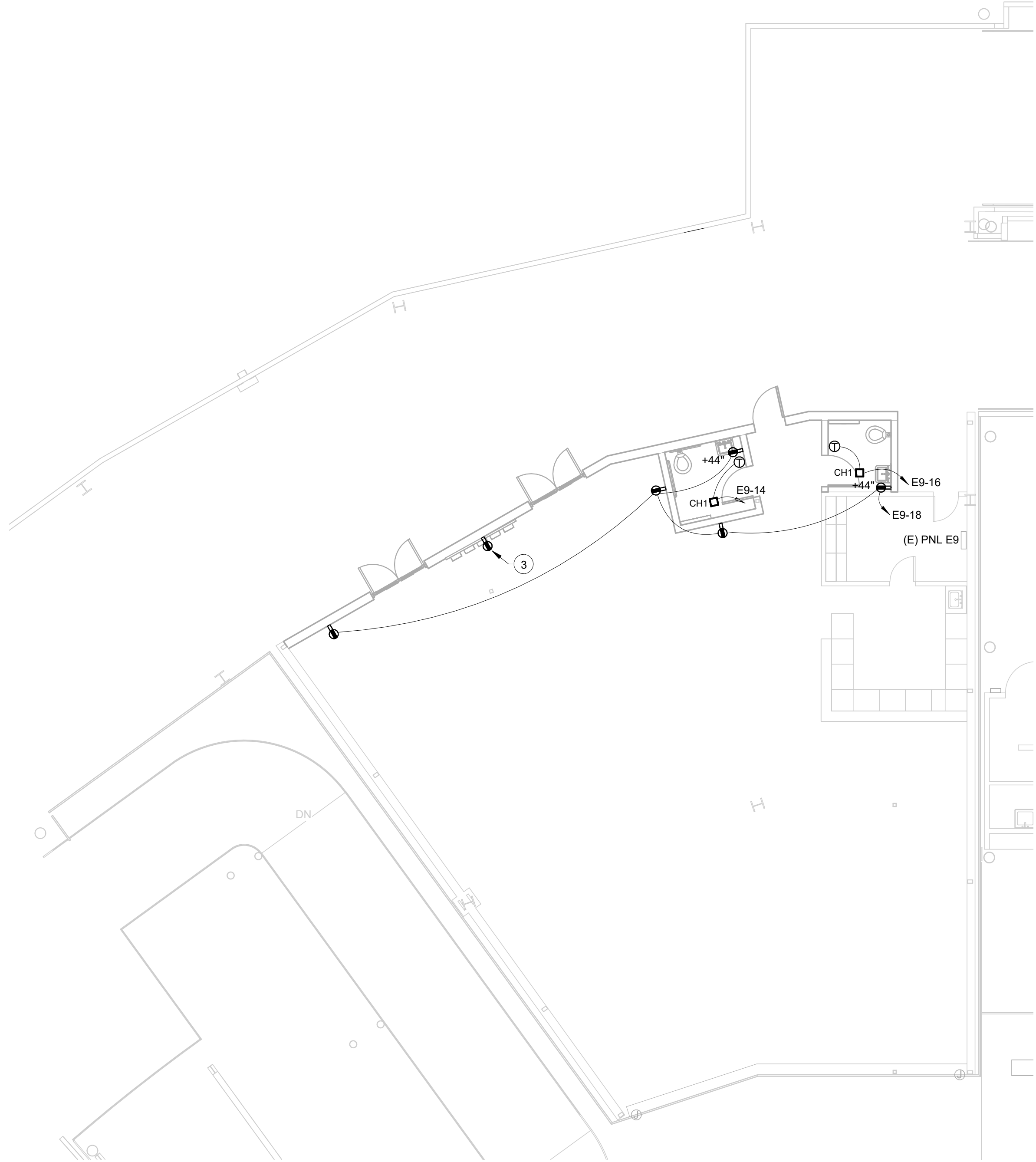
DEMOLITION & NEW
MECHANICAL PLANS
AND SCHEDULES

WORK ORDER & SHEET NO.

N4639
M1.0

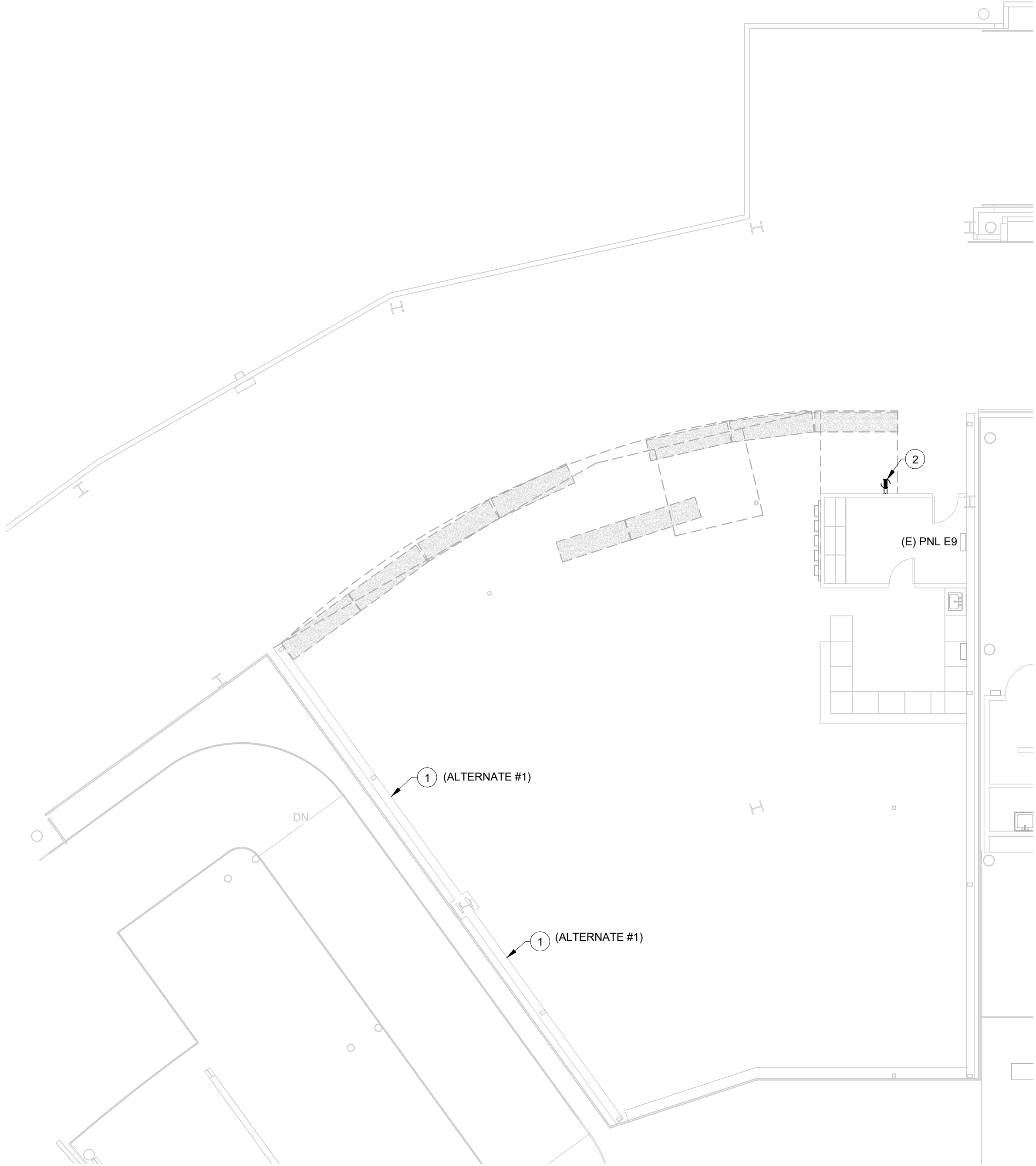
CONSTRUCTION DOCS - SHOPS

3/27/2024 3:14:24 PM C:\Users\sggriff\Documents\LVES_sggriff\CNX3.rvt



NEW POWER PLAN
SCALE: 1/8" = 1'-0"

2



DEMOLITION POWER PLAN
SCALE: 1/8" = 1'-0"

1

REFERENCE NOTES

- 1 RELOCATE JUNCTION BOXES MOUNTED TO TOP OF PARTITION WALL IN PREPARATION FOR EXTENDING WALL TO ROOF DECK. UTILIZE FLEXIBLE CONDUIT BETWEEN THE WALL AND ROOF DECK TO ACCOMMODATE POSSIBLE STRUCTURAL MOVEMENT.
- 2 DEMOLISH EXISTING RECEPTACLE AND ABANDONED CIRCUITING COMPLETE. MAINTAIN POWER TO DOWNLINE DEVICES.
- 3 SHOE DISPLAY. POWER FROM SWITCHED OVERHEAD LIGHTING CIRCUIT. MAKE CONNECTIONS TO DISPLAY AS REQUIRED TO CONCEAL CORD.



FACILITIES PLANNING

240 BRWB PROVO, UTAH 84602
PHONE: (801) 422-5504
FAX: (801) 422-0566

DATE: 03/27/2024
DESIGNER: SRG
DRAWN BY: SRG

ADA CHECK:
CODE CHECK:
STRUCTURAL:
ENGINEERING:
PLANNING DIR:

CLIENT APPROVAL DATE

REVISIONS

BRIGHAM YOUNG
UNIVERSITY
ADD RESTROOMS TO CHAMPIONS TERRACE
ADVANCEMENT VP - ATHLETICS
LAVELL EDWARDS STADIUM (LVES) - LEVEL 3 NE CORNER



DEMOLITION & NEW
POWER PLANS

WORK ORDER & SHEET NO.

N4639
E1.0

CONSTRUCTION DOCUMENTS

3/27/2024 3:14:30 PM C:\Users\sggriff\Documents\LVES_sggriff\7NX3.rvt



NEW LIGHTING PLAN
SCALE: 1/8" = 1'-0"

2



DEMOLITION LIGHTING PLAN
SCALE: 1/8" = 1'-0"

1

REFERENCE NOTES

- 1 REMOVE/SALVAGE EXISTING LINEAR PENDANT LUMINAIRE. PREPARE EXISTING CIRCUITING FOR CONNECTION TO NEW LUMINAIRES.
- 2 EXISTING TO REMAIN. SHOWN FOR REFERENCE ONLY.
- 3 REPLACE EXISTING DECORA STYLE DEVICES WITH STANDARD TOGGLE SWITCHES.
- 4 INSTALL NEW WATTSTOPPER DSW-301 OCCUPANCY SENSOR SWITCH.
- 5 CONNECT NEW LUMINAIRES TO EXISTING LIGHTING CIRCUIT.
- 6 INSTALL WATTSTOPPER ELCU-200 DEVICE. CONNECT TO EXISTING NORMAL POWER LIGHTING CIRCUIT, SWITCHED CIRCUIT, AND NEAREST EXISTING EM GENERATOR CIRCUIT.
- 7 TO EXISTING EM GENERATOR CIRCUIT.
- 8 INSTALL NEW CEILING-MOUNTED SPEAKER/STROBE DEVICE. CONNECT TO EXISTING NAC CIRCUIT VIA 3/4" C AND CAMPUS-STANDARD CABLING.



FACILITIES PLANNING
240 BRWB PROVO, UTAH 84602
PHONE: (801) 422-5504
FAX: (801) 422-0566

DATE: 03/27/2024
DESIGNER: SRG
DRAWN BY: SRG

ADA CHECK:
CODE CHECK:
STRUCTURAL:
ENGINEERING:
PLANNING DIR:

CLIENT APPROVAL DATE

REVISIONS

BRIGHAM YOUNG
UNIVERSITY
ADD RESTROOMS TO CHAMPIONS TERRACE
ADVANCEMENT VP - ATHLETICS
LAVELL EDWARDS STADIUM (LVES) - LEVEL 3 NE CORNER



DEMOLITION & NEW
LIGHTING PLANS

WORK ORDER & SHEET NO.

N4639
E1.1

CONSTRUCTION DOCUMENTS

