

Canyons School District

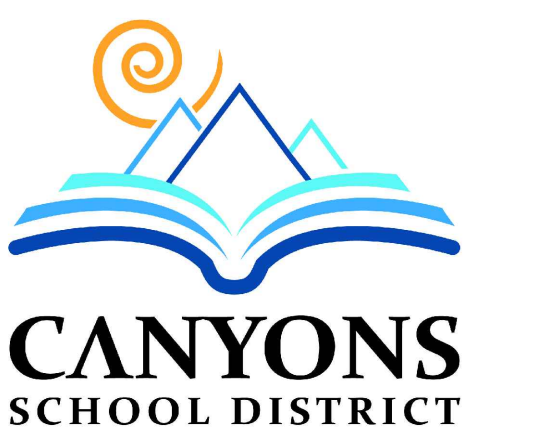
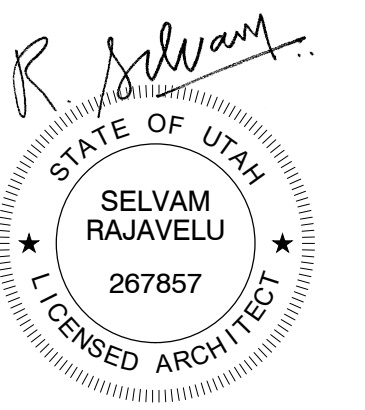
Albion Middle School

Science Classroom Remodel

2755 Newcastle Drive
Sandy, UT 84093



NJRA Architects, Inc.
5223 S. Ascension Way, Ste. 350
Murray, Utah 84123
801.364.9259
www.njraarchitects.com



ELECTRICAL SPECIFICATIONS

ELECTRICAL GENERAL PROVISIONS
DESCRIPTION OF WORK - EXTENT OF ELECTRICAL WORK IS INDICATED ON DRAWINGS. PROVIDE ALL LABOR, MATERIALS, EQUIPMENT, SUPERVISION AND SERVICE NECESSARY FOR A COMPLETE ELECTRICAL SYSTEM. WORK INCLUDES, BUT IS NOT NECESSARILY LIMITED TO THE FOLLOWING ITEMS:

- ELECTRICAL CONNECTIONS FOR EQUIPMENT
- GROUNDING
- CONDUIT RACEWAY
- CONDUCTORS AND CABLES
- ELECTRICAL BOXES AND FITTINGS
- SUPPORTING DEVICES
- WIRING DEVICES
- OVERCURRENT PROTECTIVE DEVICES
- MOTOR AND CIRCUIT DISCONNECTS
- LIGHT FIXTURES
- ELECTRICAL IDENTIFICATION
- TELECOMMUNICATIONS
- INTERCOM
- FIRE ALARM AND DETECTION SYSTEMS

VISIT THE SITE DURING THE BIDDING PERIOD TO DETERMINE EXISTING CONDITIONS AFFECTING ELECTRICAL AND OTHER WORK. ALL COSTS ARISING FROM SITE CONDITIONS AND/OR PREPARATION SHALL BE INCLUDED IN THE BASE BID. NO ADDITIONAL CHARGES WILL BE ALLOWED DUE TO INADEQUATE SITE INSPECTION.

QUALITY ASSURANCE - PERFORM WORK IN ACCORDANCE WITH THE NATIONAL ELECTRICAL CODE (NEC), COMPLY WITH REQUIREMENTS OF STATE AND LOCAL ORDINANCES. OBTAIN ALL PERMITS, INSPECTIONS, ETC. FROM AUTHORITY HAVING JURISDICTION (AHJ). EMPLOY ONLY QUALIFIED CRAFTSMEN WITH AT LEAST THREE YEARS OF EXPERIENCE. WORKMANSHIP SHALL BE NEAT, HAVE A GOOD MECHANICAL APPEARANCE AND CONFORM TO BEST ELECTRICAL STATE CONTRACTING LICENSE. PROVIDE EQUIPMENT AND MATERIAL THAT ARE UNDERWRITERS LABORATORIES INC. (UL) LISTED AND LABELED.

SUBMITTALS - AFTER THE CONTRACT IS AWARDED BUT PRIOR TO MANUFACTURE OR INSTALLATION OF ANY EQUIPMENT, PREPARE COMPLETE SHOP DRAWINGS.

- PROVIDE SUBMITTALS IN PORTABLE DOCUMENT FORMAT (PDF).
- DOCUMENTS MUST BE ELECTRONICALLY BOOKMARKED AND KEYWORD SEARCHABLE USING ADOBE ACROBAT (HTTP://WWW.ADOBE.COM/ACROBAT) OR BLUEBEAM REVU (HTTP://WWW.BLUEBEAM.COM) FOR EACH RELEVANT SECTION. (I.E. INCLUDE ELECTRONIC BOOKMARKS SEPARATING "LIGHT FIXTURES" FROM "PANELBOARDS")
- ELECTRONICALLY HIGHLIGHT ALL OPTIONS FOR LIGHT FIXTURES, ELECTRICAL EQUIPMENT, ETC. MANUAL HIGHLIGHTING AND SCANNING OF THE DOCUMENTS IS NOT ACCEPTABLE AND WILL NOT BE REVIEWED.
- PROVIDE ONLY COMPLETED CUTSHEETS FOR ALL FIXTURE AND EQUIPMENT TYPES. BLANK CUTSHEETS SUBMITTED WITH A SCHEDULE ARE NOT ACCEPTABLE AND WILL NOT BE REVIEWED.
- A MAXIMUM OF ONE SUBMITTAL PER SPECIFICATION SECTION IS ALLOWED. IT IS NOT ACCEPTABLE TO PROVIDE A PRODUCT BY PRODUCT SUBMITTAL. SINGLE PRODUCT BY PRODUCT SUBMITTALS WILL NOT BE REVIEWED.

- WIRING DEVICES
- PANELBOARDS
- OVERCURRENT PROTECTION DEVICES
- MOTOR AND CIRCUIT DISCONNECTS
- LIGHT FIXTURES
- LIGHTING CONTROLS
- ELECTRICAL IDENTIFICATION
- TELECOMMUNICATIONS
- INTERCOM
- FIRE ALARM AND DETECTION SYSTEMS

RECORD DRAWINGS - MAINTAIN ON A DAILY BASIS, A COMPLETE SET OF RECORD DRAWINGS, REFLECTING AN ACCURATE DIMENSIONAL RECORD OF ALL BURIED OR CONCEALED WORK. MARK RECORD DRAWINGS TO SHOW THE PRECISE LOCATION OF CONCEALED WORK AND EQUIPMENT, INCLUDING CONCEALED OR EMBEDDED CONDUIT AND JUNCTION BOXES AND ALL CHANGES AND DEVIATIONS IN THE WORK FROM THAT SHOWN ON THE CONTRACT DOCUMENTS.

OPERATION AND MAINTENANCE MANUALS - PROVIDE OPERATING INSTRUCTION AND MAINTENANCE DATA BOOKS FOR ALL EQUIPMENT AND MATERIALS FURNISHED UNDER THIS DIVISION.

GUARANTEE - ENSURE THAT ELECTRICAL SYSTEMS INSTALLED UNDER THIS CONTRACT IS IN PROPER WIRING ORDER AND IN COMPLIANCE WITH DRAWINGS, SPECIFICATIONS, AND/OR AUTHORIZED CHANGES. WITHOUT ADDITIONAL CHARGE, REPLACE ANY WORK OR MATERIALS WHICH DEVELOP DEFECTS, EXCEPT FROM ORDINARY WEAR AND TEAR, WITHIN ONE YEAR FROM THE DATE OF SUBSTANTIAL COMPLETION.

FIRE PROTECTION SEALS - SEAL ALL PENETRATIONS FOR WORK OF THIS SECTION THROUGH FIRE RATED FLOORS, WALLS, AND CEILINGS TO PREVENT THE SPREAD OF SMOKE, FIRE, TOXIC GAS, OR WATER THROUGH THE PENETRATION EITHER BEFORE, DURING AND AFTER FIRE.

POWER OUTAGES - ALL POWER OUTAGES REQUIRED FOR EXECUTION OF THIS WORK SHALL OCCUR DURING THE NON-STANDARD WORKING HOURS AND AT THE CONVENIENCE OF THE OWNER. INCLUDE ALL COSTS FOR OVERTIME WORK IN BID.

ELECTRICAL CONNECTION FOR EQUIPMENT

- VERIFY EXACT LOAD AND LOCATION OF ALL EQUIPMENT BEFORE ROUGH-IN FOR EACH ELECTRICAL CONNECTION. PROVIDE COMPLETE ASSEMBLY OF MATERIAL, INCLUDING BUT NOT NECESSARILY LIMITED TO, RACEWAYS, CONDUCTORS, CORDS, CORD CAPS, PLUGS, WIRING DEVICES, PRESSURE CONNECTORS, TERMINALS (LUGS), ELECTRICAL INSULATING TAPE, HEAT-SHRINKABLE INSULATING TUBING, CABLE TIES, SOLDERLESS WIRE NUTS, AND OTHER ITEMS AND ACCESSORIES AS NEEDED TO COMPLETE SPLICES, TERMINATIONS, AND CONNECTIONS AS REQUIRED. FOR PERMANENTLY INSTALLED FIXED EQUIPMENT, PROVIDE FLEXIBLE SEAL-TITE CONNECTION. FOR MOVABLE AND/OR PORTABLE EQUIPMENT, PROVIDE WIRING DEVICE, CORD CAP, AND MULTI-CONDUCTOR CORD.

GROUNDING

- PROVIDE GROUNDING AND BONDING OF ALL ELECTRICAL AND COMMUNICATION APPARATUS, MACHINERY, APPLIANCES, BUILDING COMPONENTS, AND ITEMS REQUIRED BY THE NEC TO PROVIDE A PERMANENT, CONTINUOUS LOW IMPEDANCE, GROUNDING SYSTEM. PROVIDE AN NEC BONDING/GROUNDING CONDUCTOR IN ALL RACEWAYS USED FOR POWER DISTRIBUTION.

CONDUIT RACEWAYS

- PROVIDE METAL CONDUIT, TUBING, AND FITTINGS OF TYPES, GRADES, SIZES, AND WEIGHTS (WALL THICKNESS) AS REQUIRED, WITH MINIMUM TRADE SIZE OF 3/4". INSTALL ELECTRICAL RACEWAY SYSTEMS IN ACCORDANCE WITH MANUFACTURER'S WRITTEN INSTRUCTIONS AND APPLICABLE REQUIREMENTS OF NEC AND NECA "STANDARD OF INSTALLATION" IN ACCORDANCE WITH THE FOLLOWING:
 - FEEDERS - INSTALL FEEDERS RATED 100 AMPS AND GREATER IN ELECTRICAL METALLIC CONDUIT (EMT), WHERE BURIED BELOW GRADE, INSTALL IN CONCRETE ENCASED NON-METALLIC CONDUIT OR DUCT (SCHEDULE 40 PVC).
 - BRANCH CIRCUITS, AND INDIVIDUAL EQUIPMENT CIRCUITS RATED LESS THAN 100 AMPS, INSTALL IN ELECTRICAL METALLIC TUBING (EMT), WHERE LOCATED IN POURED WALLS, BELOW CONCRETE SLAB-ON-GRADE, OR IN EARTH FILL, INSTALL IN NON-METALLIC PLASTIC DUCT (SCHEDULE 40 PVC), ENCASE NON-METALLIC PLASTIC DUCT 1-1/4" AND LARGER IN CONCRETE.
 - PROVIDE RIGID METAL CONDUIT (RMC) FOR ALL BENDS IN BURIED CONDUIT GREATER THAN 30 DEGREES. PROVIDE PROTECTIVE COATING FOR RIGID METAL CONDUIT BENDS. INSTALL FLEXIBLE CONDUIT FOR CONNECTIONS OF MOTORS, TRANSFORMERS, AND OTHER ELECTRICAL EQUIPMENT WHERE SUBJECT TO MOVEMENT AND VIBRATIONS. PROVIDE OZ. EXPANSION FITTINGS ON ALL CONDUITS CROSSING BUILDING EXPANSION JOINTS, BOTH IN SLAB AND SUSPENDED.
 - PROVIDE SURFACE RACEWAYS OF SIZES AND CHANNELS INDICATED. PROVIDE FITTINGS THAT MATCH AND MATE WITH RACEWAY.

CONDUCTORS AND CABLES

- PROVIDE FACTORY-FABRICATED CONDUCTORS FOR SIZED, RATINGS, MATERIAL, AND TYPES INDICATED FOR EACH SERVICE. PROVIDE COPPER CONDUCTORS, WITH THIN/THW INSULATION. SIZE ALL CONDUCTORS IN ACCORDANCE WITH NEC; MINIMUM SIZE TO BE #12 AWG. PROVIDE STRANDED CONDUCTORS FOR #8 AWG AND LARGER.

ELECTRICAL BOXES AND FITTINGS

- PROVIDE ONE PIECE GALVANIZED FLAT ROLLED SHEET STEEL INTERIOR OUTLET WIRING BOXES, CORROSION-RESISTANT CAST-METAL WEATHERPROOF OUTLET WIRING BOXES, CODE-GAGE SHEET STEEL JUNCTIONS AND PULL BOXES, CAST-IRON WATERPROOF ADJUSTABLE FLOOR BOXES, GALVANIZED CAST-METAL CONDUIT BODIES, CORROSION-RESISTANT PUNCHED-STEEL BOX KNOCKOUT CLOSURES, CONDUIT LOCKOUTS AND MALLEABLE STEEL CONDUIT BUSHINGS AND OFFSET CONNECTORS, AND ALL ACCESSORIES AS REQUIRED TO SUIT EACH RESPECTIVE LOCATION AND INSTALLATION. FASTEN BOXES RIGIDLY TO SUBSTRATES OR STRUCTURAL SURFACES TO WHICH ATTACHED, OR SOLIDLY EMBED ELECTRICAL BOXES IN CONCRETE OR MASONRY. USE BAR HANGERS FOR STUD CONSTRUCTION.

SUPPORTING DEVICES

- PROVIDE SUPPORTS, ANCHORS, SLEEVES AND SEALS AS REQUIRED FOR A COMPLETE RACEWAY SUPPORT SYSTEM, INCLUDING BUT NOT LIMITED TO: CLEVIS HANGERS, RISER CLAMPS, C-CLAMPS, BEAM CLAMPS, ONE AND TWO HOLE CONDUIT STRAPS, OFFSET CONDUIT CLAMPS, EXPANSION ANCHORS, TOGGLE BOLTS, THREADED RODS, U-CHANNEL STRUT SYSTEM, AND ALL ASSOCIATED ACCESSORIES. INSTALL IN ACCORDANCE WITH MANUFACTURER'S WRITTEN INSTRUCTIONS AND WITH RECOGNIZED INDUSTRY PRACTICES TO INSURE SUPPORTING DEVICES COMPLY WITH REQUIREMENTS. PROVIDE RIGID ATTACHMENT OF ALL FLOOR MOUNTED EQUIPMENT TO THE FLOOR SLAB OR STRUCTURAL SYSTEM.

ELECTRICAL SEISMIC CONTROL

- PROVIDE SEISMIC CONTROL EQUIPMENT INCLUDING BUT NOT LIMITED TO: VIBRATION ISOLATORS, FLEXIBLE CONNECTIONS, RIGID STEEL FRAMES, ANCHORS, INSERTS AND ATTACHMENTS, SEISMIC SNUBBER AND BRACING TO MEET THE SEISMIC REQUIREMENTS FOR THE PROJECT SITE.

WIRING DEVICES

- PROVIDE GRADE FACTORY-FABRICATED WIRING DEVICES, IN TYPES, AND ELECTRICAL RATINGS FOR APPLICATIONS INDICATED AND COMPLYING WITH

TO MATCH. PROVIDE GREY COLORED DEVICES OR AS SELECTED BY ARCHITECT.

OVERCURRENT PROTECTIVE DEVICES

- PROVIDE OVERCURRENT PROTECTIVE DEVICES OF THE SAME MANUFACTURER AS THE EXISTING SWITCHBOARD AND/OR PANELBOARD MANUFACTURER. PROVIDE FACTORY-ASSEMBLED DEVICES OF AMPERAGE, VOLTAGE, AND RMS INTERRUPTING RATING SHOWN. PROVIDE DEVICES AS FOLLOWS:
 - MOLDED CASE THERMAL TRIP CIRCUIT BREAKERS:
 - PROVIDE FACTORY-ASSEMBLED BOLT-ON MOLDED CASE CIRCUIT BREAKERS WITH PERMANT TRIP AND ADJUSTABLE INSTANTANEOUS MAGNETIC TRIP IN EACH POLE. SERIES RATING IS NOT ACCEPTABLE. CONSTRUCT BREAKERS FOR MOUNTING AND OPERTING IN ANY PHYSICAL POSITION AND IN AN AMBIENT TEMPERATURE OF 40 DEGREES C.
 - CIRCUIT BREAKERS 15 AMPS THROUGH 599 AMPS SHALL BE MOLDED CASE SOLID-STATE CIRCUIT BREAKERS.

LIGHTING FIXTURES

- PROVIDE LIGHTING FIXTURES COMPLETE WITH ALL COMPONENTS FOR EACH SIZE, TYPE, AND RATING INDICATED. THIS INCLUDES, BUT NOT LIMITED TO HOUSING, DRIVER, REFLECTORS, AND WIRING. SIZE FUSES PER BALLAST MANUFACTURER'S RECOMMENDATION. PROVIDE ALL NECESSARY SUPPORTS, BRACKETS, AND MISCELLANEOUS EQUIPMENT FOR MOUNTING OF FIXTURES. SUPPORT ALL GRID MOUNTED FIXTURES FROM THE BUILDING STRUCTURE WITH #12 GA. STEEL WIRE ATTACHED TO EACH CORNER, INDEPENDENT OF THE CEILING SYSTEM. PROVIDE BACKING SUPPORTS. PROVIDE GYPSUM BOARD PROTECTION AS REQUIRED TO MAINTAIN FIRE RATING OF EACH CEILING IN WHICH FIXTURES ARE INSTALLED. PROVIDE ALL EXTERIOR FIXTURES WITH DAMP OR WET LOCATION LABEL AS REQUIRED BY APPLICATION. PROVIDE CLASS 2 WIRING FOR ALL FIXTURES INDICATED TO HAVE 0-10V DIMMING.

ELECTRICAL IDENTIFICATION

- PROVIDE ELECTRICAL IDENTIFICATION PRODUCTS FOR BURIED ELECTRICAL LINES, ARC-FLASH HAZARD LABELS (ANSI Z335.4), SOURCE OF SUPPLY LABELS, AVAILABLE FAULT CURRENT LABELS AND EMERGENCY OPERATING SIGNS TO EQUIPMENT INSTALLED AS PART OF THIS PROJECT.
- PROVIDE NYLON TYPE COVERPLATES THAT MATCH DEVICES. PROVIDE METAL COVERS FOR ALL DEVICES IN UNFINISHED SPACES.
- PROVIDE LABELS ON COVERPLATES INDICATING SOURCE OF POWER (I.E. PANEL - CIRCUIT #).

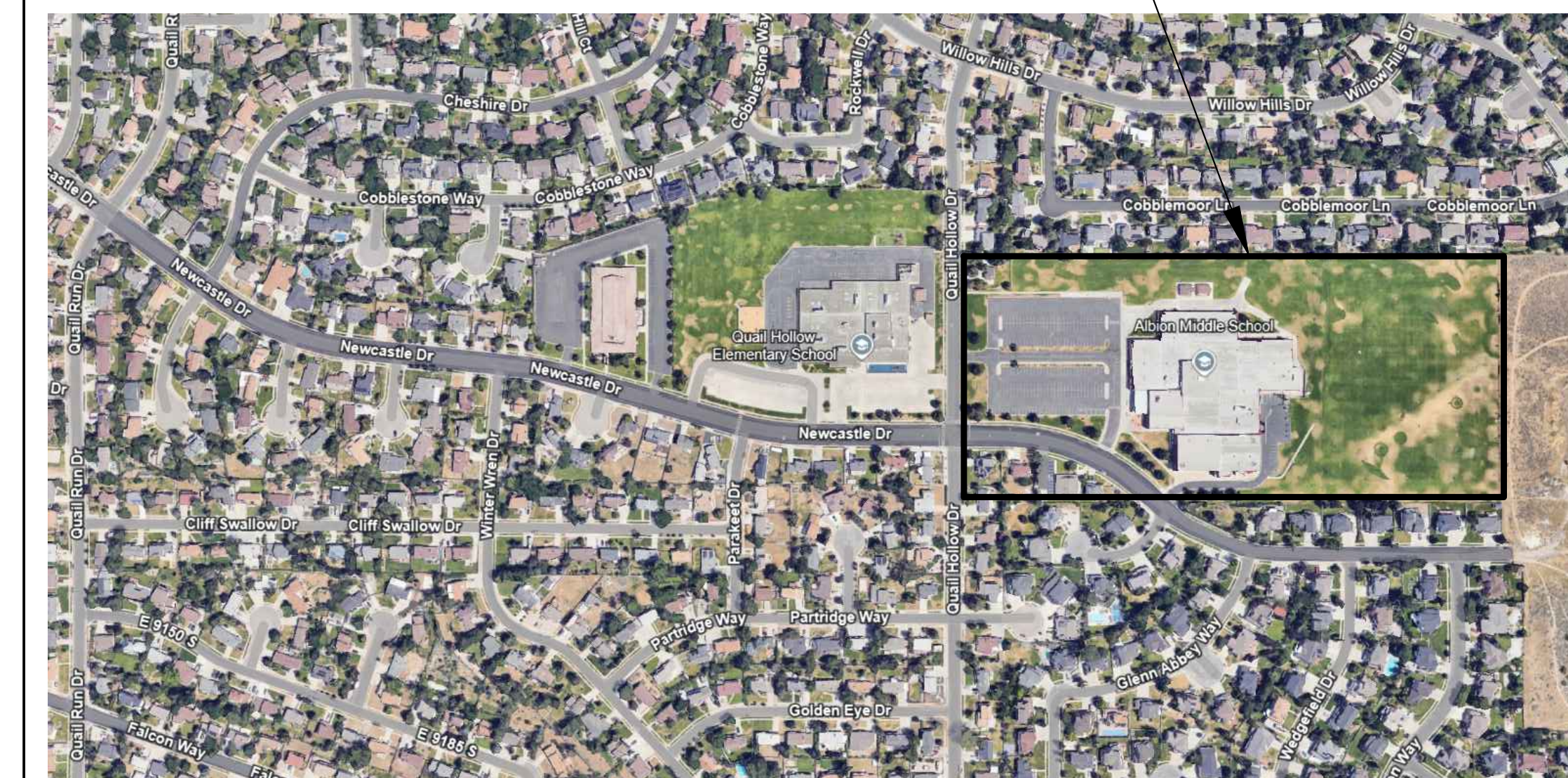
TELECOMMUNICATIONS (RACEWAY ONLY) - REFER TO SPECIFICATION SECTION 271500

FIRE ALARM AND DETECTIONS SYSTEMS

- PROVIDE UPDATES AND EXPANSION TO THE EXISTING HONEYWELL FCI E3 SUPERVISED FIRE ALARM SYSTEM WITH ALL APPLICABLE PROVISIONS OF THE CURRENT NFPA 72, NATIONAL FIRE ALARM CODE, FCI INTERNATIONAL FIRE CODE AND SHALL MEET ALL REQUIREMENTS OF THE LOCAL AUTHORITY HAVING JURISDICTION. PROVIDE A MINIMUM OF #14 AWG COPPER WIRING IN 3/4" CONDUIT. FIRE ALARM MC ALLOWED IF CURRENTLY USED ON-SITE. OTHERWISE, MC CABLING NOT ALLOWED.
- REFER TO E001 FOR MORE INFORMATION.

VICINITY MAP

PROJECT SITE
2755 Newcastle Drive
Sandy, Utah 84093



Sandy, Utah

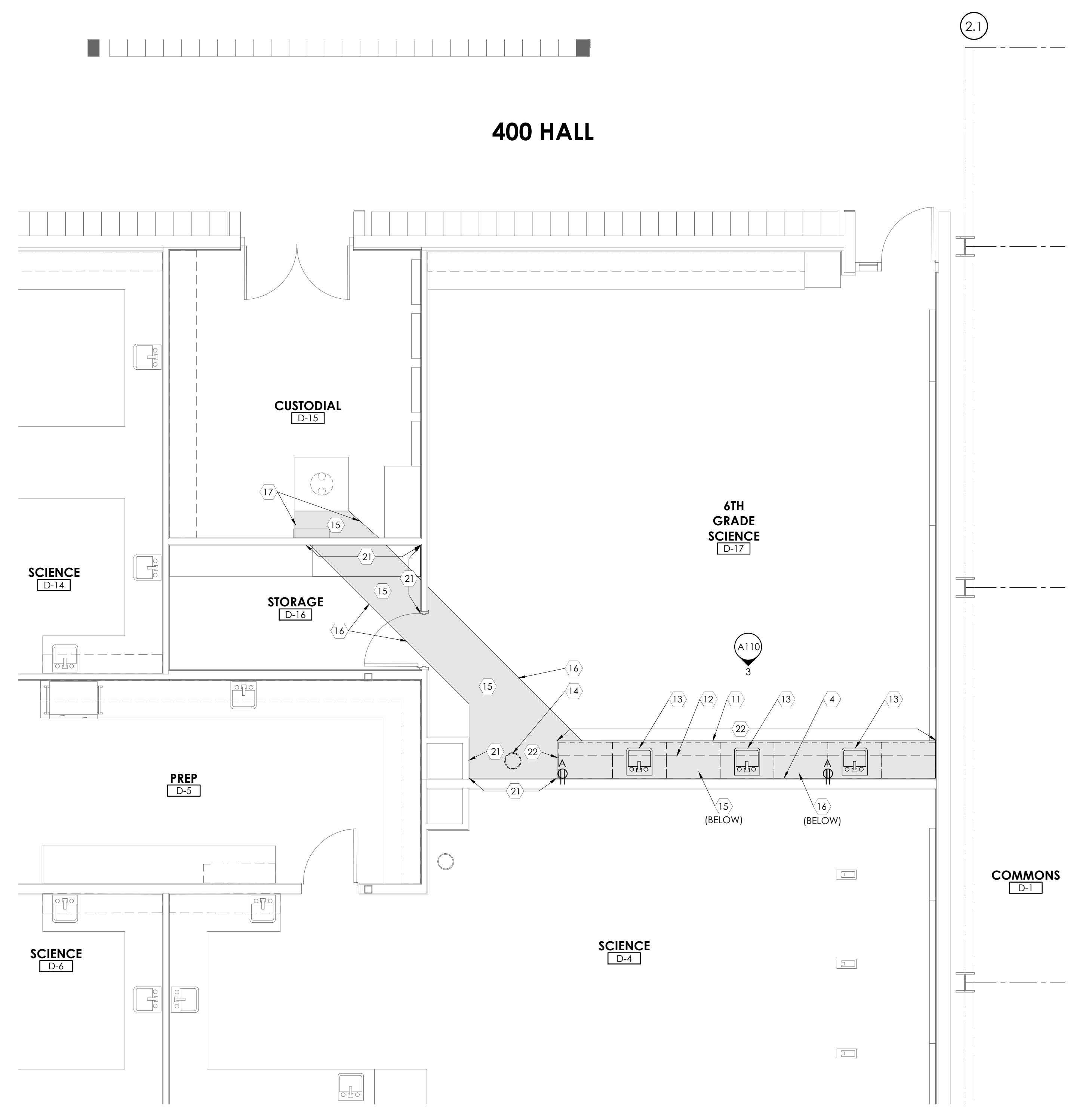
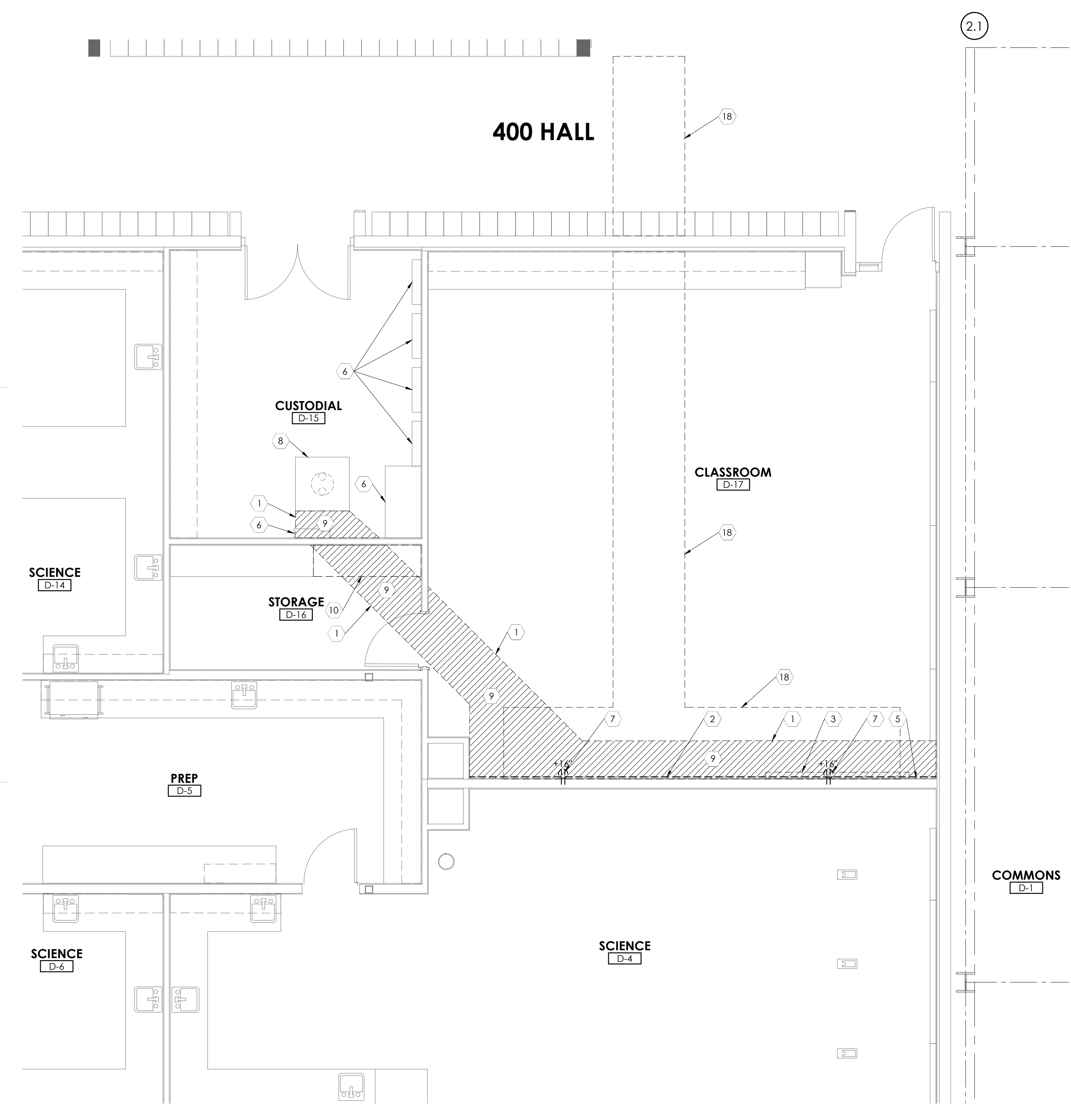
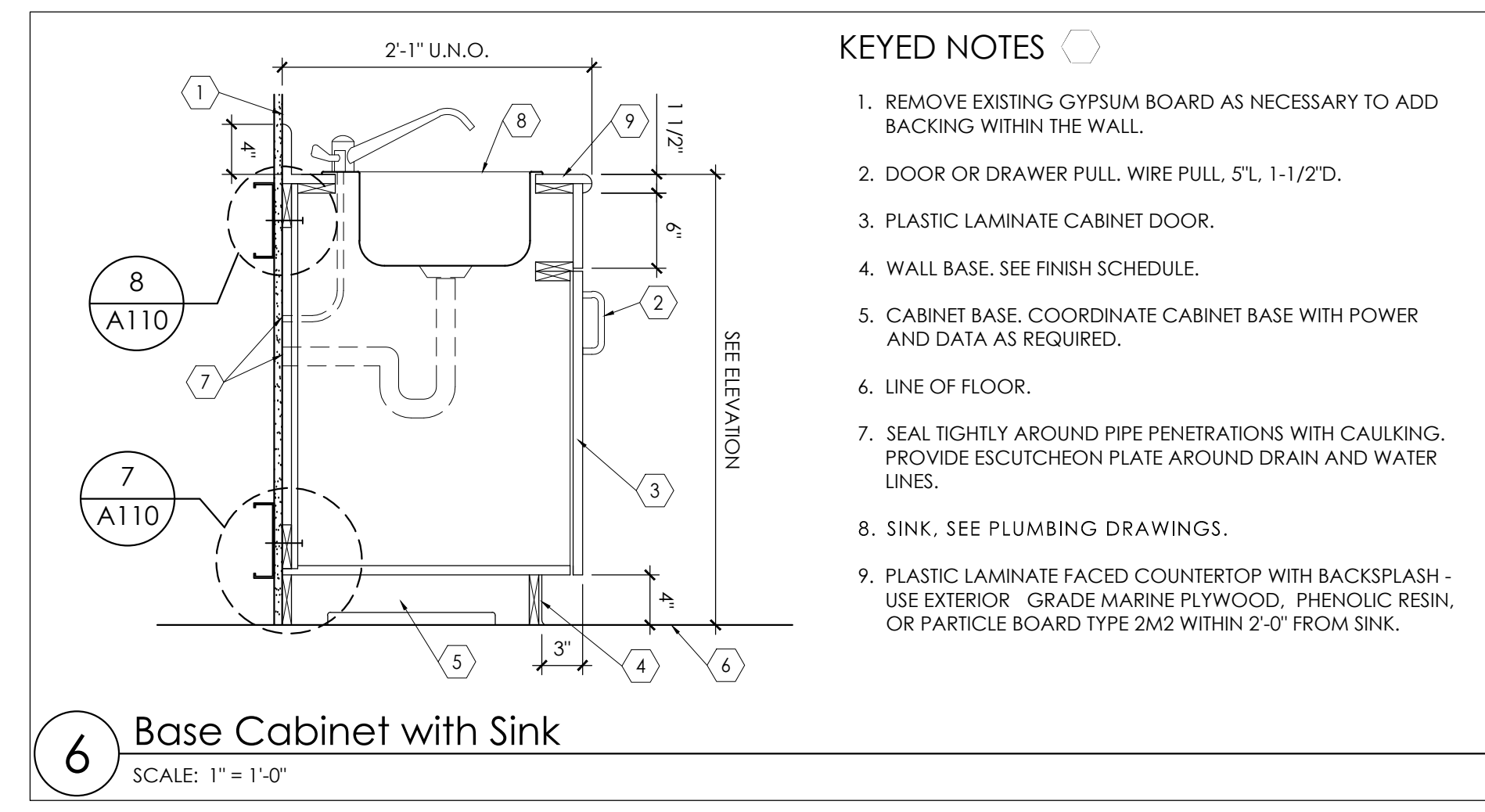
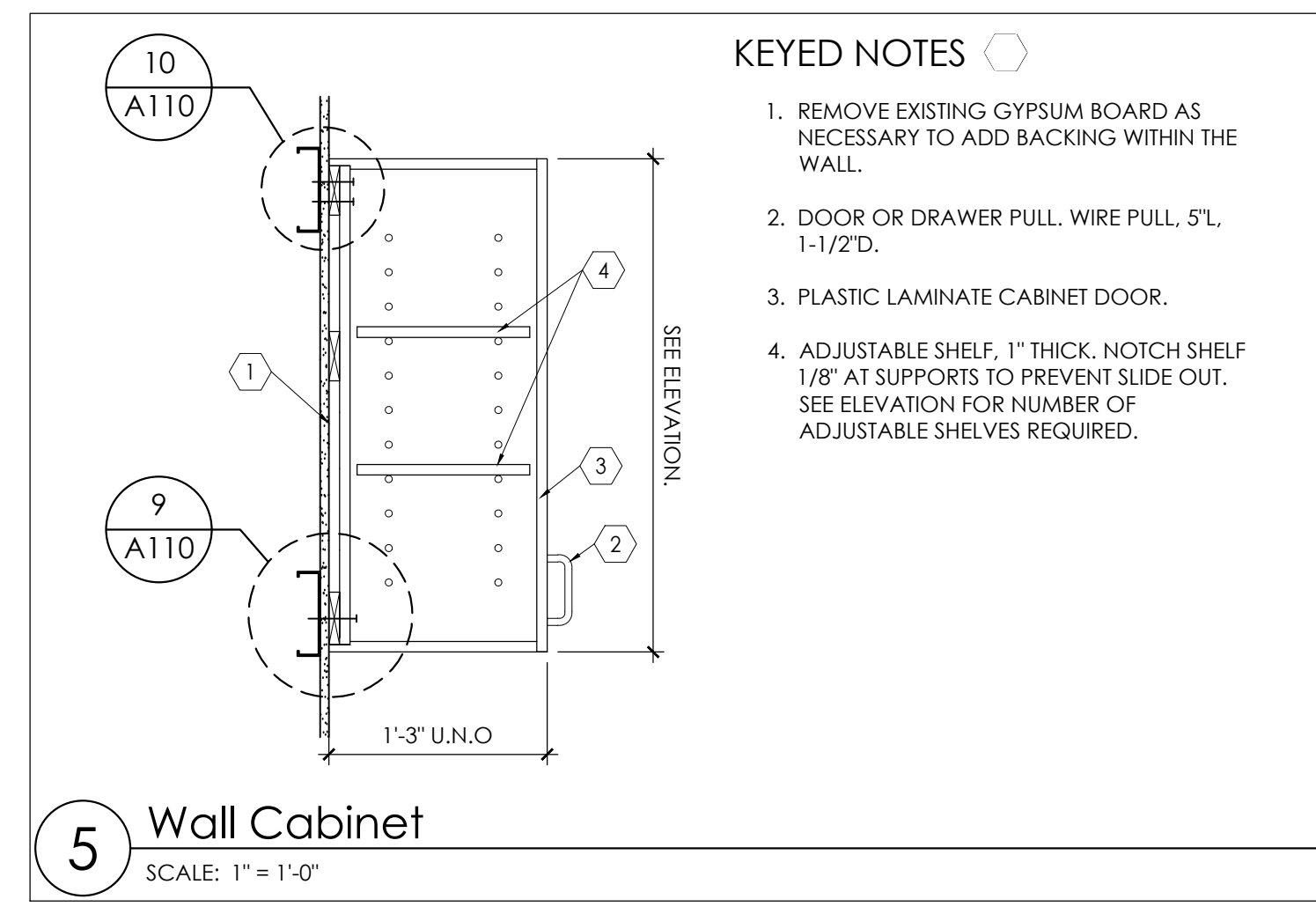
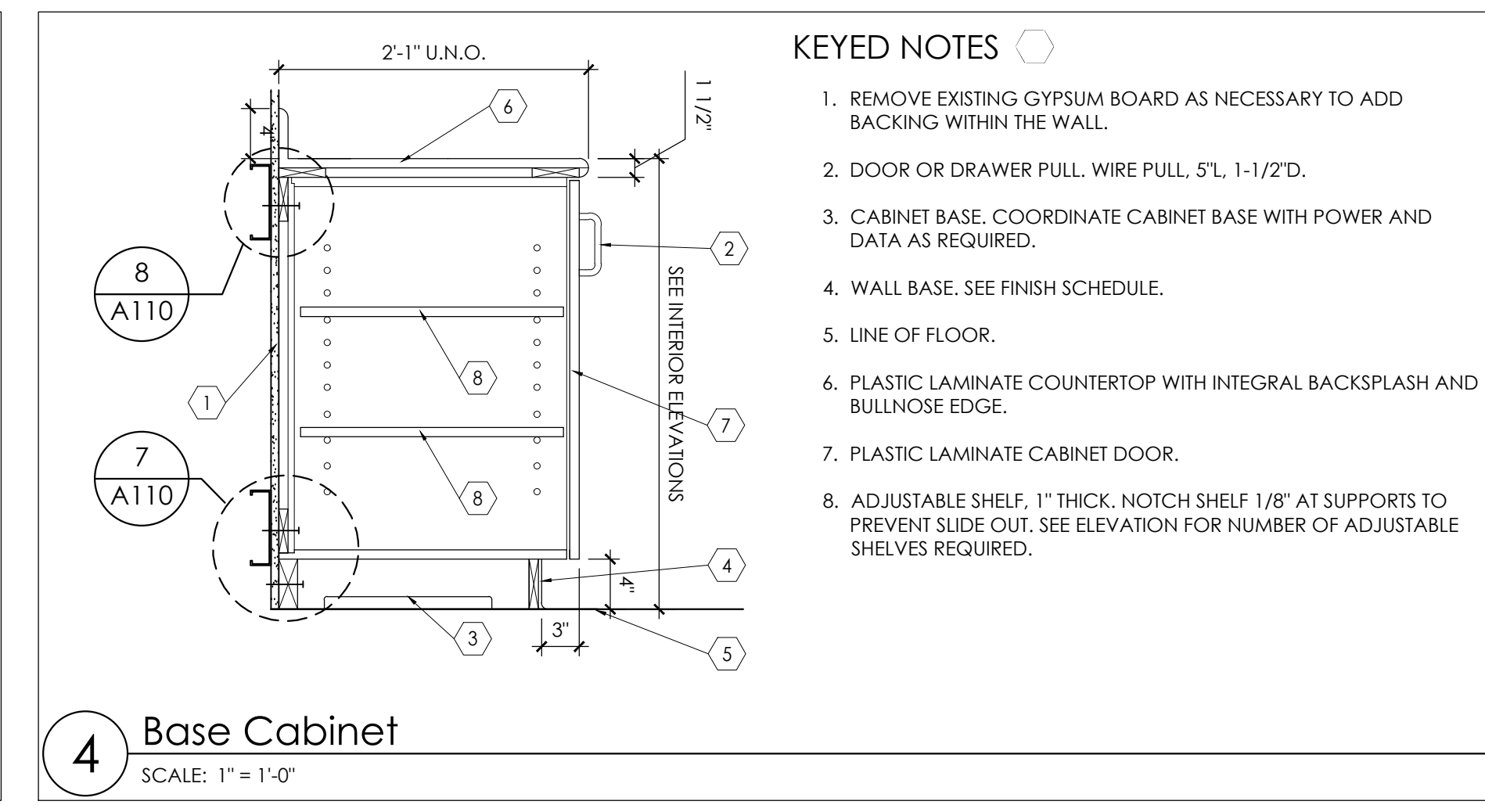
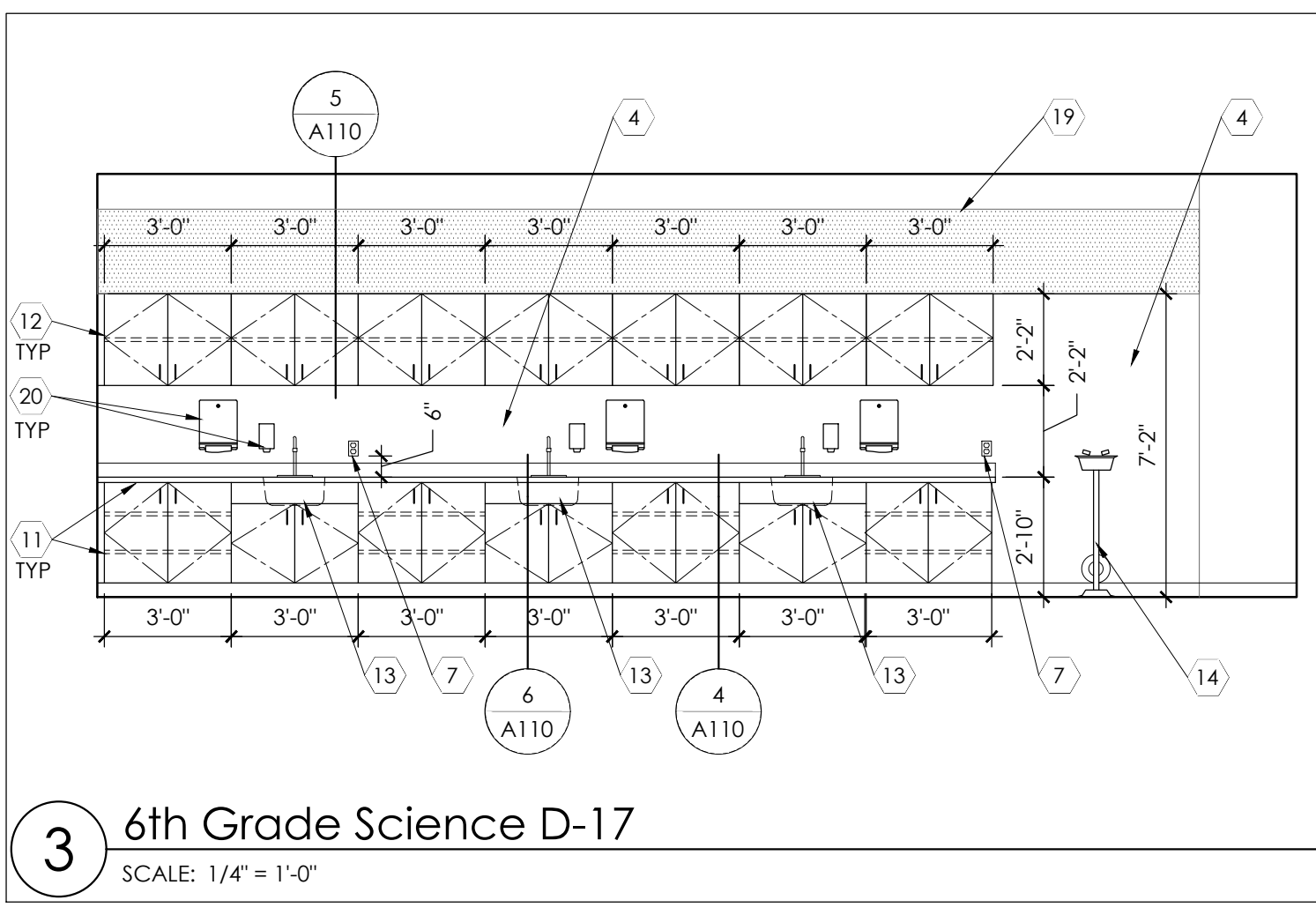
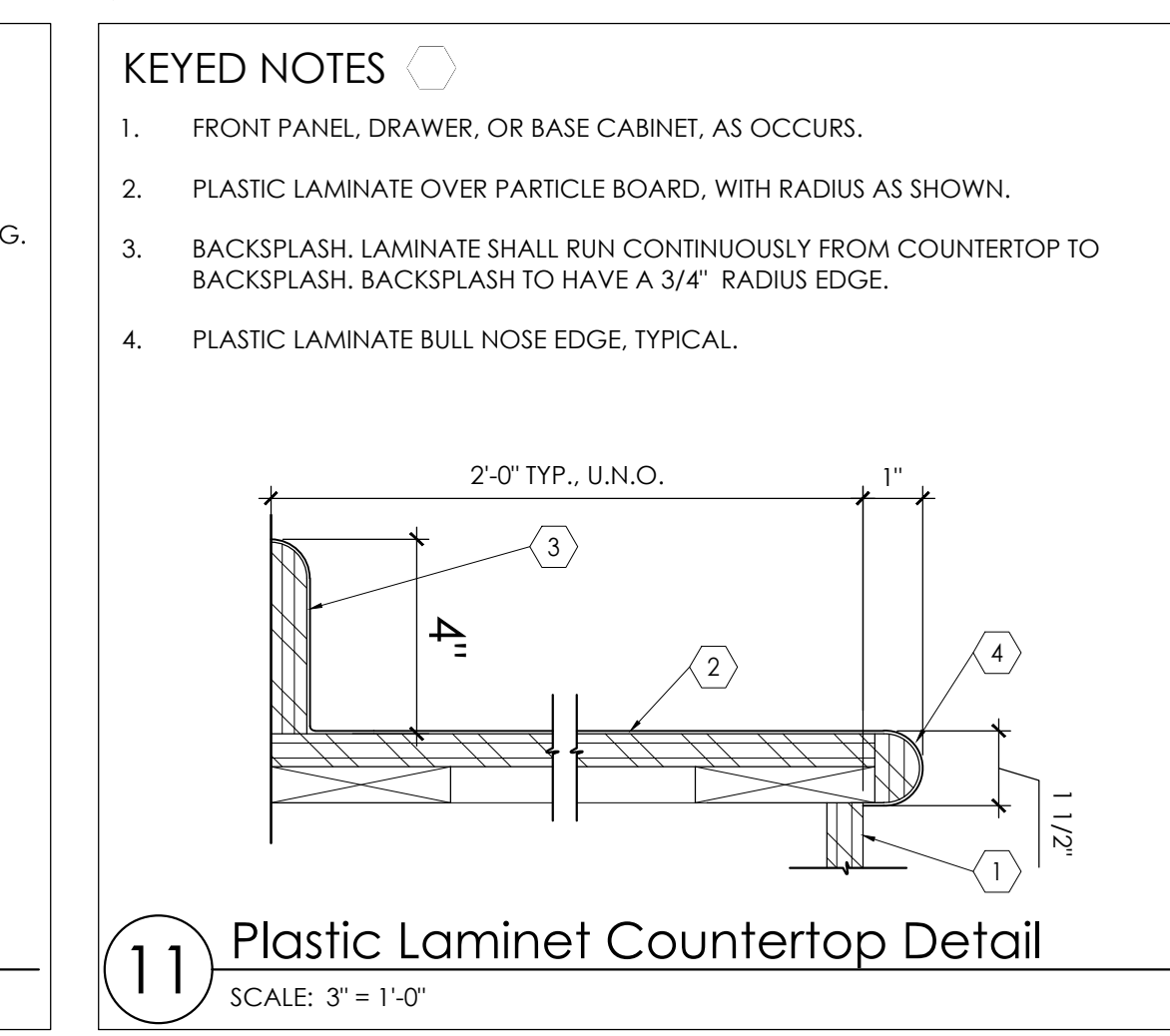
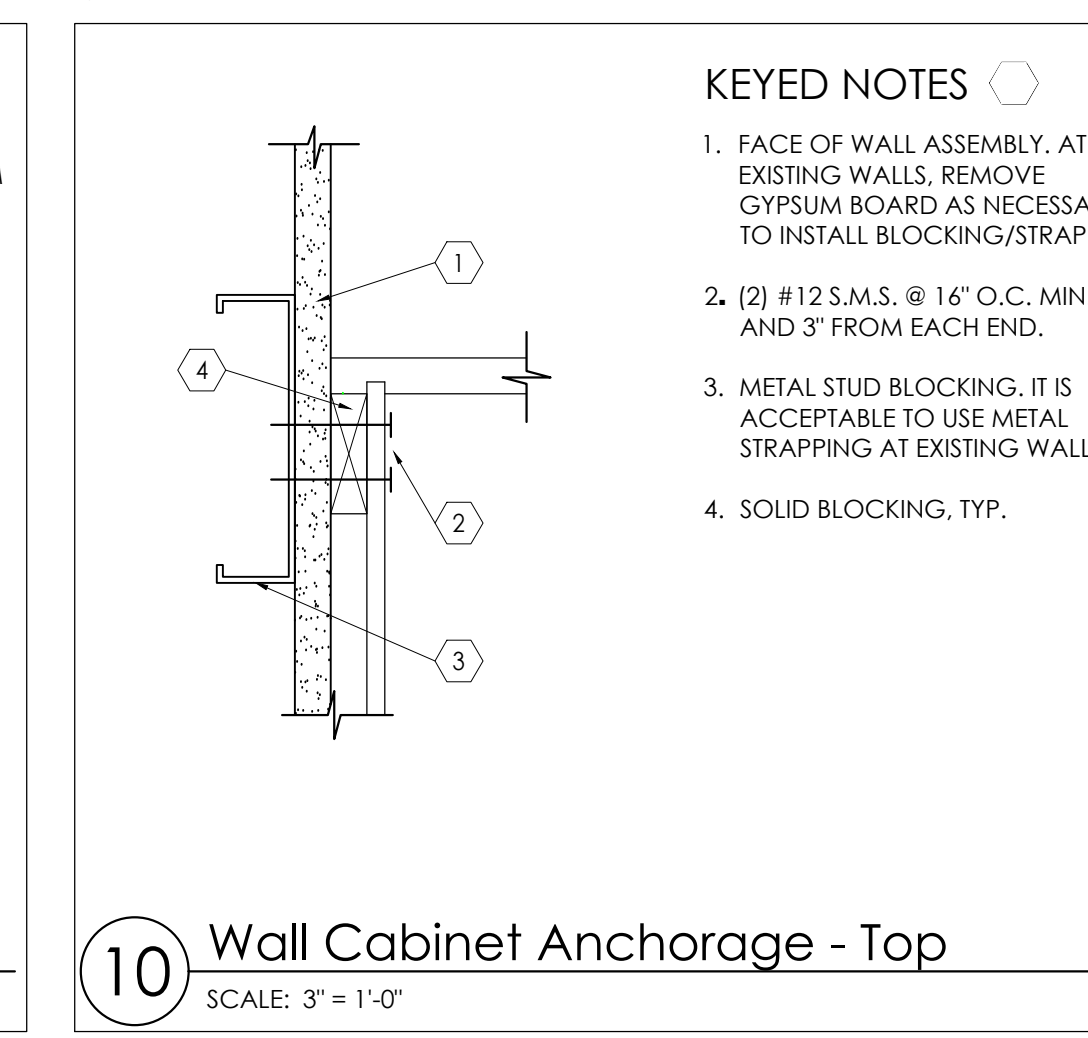
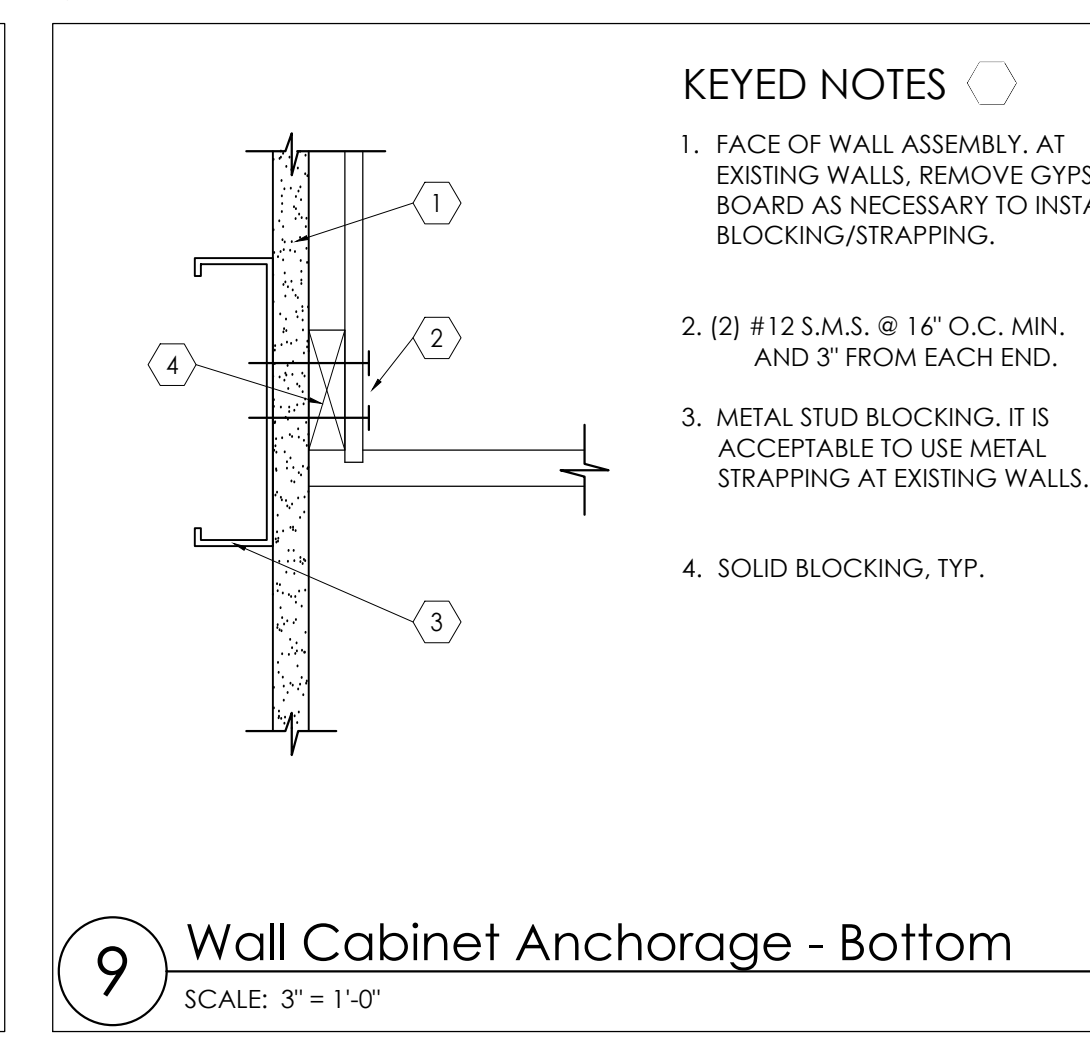
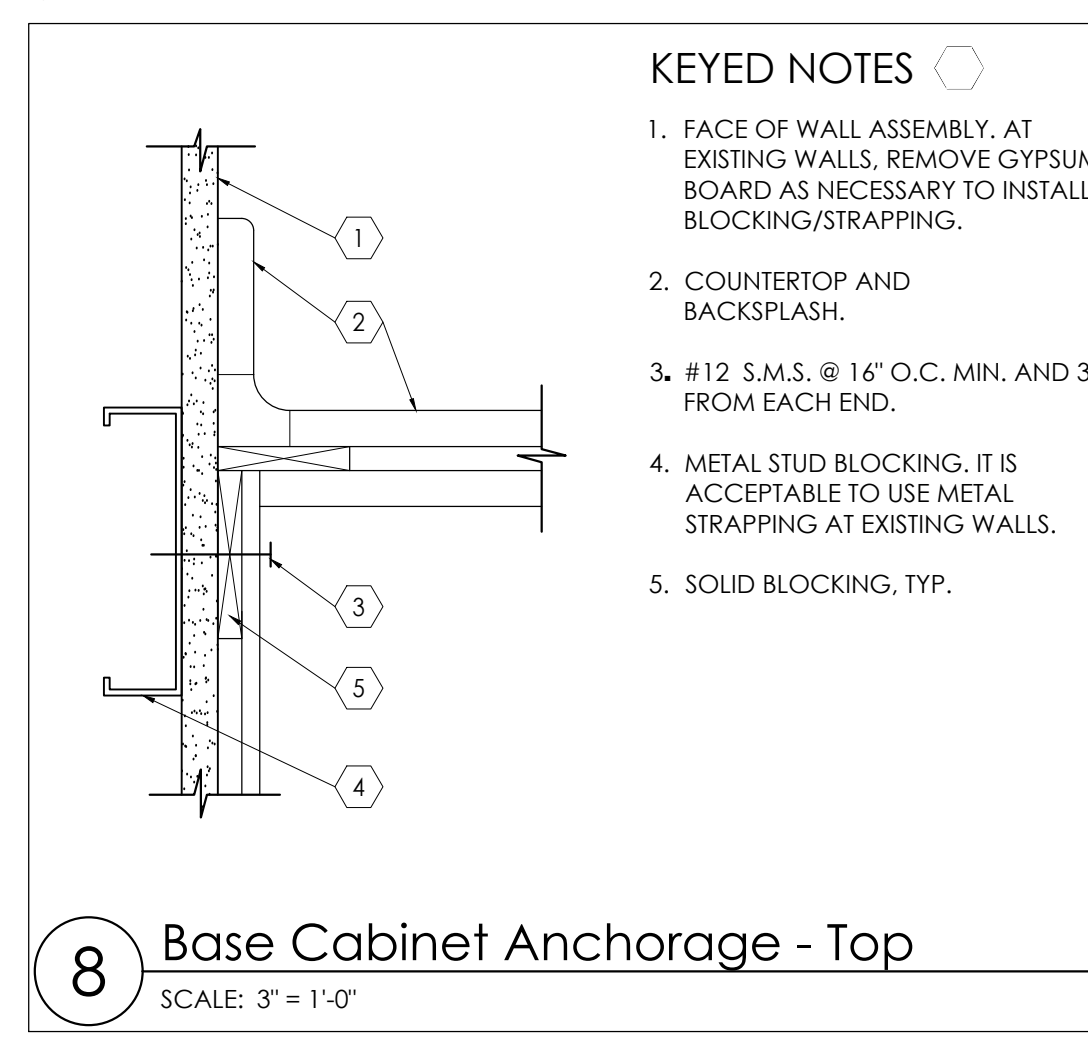
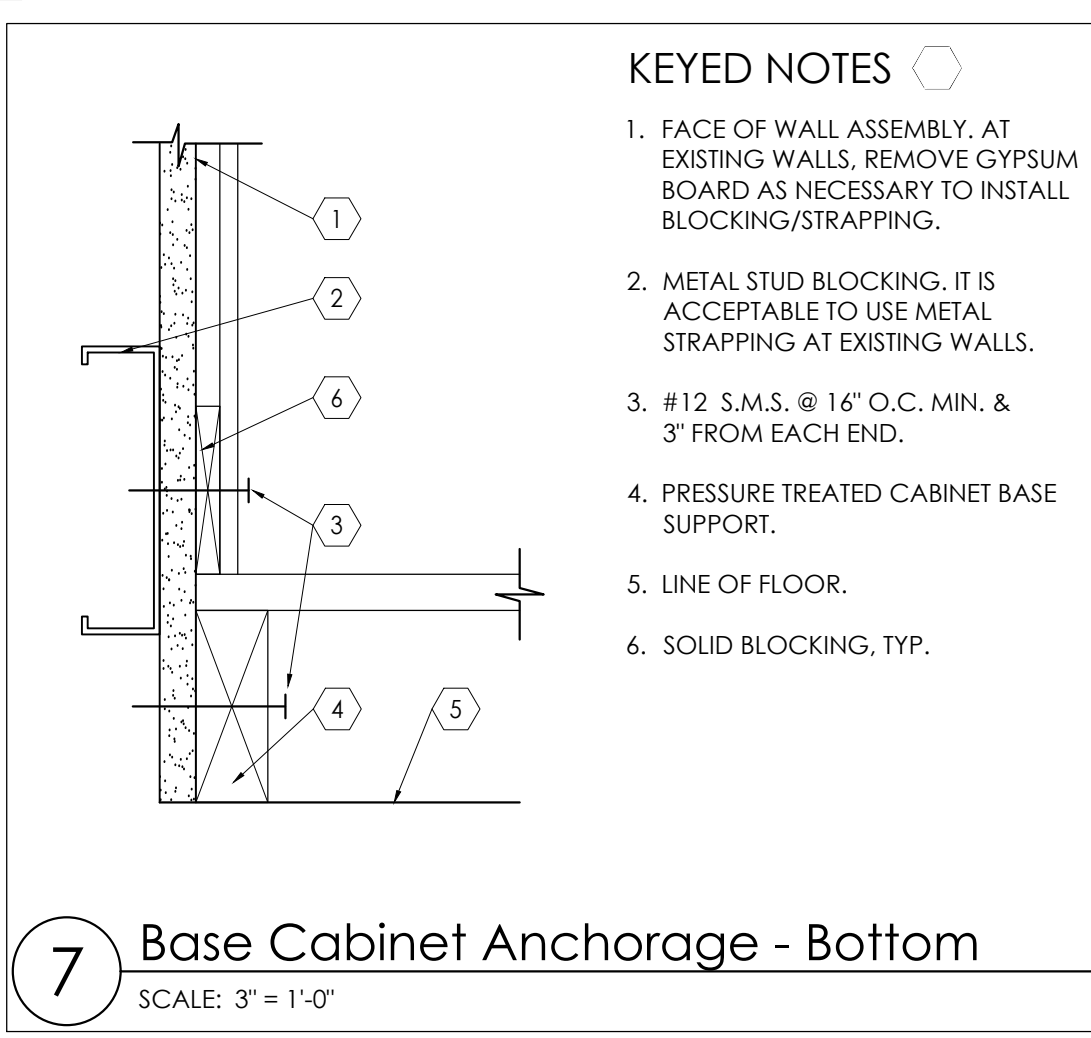
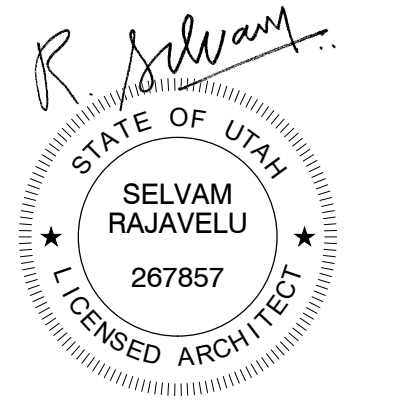
Canyons School District
Albion Middle School
Science Classroom Remodel

2755 Newcastle Drive
Sandy, UT 84093

NJRA Project # 24712.00
Bid Set Oct 22, 2024

Cover Sheet

G001



KEYED NOTES THESE KEYED NOTES APPLY TO DETAILS 1, 2, & 3. THIS SHEET.

- REMOVE EXISTING FLOOR COVERING AT NEW BASE CABINERY AND FOR UNDERGROUND PLUMBING WORK. VERIFY EXACT DIMENSIONS OF NEW CABINERY AND PLUMBING PRIOR TO REMOVAL. IF POSSIBLE, PULL UP BROADLOOM CARPETING RATHER THAN CUTTING OUT. FOR EASE OF RE-INSTALLATION.
- REMOVE CARPET WALL BASE AND SALVAGE FOR REINSTALLATION.
- WHITEBOARD TO BE REMOVED BY SCHOOL DISTRICT.
- WALL TO BE PATCHED AND PAINTED BY SCHOOL DISTRICT AFTER ALL PLUMBING, MILLWORK, AND CONCRETE WORK IS COMPLETE. THIS WORK IS NIC FOR THE CONTRACTOR.
- AUDIOVISUAL WALL CONTROLS TO REMAIN.
- ELECTRICAL PANELS, EQUIPMENT, ETC. TO REMAIN.
- REMOVE EXISTING ELECTRICAL DEVICE AND REINSTALL ABOVE NEW COUNTERTOP AND BACKSPLASH. COORDINATE WORK WITH GENERAL ELECTRICAL INSTRUCTIONS ON SHEET G-001.
- EXISTING ACID NEUTRALIZATION TANK AND CONCRETE VAULT. BELOW SLAB. SAWCUT AND REMOVE CONCRETE FLOOR SLAB IN THIS APPROXIMATE AREA FOR BELOW-GRADE PLUMBING. COORDINATE WITH PLUMBING PLANS AND EXISTING CONDITIONS FOR EXTENT OF WORK.
- CAREFULLY REMOVE BUILT-IN BOOKSHELVES (MILLWORK) TEMPORARILY FOR PLUMBING WORK. REINSTALL MILLWORK IN THE SAME LOCATION.
- NEW MILLWORK: PLASTIC LAMINATE BASE CABINETS AND PLASTIC LAMINATE COUNTERTOP WITH INTEGRAL BULLNOSE BACKSPLASH. THIS WORK IS TO BE INCLUDED IN BASE BID.
- NEW MILLWORK: PLASTIC LAMINATE UPPER CABINETS. THIS WORK IS TO BE BID AS 'ALTERNATE #1'.
- NEW SINK. SEE PLUMBING DRAWINGS.
- NEW EMERGENCY EYEWASH. SEE PLUMBING DRAWINGS.
- NEW CONCRETE FLOOR SLAB. 4" THICK OVER 4" DRAINAGE GRAVEL. DOWEL NEW CONCRETE INTO EXISTING WITH #2 REBAR AT 12" O.C.
- REINSTALL EXISTING CARPET FLOOR COVERING IN THIS AREA. DO NOT INSTALL CARPET BELOW NEW BASE CABINETS.
- INSTALL NEW FLOOR COVERING (VCT) TO MATCH EXISTING.
- CAREFULLY REMOVE AND REPLACE EXISTING LAY-IN CEILING TILES FOR OVERHEAD PLUMBING WORK. CEILING GRID WILL REMAIN AND CONTRACTOR SHALL PLAN ABOVE-CEILING WORK ACCORDINGLY.
- EXISTING TACK BOARD TO REMAIN.
- PAPER TOWEL AND SOAP DISPENSERS, OFOL.
- REINSTALL EXISTING CARPET BASE.
- NEW RUBBER WALL BASE.

FINISHES

PLASTIC LAMINATE (BASE CABINETS):
PANOLAM (PIONITE), SG228 SLATE, CHEMGUARD HPL PRODUCT TYPE, BLACK PHENOLIC CORES

PLASTIC LAMINATE (COUNTERTOP, BACKSPLASH, 'SIDESPLASH'):
WILSONART, 4877-38 GREY MESH

PLASTIC LAMINATE (UPPER CABINETS - ALT #1)
WILSONART, 1573-60 FROSTY WHITE

BROADLOOM CARPET
BID SHALL INCLUDE PULLING UP EXISTING CARPETTING AND ADHERING BACK TO FLOOR SLAB WITH ADHESIVE (ADHESIVE PROVIDED BY CONTRACTOR). IF IT IS NECESSARY TO REPLACE CARPET OR CARPET BASE, PRODUCT IS AS FOLLOWS:
LEES, FACILITY IV, 4138 STARLIGHT.

RUBBER BASE
JOHNSONITE, #44 DARK BROWN, 4" HIGH, STRAIGHT PROFILE (NOT COVERED)

Canyons School District
Albion Middle School
Science Classroom Remodel

2755 Newcastle Drive
Sandy, UT 84093

NJRA Project # 24712.00
Bid Set Oct 22, 2024

Floor Plans,
Elevations, &
Details

A110

PLUMBING FIXTURE SCHEDULE						NOTES
ID	FIXTURE	CW (IN)	HW (IN)	W (IN)	V (IN)	
EW-1	EMERGENCY EYEWASH	1	1	1 1/2	1 1/2	EYE WASH (FLOOR MOUNTED); GUARDIAN G1704 EYEWASH - 4 GS PLUS SPRAY HEADS, G3600 THERMOSTATIC MIXING VALVE IN LOCKING, IN-WALL MOUNTED, STAINLESS STEEL CABINET WITH INTEGRAL COLD WATER BY-PASS, AND DUAL IN-LINE CHECK VALVES IN HOT AND COLD SUPPLIES. MOUNT MIXING VALVE IN CABINET IN WALL BEHIND SAFETY STATION. CONNECT OUTLET OF MIXING VALVE TO INLET OF SAFETY STATION. SET MIXING VALVE TO PROVIDE 90-DEGREE TEMPERED WATER TO THE EYEWASH.
S-1	SINK	1/2	1/2	2	1 1/2	LAB SINK (COUNTER MOUNTED, SINGLE COMPARTMENT, STAINLESS STEEL); JUST SLX-2019-A-GR 16"x14"x10-1/2" DEEP, 18-GAUGE, TYPE 316 STAINLESS STEEL, COUNTER MOUNTED SINK WITH SINGLE CENTER HOLE DRILLING. CHICAGO 930-VR369CP DECK MOUNTED VANDAL RESISTANT LABORATORY FAUCET FOR SINGLE HOLD DRILLING WITH RIGID VACUUM BREAKER SPOUT, ANTI-ROTATIONAL DECK PIN, LEVER HANDLES AND E7 SERRATED NOZZLE OUTLET. FLEXIBLE STAINLESS STEEL SUPPLIES WITH LOOSE KEY ANGLE STOPS. JUST J-35-31 STAINLESS STEEL DRAIN WITH CUP STRAINER AND ORION POLYPROPYLENE RNL 1 1/2" X 12" TAILPIECE WITH UTP 1 1/2" P-TRAP.

1. ALL UNDER GROUND WASTE AND VENT SHALL BE 2" OR GREATER PER DRAWINGS.

GENERAL NOTES

- FIELD VERIFY LOCATION OF EXISTING UTILITIES THAT WILL BE USED FOR CONNECTION OF NEW PIPING.
- SEE ARCHITECTURAL PLANS FOR PRECISE LOCATIONS OF PLUMBING FIXTURES.

KEYED NOTES

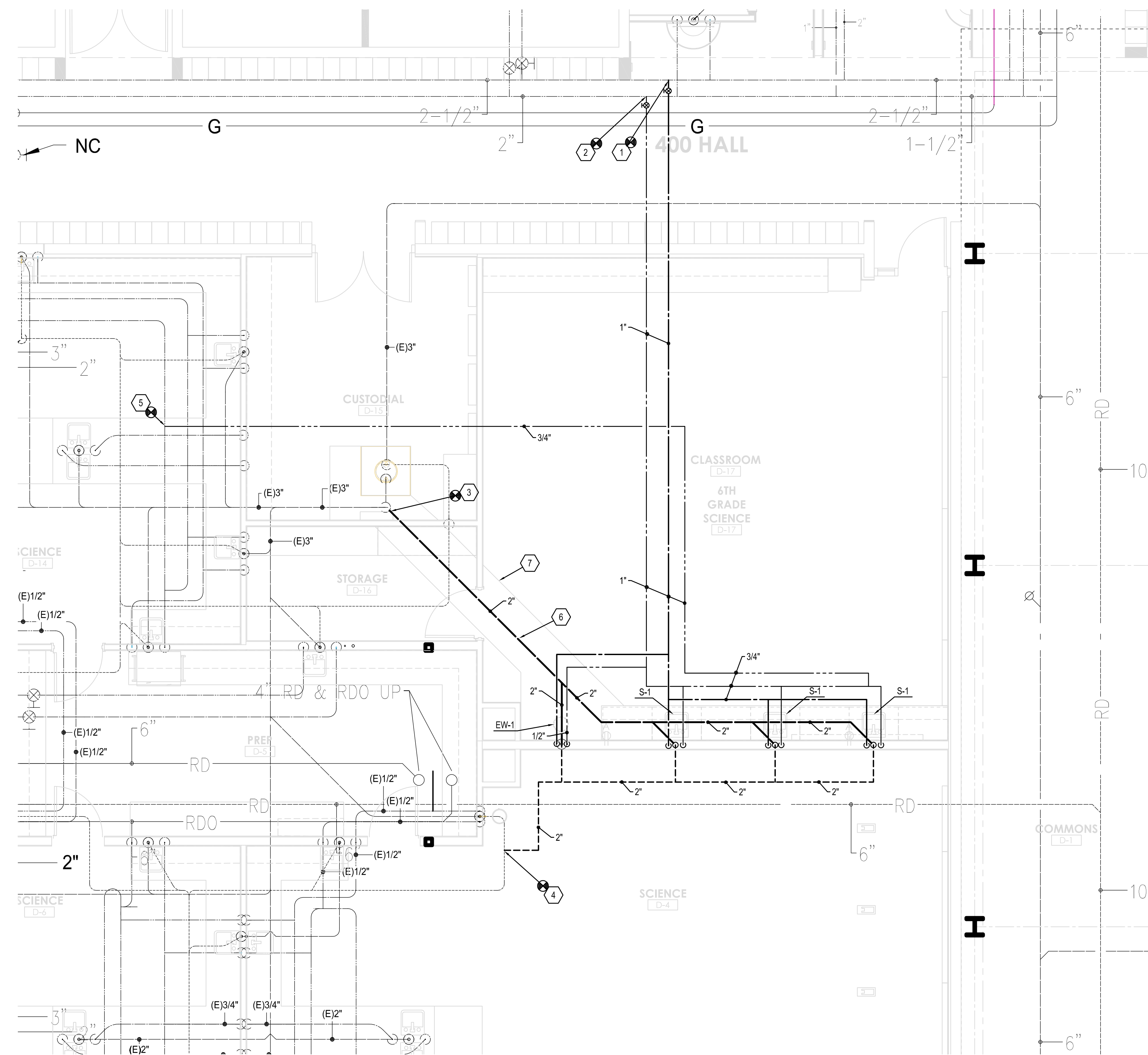
- CONNECT NEW DOMESTIC COLD WATER LINE TO EXISTING DOMESTIC COLD WATER LINE LOCATED IN THE CEILING CAVITY.
- CONNECT NEW DOMESTIC HOT WATER LINE TO EXISTING DOMESTIC HOT WATER LINE LOCATED IN CEILING CAVITY.
- CONNECT NEW SANITARY SEWER LINE TO EXISTING SANITARY SEWER LINE UPSTREAM OF NEUTRALIZATION TANK.
- CONNECT NEW SANITARY VENT LINE TO EXISTING SANITARY VENT LINE LOCATED IN CEILING CAVITY.
- CONNECT DOMESTIC HOT WATER RECIRCULATION LINE TO EXISTING CIRCULATION PIPING LOCATED IN CEILING CAVITY.
- INSTALL NEW ACID WASTE SANITARY SEWER LINE IN EXCAVATED TRENCH - SEE ARCHITECTURAL PLAN.
- SAW-CUT FLOOR AREA - SEE ARCHITECTURAL DEMOLITION PLANS.



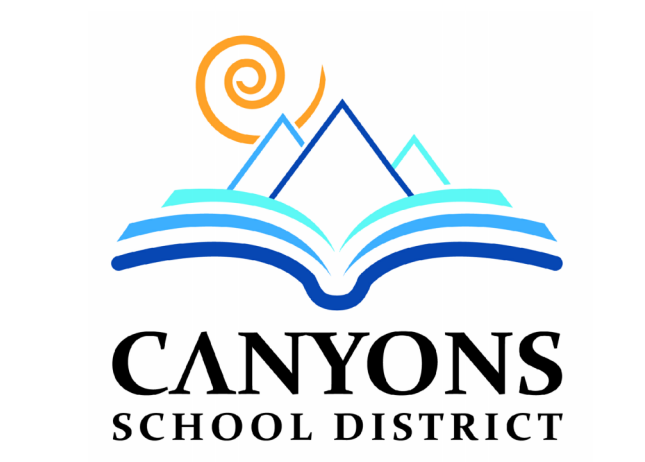
NJRA Architects, Inc.
5223 S. Ascension Way, Ste. 350
Murray, Utah 84123
801.364.9259
www.njraarchitects.com



PLUMBING SYMBOLS AND ABBREVIATIONS		
LINE TYPE	ABBREV.	DESCRIPTION
-----	CW	COLD WATER
-----	HW	HOT WATER
-----	REC. HW	RECIRCULATING HOT WATER
----- G -----	G	GAS
----- V -----	V	VENT
----- o VTR -----	VTR	VENT THRU ROOF
-----	W	WASTE (BELOW GRADE)
-----	W	WASTE (ABOVE GRADE)
----- RD -----	RD	ROOF DRAIN
-----	PRV	PRESSURE REDUCING VALVE
-----		BUTTERFLY SHUTOFF VALVE 2 1/2" & LARGER. BALL VALVE 2" & SMALLER
-----		STRAINER W/BLOW DOWN VALVE
-----	WCD	WALL CLEANOUT
----- φ FCD -----	FCD	FLOOR CLEANOUT
----- φ CDTG -----	CDTG	CLEANOUT TO GRADE
----- AW -----	AW	ACID WASTE
----- SD -----	SD	STORM DRAIN
----- ECW -----	ECW	EXISTING COLD WATER
----- EW -----	EW	EXISTING WASTE
----- ERDD -----	ERDD	EXISTING ROOF DRAIN OVERFLOW
-----	RD RDO	ROOF DRAIN OR ROOF DRAIN OVERFLOW
----- RDO -----	RDO	ROOF DRAIN OVERFLOW
-----	FD	FLOOR DRAIN
-----	POC	POINT OF CONNECTION



1 NEW PLUMBING FLOOR PLAN: Science Classroom D-17
1/4" = 1'-0"



Canyons School District
Albion Middle School
Science Classroom Remodel

2755 Newcastle Drive
Sandy, UT 84093

NJRA Project # 24712.00
Bid Set Oct 22, 2024

Plumbing Floor Plans



151 East 5600 South
Murray, Utah 84107
O: (801) 530-3148
F: (801) 530-3150
www.vbfa.com
vbfa project #: 24073

P110